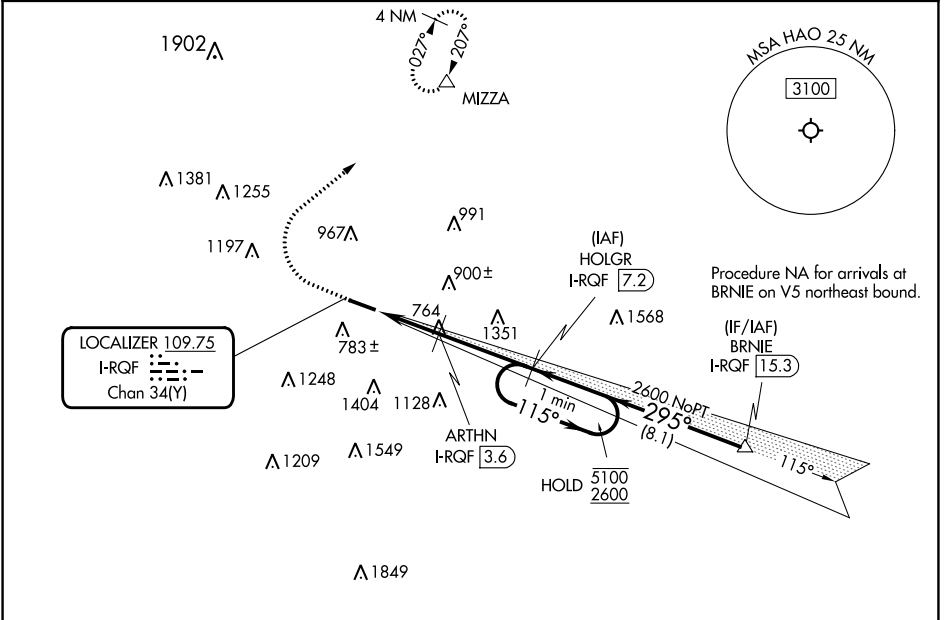


LOC/DME I-RQF <b>109.75</b> Chan <b>34 (Y)</b>	APP CRS <b>295°</b>	Rwy Idg TDZE Apt Elev <b>5500</b> <b>619</b> <b>632</b>
--	------------------------	--

**ILS or LOC RWY 29**  
BUTLER COUNTY RGNL/HOGAN FLD (HAO)

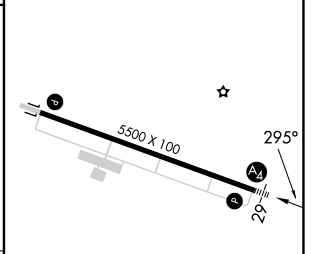
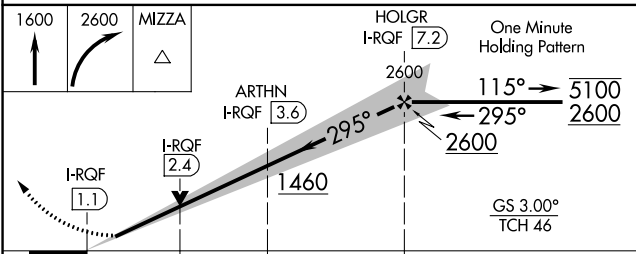
RNP APCH - GPS DME required.		MALS =	MISSED APPROACH: Climb to 1600 then climbing right turn to 2600 direct MIZZA and hold.
▼ Inop table does not apply to S-ILS 29.		⊙	
ASOS <b>121.425</b>	CINCINNATI APP CON <b>121.0 254.25</b>	CLNC DEL <b>126.25</b>	UNICOM <b>123.05 (CTAF) 1</b>



EC-2, 30 NOV 2023 to 28 DEC 2023

EC-2, 30 NOV 2023 to 28 DEC 2023

ELEV 632	TDZE 619
----------	----------



CATEGORY	A	B	C	D
S-ILS 29		819-3/4	200 (200-3/4)	
S-LOC 29	1080-3/4	461 (500-3/4)	1080-1/8	461 (500-1/8)
Ⓢ CIRCLING	1280-1	648 (700-1)	1300-1 3/4 668 (700-1 3/4)	1760-3 1128 (1200-3)

FAC to MAP 6.1 NM					
Knots	60	90	120	150	180
Min:Sec	6:06	4:04	3:03	2:26	2:02