

LOC/DME I-FLD 108.3 Chan 20	APP CRS 002°	Rwy Idg TDZE 795 Apt Elev 808	5941
--	------------------------	---	-------------

LOC RWY 36

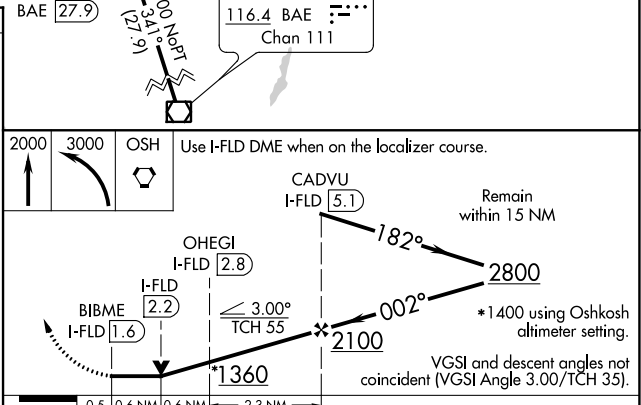
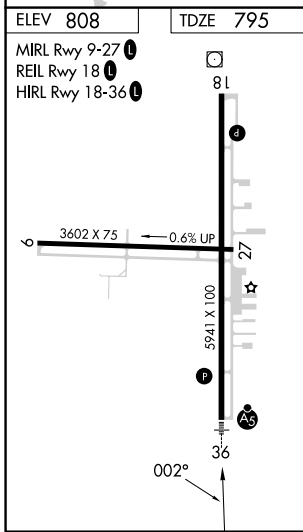
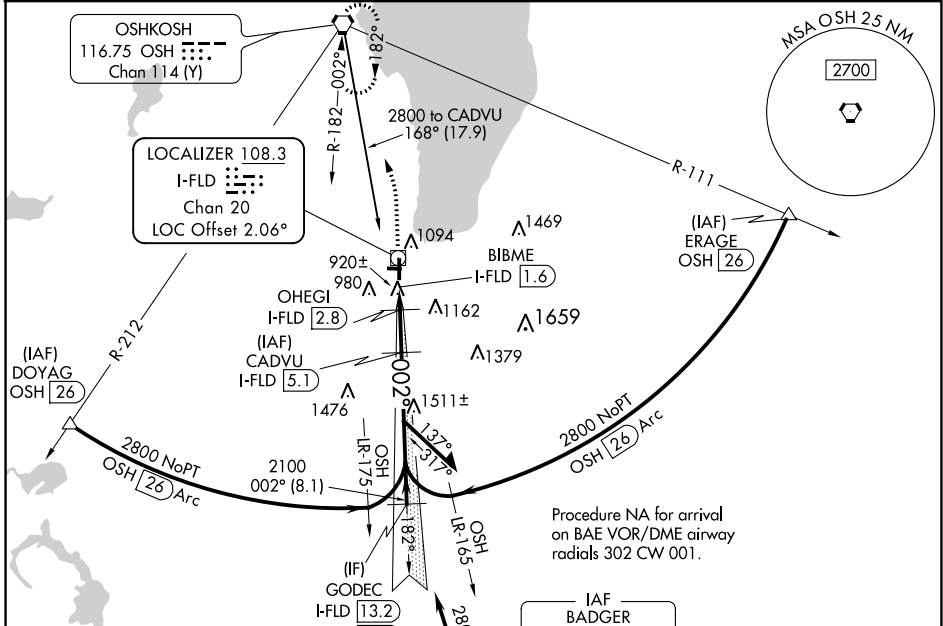
FOND DU LAC COUNTY (F.L.D)

DME required. Radar required for Procedure Entry at ERAGE.

W Circling Rwy 9, 27 NA at night. For inop ALS, increase S-LOC 36 Cat A/B visibility to 1 SM, and Cat C/D to 1 1/2 SM. When local altimeter setting not received, use Oshkosh altimeter setting: increase all MDA 40 feet and increase Circling Cat C/D visibility 1/2 SM. VDP NA when using Oshkosh altimeter setting. For inop ALS when using Oshkosh altimeter setting, increase S-LOC 36 Cat A/B visibility to 1 SM.

MALSR MISSED APPROACH Climb to 2000 then climbing left turn to 3000 direct OSH VORTAC and hold.

ASOS 134.0	MILWAUKEE APP CON 127.0 263.075	UNICOM 123.05 (CTAF) 0
----------------------	---	----------------------------------



CATEGORY	A	B	C	D
S-LOC 36	1180-3/4 385 (400-3/4)			
C CIRCLING	1400-1	592 (600-1)	1520-2 712 (800-2)	1520-2 1/4 712 (800-2 1/4)

EC-3, 30 NOV 2023 to 28 DEC 2023

EC-3, 30 NOV 2023 to 28 DEC 2023