

WAAS CH <b>99638</b> <b>W18A</b>	APP CRS <b>184°</b>	Rwy ldg TDZE Apt Elev	<b>5941</b> <b>791</b> <b>808</b>
----------------------------------------	------------------------	-----------------------------	-----------------------------------------

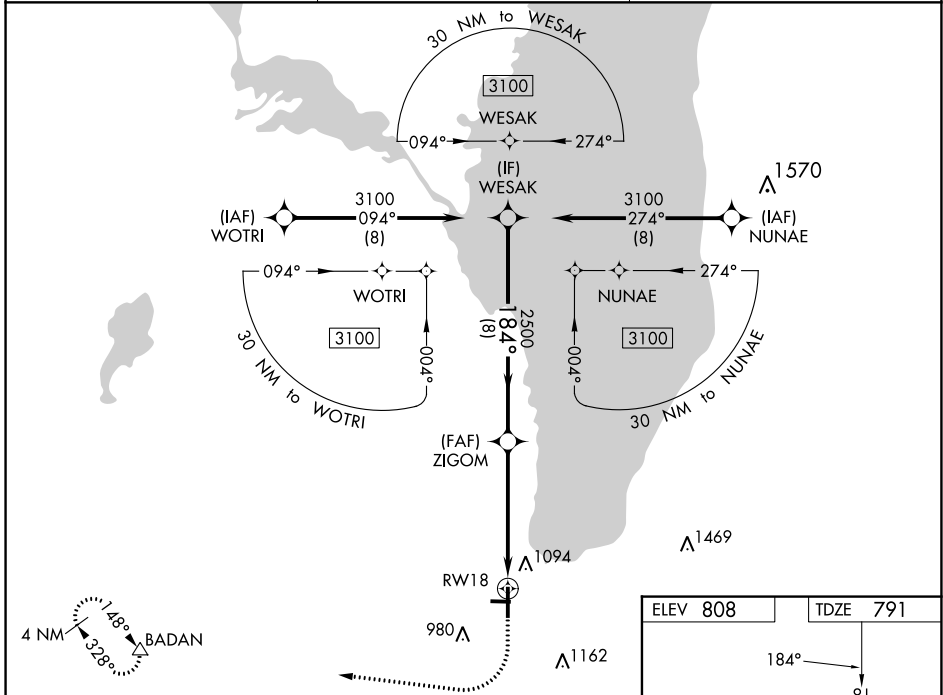
# RNAV (GPS) RWY 18

FOND DU LAC COUNTY (F.L.D)

**⚠** Night landing: Rwy 9, 27 NA. Baro-VNAV NA when using Oshkosh altimeter setting. For uncompensated Baro-VNAV systems, LNAV/VNAV NA below -21°C (-5°F) or above 54°C (130°F). DME/DME RNP-0.3 NA. When local altimeter setting not received, use Oshkosh altimeter setting; increase LPV DA to 1072 feet and LNAV/VNAV DA to 1314 feet and all MDA 60 feet; increase LPV visibility all Cats, LNAV/VNAV visibility all Cats and LNAV Cat C/D visibility 1/8 mile; increase Circling Cat D visibility 1/4 mile.

**MISSED APPROACH:**  
Climb to 1300 then climbing right turn 3000 direct BADAN and hold.

ASOS <b>134.0</b>	MILWAUKEE APP CON <b>127.0 263.075</b>	UNICOM <b>123.05 (CTAF) 0</b>
----------------------	-------------------------------------------	----------------------------------

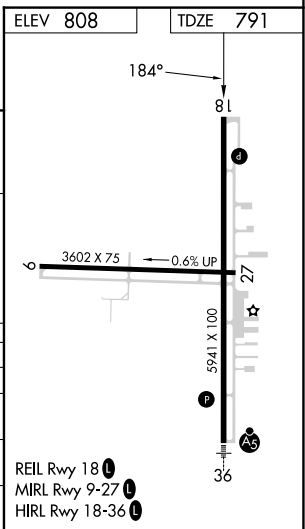


EC-3, 30 NOV 2023 to 28 DEC 2023

EC-3, 30 NOV 2023 to 28 DEC 2023

VGSI and RNAV glidepath not coincident (VGSI Angle 3.00/TCH 35).

	WESAK	ZIGOM	RWY 18	BADAN
	3100	2500	980	1300 / 3000
	GP 3.00° TCH 45			
	184°			
	8 NM	3.7 NM	1.6 NM	
CATEGORY	A	B	C	D
LPV DA		1041-7/8	250 (300-7/8)	
LNAV/VNAV DA		1283-13/4	492 (500-13/4)	
LNAV MDA	1320-1	529 (600-1)	1320-1 1/2	529 (600-1 1/2)
<b>C</b> CIRCLING	1400-1	592 (600-1)	1520-2 712 (800-2)	1520-2 1/4 712 (800-2 1/4)



REIL Rwy 18  
MIRL Rwy 9-27  
HIRL Rwy 18-36