

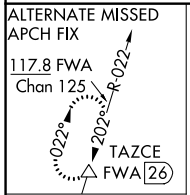
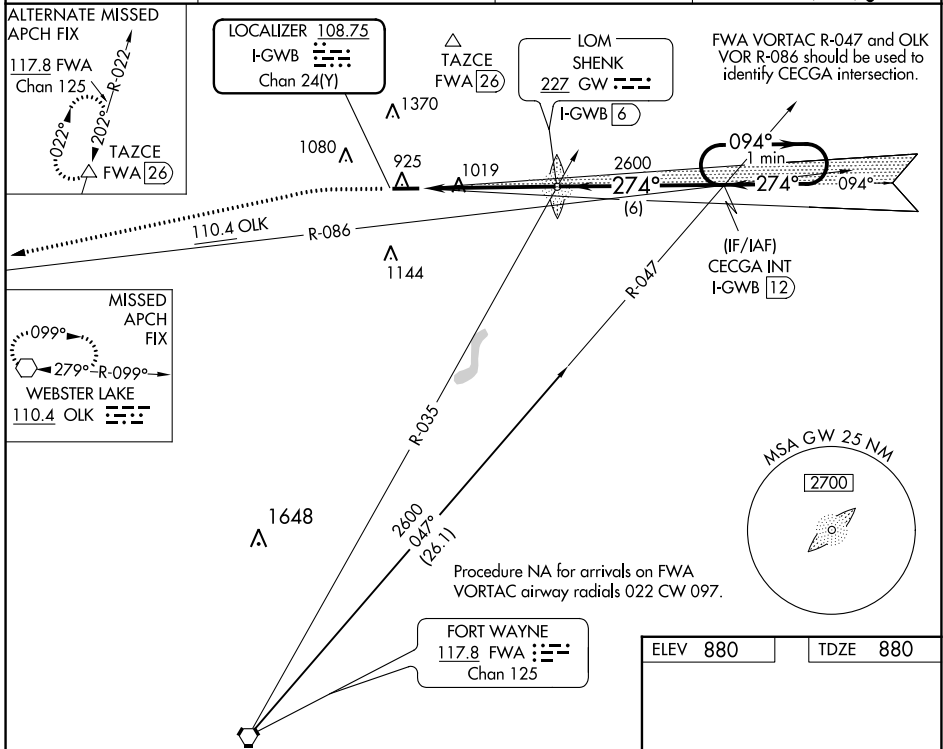
LOC/DME I-GWB 108.75 Chan 24 (Y)	APP CRS 274°	Rwy Idg TDZE Apt Elev	5000 880 880
---	------------------------	-----------------------------	---

ILS or LOC RWY 27

DE KALB COUNTY (GWB)

NA	MISSED APPROACH: Climb to 1400 then climbing left turn to 3000 direct OLK VOR and hold.
----	---

AWOS-3 124.15	FORT WAYNE APP CON 127.2 284.6	CLNC DEL 126.6	UNICOM 123.0 (CTAF) 0
-------------------------	--	--------------------------	---------------------------------

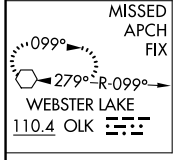


LOCALIZER 108.75
I-GWB
Chan 24(Y)

TAZCE
FWA [26]

LOM
SHENK
227 GW [6]

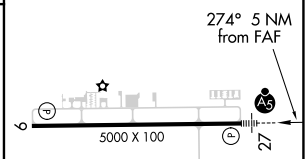
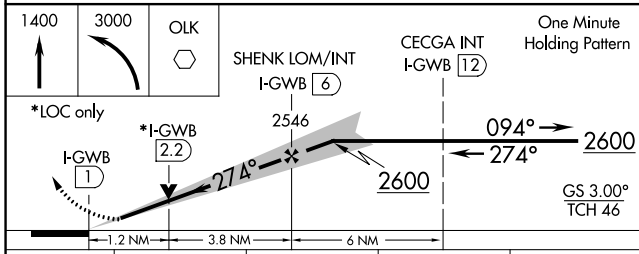
FWA VORTAC R-047 and OLK VOR R-086 should be used to identify CECGA intersection.



Procedure NA for arrivals on FWA VORTAC airway radials 022 CW 097.

FORT WAYNE
117.8 FWA
Chan 125

ELEV 880	TDZE 880
----------	----------



CATEGORY	A	B	C	D
S-ILS 27	1080-1/2		200 (200-1/2)	
S-LOC 27	1320-1/2 440 (500-1/2)	1320-3/4 440 (500-3/4)	1320-1 440 (500-1)	
CIRCLING	1320-1 440 (500-1)	1560-1 680 (700-1)	1720-2 1/2 840 (900-2 1/2)	1720-2 3/4 840 (900-2 3/4)

REIL Rwys 9 and 27	0
MIRL Rwy 9-27	0
FAF to MAP 5 NM	
Knots	60 90 120 150 180
Min:Sec	5:00 3:20 2:30 2:00 1:40

EC-2, 30 NOV 2023 to 28 DEC 2023

EC-2, 30 NOV 2023 to 28 DEC 2023