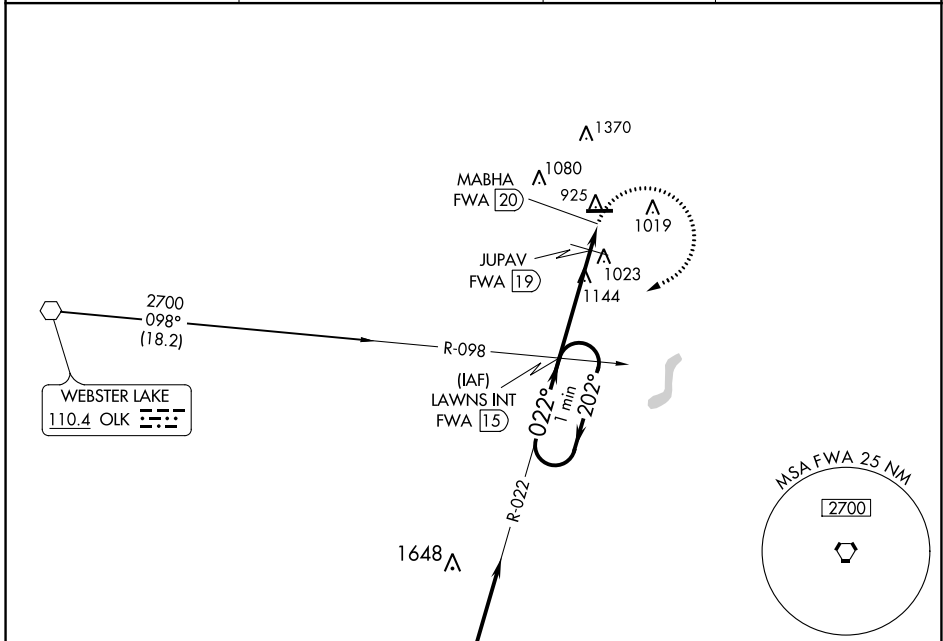


VORTAC FWA <b>117.8</b> Chan 125	APP CRS <b>022°</b>	Rwy Idg TDZE N/A Apt Elev 880
--	------------------------	--

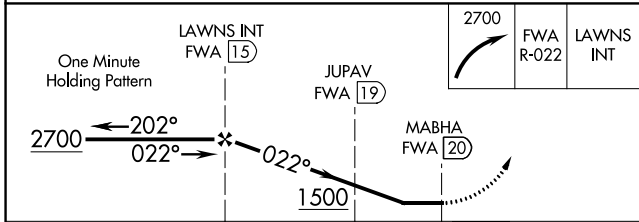
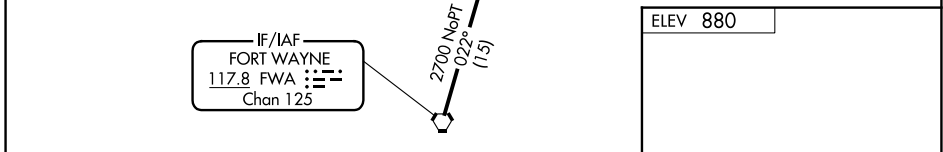
**VOR-A**  
DE KALB COUNTY (GWB)

		MISSED APPROACH: Climbing right turn to 2700 on FWA R-022 to LAWNS INT/FWA 15 DME and hold.	
AWOS-3 <b>124.15</b>	FORT WAYNE APP CON <b>127.2 284.6</b>	CLNC DEL <b>126.6</b>	UNICOM <b>123.0 (CTAF)</b>



EC-2, 30 NOV 2023 to 28 DEC 2023

EC-2, 30 NOV 2023 to 28 DEC 2023



ELEV 880

5000 X 100

016° 5 NM from FAF

REIL Rwy 9 and 27  
MIRL Rwy 9-27

FAF to MAP 5 NM

Category	A	B	C	D
CIRCLING	1500-1 620 (700-1)	1560-1 680 (700-1)	1720-2½ 840 (900-2½)	1720-2¾ 840 (900-2¾)
JUPAV FIX MINIMUMS				
CIRCLING	1360-1 480 (500-1)	1560-1 680 (700-1)	1720-2½ 840 (900-2½)	1720-2¾ 840 (900-2¾)

Knots	60	90	120	150	180
Min:Sec	5:00	3:20	2:30	2:00	1:40