

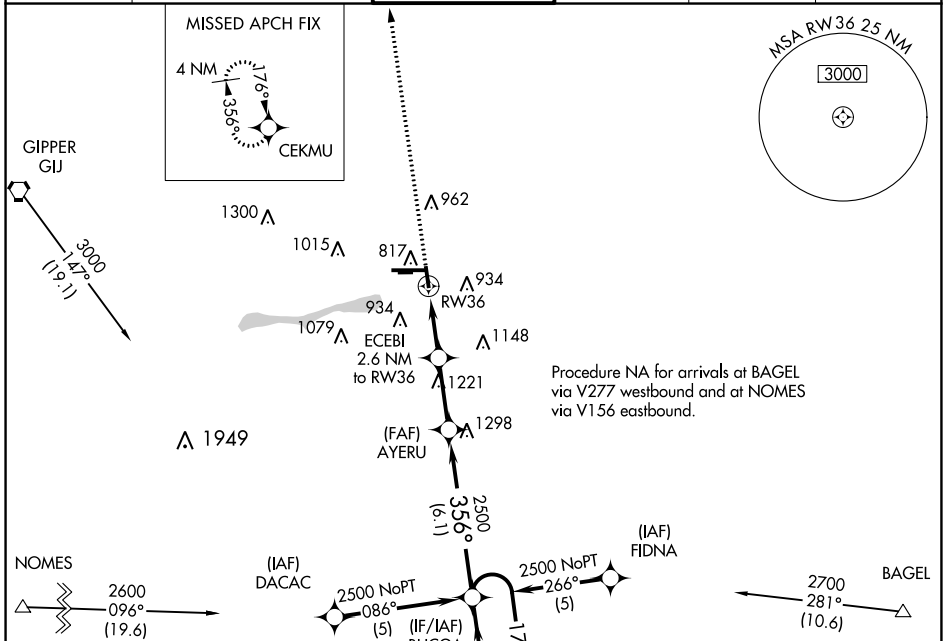
APP CRS	Rwy Idg	3999
356°	TDZE	776
	Apt Elev	778

RNAV (GPS) RWY 36

ELKHART MUNI (EKM)

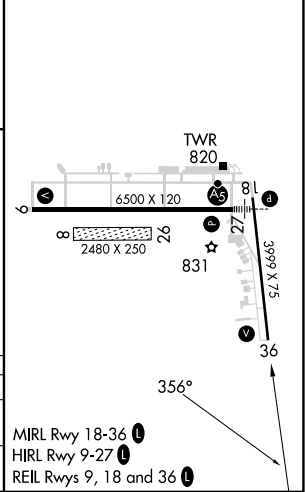
RNP APCH.	When local altimeter setting not received, use South Bend altimeter setting and increase all MDA 40 feet. Straight-in and Circling Rwy 36 NA at night. Rwy 36 helicopter visibility reduction below 1 SM NA. Circling NA to Rwys 8 and 26.	MISSED APPROACH: Climb to 2500 direct CEKMU and hold.
-----------	--	--

AWOS-3 124.475	SOUTH BEND APP CON * 118.55 257.8	ELKHART TOWER * 119.5 (CTAF) 0	GND CON 121.8	CLNC DEL 121.8	UNICOM 122.95
--------------------------	---	--	-------------------------	--------------------------	-------------------------



ELEV 778	D TDZE 776
----------	-------------------

2500	CEKMU	AYERU	BUCGA
↑	✦		
VGSi and descent angles not coincident (VGSi Angle 4.00/TCH 57).			
RW36			
2.6 NM			
2.6 NM			
6.1 NM			



CATEGORY	A	B	C	D
LNVA MDA	1220-1	444 (500-1)	1220-1 1/4 444 (500-1 1/4)	1220-1 1/2 444 (500-1 1/2)
C CIRCLING	1240-1 462 (500-1)	1300-1 522 (600-1)	1380-1 3/4 602 (700-1 3/4)	1580-2 1/2 802 (900-2 1/2)

EC-2, 30 NOV 2023 to 28 DEC 2023

EC-2, 30 NOV 2023 to 28 DEC 2023