

# RNAV (GPS) RWY 9

ELKHART MUNI (EKM)

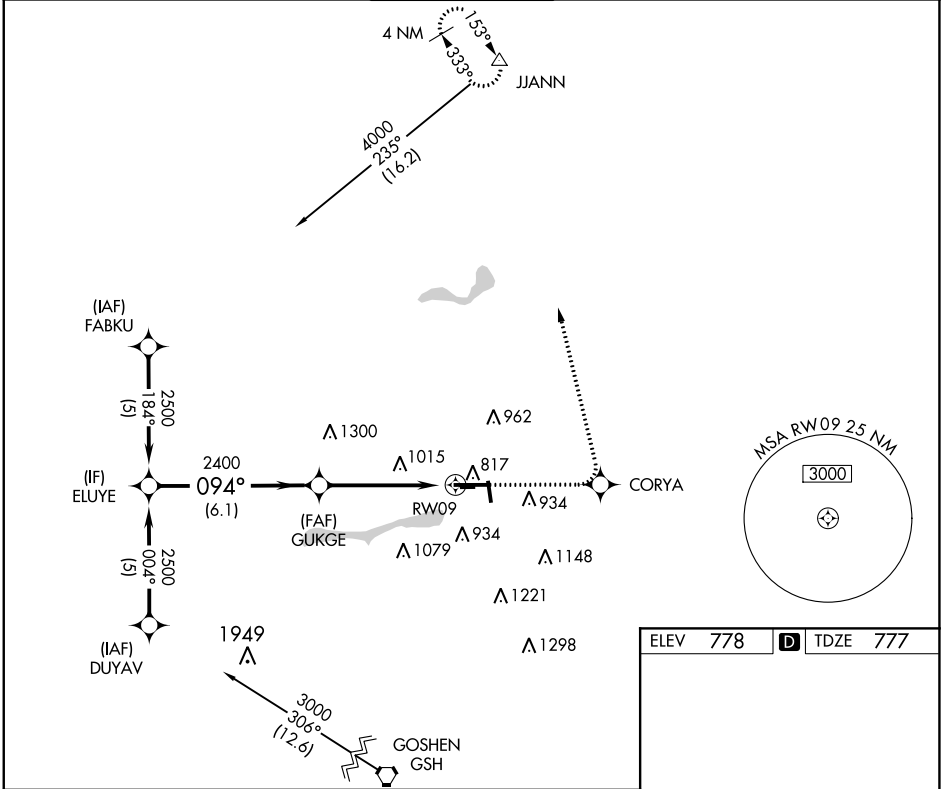
APP CRS	Rwy Idg	<b>6500</b>
<b>094°</b>	TDZE	<b>777</b>
	Apt Elev	<b>778</b>

RNP APCH.

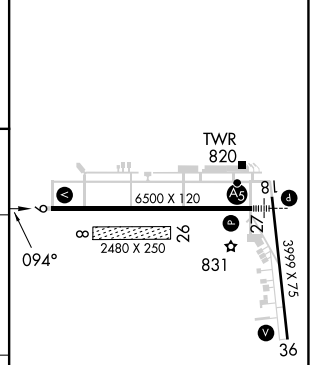
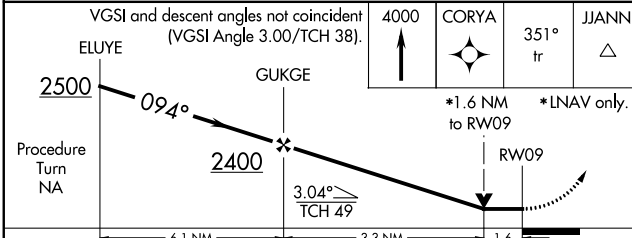
**▼** VDP NA when using South Bend altimeter setting. Circling Rwy 36 NA at night. Circling NA to Rwy 8 and 26. Rwy 9 helicopter visibility reduction below 3/4 SM NA. When local altimeter setting not received, use South Bend altimeter setting and increase all MDA 40 feet.

**MISSED APPROACH:**  
Climb to 4000 direct CORYA and via 351° track to JJANN and hold.

AWOS-3	SOUTH BEND APP CON *	ELKHART TOWER *	GND CON	CLNC DEL	UNICOM
<b>124.475</b>	<b>118.55 257.8</b>	<b>119.5 (CTAF) 0</b>	<b>121.8</b>	<b>121.8</b>	<b>122.95</b>



ELEV	<b>778</b>	TDZE	<b>777</b>
------	------------	------	------------



CATEGORY	A	B	C	D
LNVA MDA	1340-1	563 (600-1)	1340-1½ 563 (600-1½)	1340-1¾ 563 (600-1¾)
<b>C</b> CIRCLING	1340-1	562 (600-1)	1380-1¾ 602 (700-1¾)	1580-2½ 802 (900-2½)

MIRL Rwy 18-36 **0**  
HIRL Rwy 9-27 **0**  
REIL Rwys 9, 18 and 36 **0**

EC-2, 30 NOV 2023 to 28 DEC 2023

EC-2, 30 NOV 2023 to 28 DEC 2023