

VORTAC GJ 115.4 Chan 101	APP CRS 102°	Rwy Idg TDZE 777 Apt Elev 778
--	------------------------	---

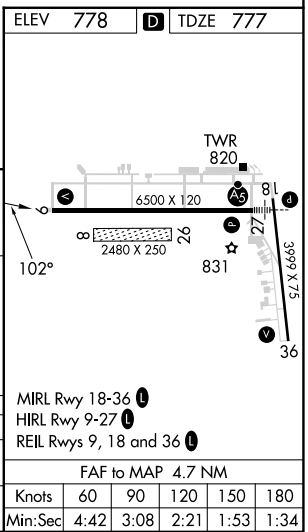
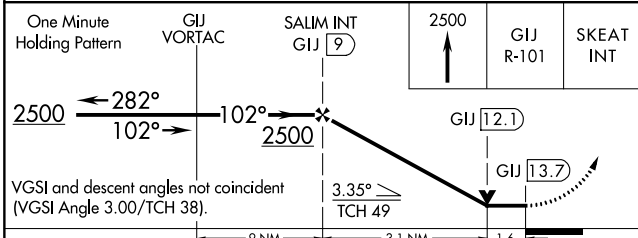
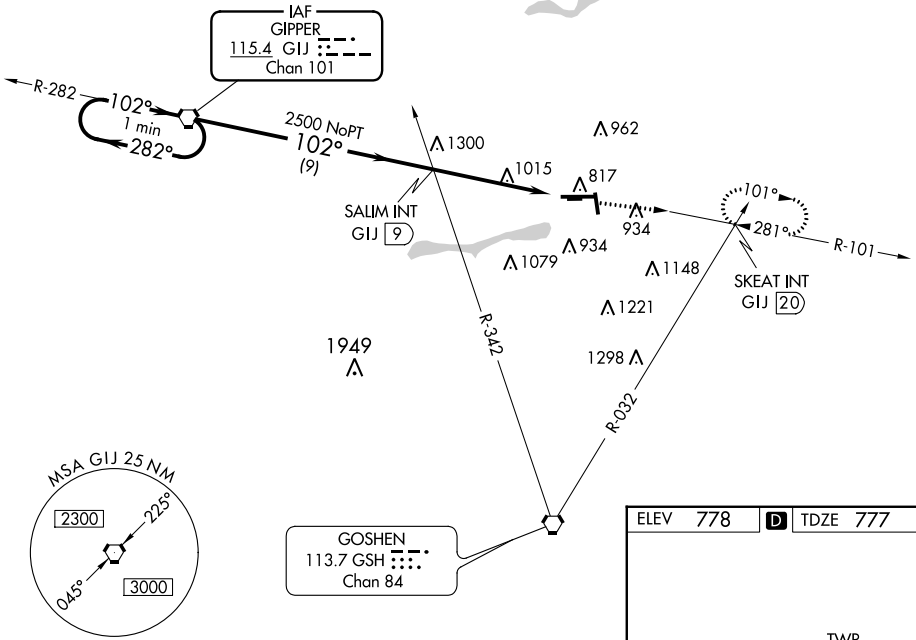
VOR RWY 9
ELKHART MUNI (EKM)

▼ Circling Rwy 36 NA at night. Circling NA to Rws 8 and 26. Rwy 9 helicopter visibility reduction below $\frac{3}{4}$ SM NA. When local altimeter setting not received, use South Bend altimeter setting and increase all MDA 40 feet. VDP NA when using South Bend altimeter setting.

MISSED APPROACH: Climb to 2500 via GJ R-101 to SKEAT INT/GJ 20 DME and hold.

AWOS-3 124.475	SOUTH BEND APP CON * 118.55 257.8	ELKHART TOWER * 119.5 (CTAF) 0	GND CON 121.8	CLNC DEL 121.8	UNICOM 122.95
--------------------------	---	--	-------------------------	--------------------------	-------------------------

NoPT for arrivals on GJ VORTAC
airway radials 209 CW 310.



CATEGORY	A	B	C	D
S-9	1340-1 563 (600-1)	1340-1½ 563 (600-1½)	1340-1¾ 563 (600-1¾)	1340-2 563 (600-2)
C CIRCLING	1340-1 562 (600-1)	1380-1¾ 602 (700-1¾)	1580-2½ 802 (900-2½)	

FAF to MAP 4.7 NM	
Knots	60 90 120 150 180
Min:Sec	4:42 3:08 2:21 1:53 1:34

EC-2, 30 NOV 2023 to 28 DEC 2023

EC-2, 30 NOV 2023 to 28 DEC 2023