

LOC I-GLR <b>111.1</b>	APP CRS <b>096°</b>	Rwy ldg TDZE Apt Elev	<b>6579</b> <b>1321</b> <b>1328</b>
---------------------------	------------------------	-----------------------------	---

**ILS or LOC RWY 9**  
GAYLORD RGNL (G.L.R.)

**NA** When local altimeter setting not received, use Grayling altimeter setting and increase all DA 71 feet and all MDA 80 feet; increase S-LOC 9 and Circling Cat C/D visibility ¼ mile. For inop MALSRL when using Grayling altimeter setting, increase S-ILS all Cats visibility to ¾ mile. Night landing: Rwy 18,36 NA.



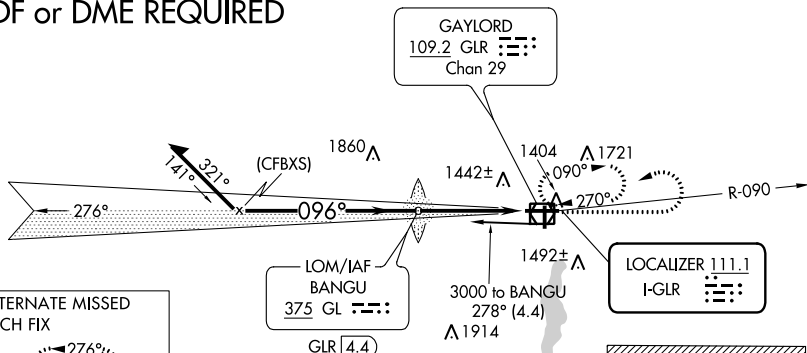
**MISSED APPROACH:**  
Climb to 3000 then left turn direct GLR VOR/DME and hold.

ASOS  
**118.375**

MINNEAPOLIS CENTER  
**134.6 354.05**

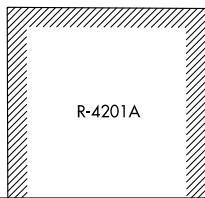
UNICOM  
**122.8 (CTAF) 0**

**ADF or DME REQUIRED**

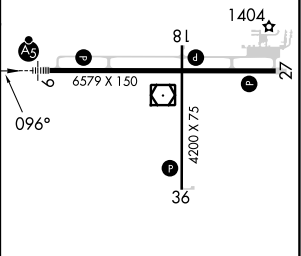
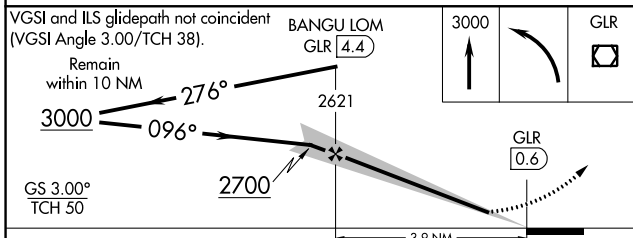


**ALTERNATE MISSED APCH FIX**

BANGU  
375 GL 4.4  
GLR 4.4  
ADF REQUIRED



ELEV 1328 TDZE 1321



CATEGORY	A	B	C	D
S-ILS 9	1521-½ 200 (200-½)			
S-LOC 9	1860-½	539 (600-½)	1860-1	539 (600-1)
CIRCLING	1860-1 532 (600-1)	1940-1 612 (700-1)	2040-2 712 (800-2)	2080-2½ 752 (800-2½)

REIL Rwy 27, 18 and 36  
MIRL Rwy 18-36  
HIRL Rwy 9-27

FAF to MAP 3.9 NM

Knots	60	90	120	150	180
Min:Sec	3:54	2:36	1:57	1:34	1:18

EC-1, 30 NOV 2023 to 28 DEC 2023

EC-1, 30 NOV 2023 to 28 DEC 2023