

WAAS CH <b>56327</b> <b>W27A</b>	APP CRS <b>276°</b>	Rwy Idg TDZE Apt Elev	<b>6579</b> <b>1328</b> <b>1328</b>
--	------------------------	-----------------------------	---

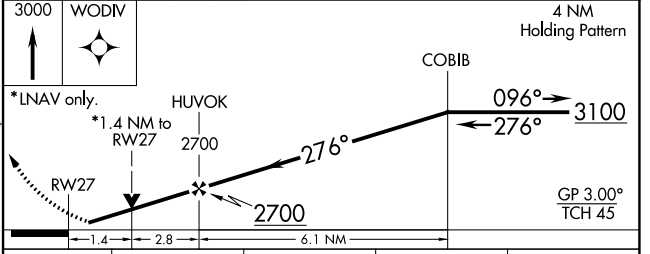
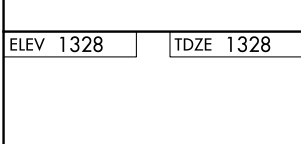
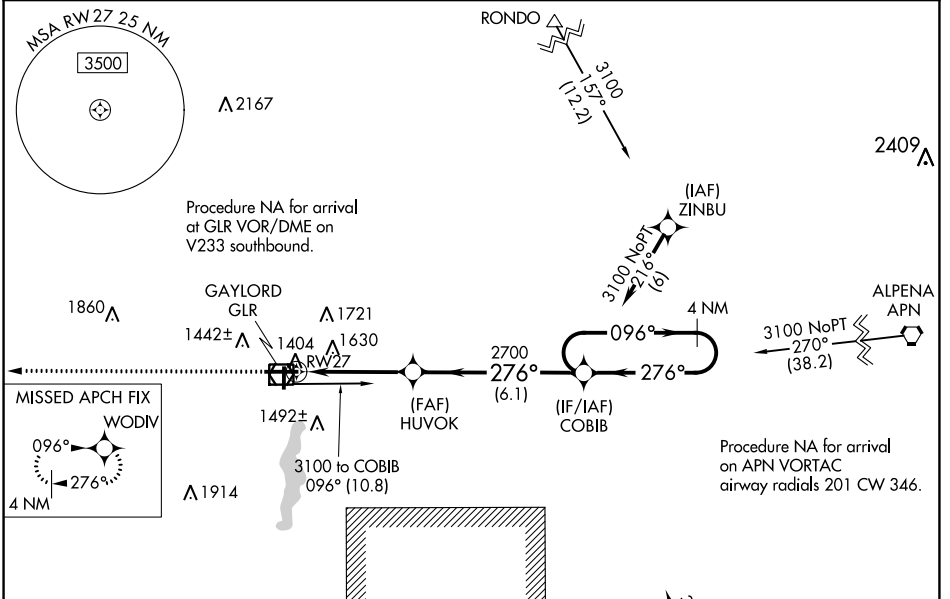
# RNAV (GPS) RWY 27

GAYLORD RGNL (GLR)

**⚠** Circling to Rwy 18 and Rwy 36 NA at night. DME/DME RNP-0.3 NA. When local altimeter setting not received, use Grayling altimeter setting and increase all DA 71 feet and all MDA 80 feet. Increase LNAV and Circling Cats C and D visibility ¼ mile. Rwy 27 Helicopter visibility reduction below ¾ SM NA.

MISSED APPROACH: Climb to 3000 direct WODIV and hold.

ASOS <b>118.375</b>	MINNEAPOLIS CENTER <b>134.6 354.05</b>	UNICOM <b>122.8 (CTAF) 0</b>
------------------------	---	---------------------------------



CATEGORY	A	B	C	D
LPV DA	1578-1		250 (300-1)	
LNAV MDA	1820-1	492 (500-1)	1820-1½	492 (500-1½)
CIRCLING	1840-1 512 (600-1)	1940-1 612 (700-1)	2040-2 712 (800-2)	2080-2½ 752 (800-2½)

REIL Rwy 18, 27 and 36  
MIRL Rwy 18-36  
HIRL Rwy 9-27

EC-1, 30 NOV 2023 to 28 DEC 2023

EC-1, 30 NOV 2023 to 28 DEC 2023