

WAAS CH <b>97427</b> <b>W09A</b>	APP CRS <b>096°</b>	Rwy Idg TDZE Apt Elev	<b>6579</b> <b>1321</b> <b>1328</b>
--	------------------------	-----------------------------	---

# RNAV (GPS) RWY 9

GAYLORD RGNL (GLR)

**⚠** Circling to Rwy 18 and Rwy 36 NA at night. Baro-VNAV and VDP NA when using Grayling altimeter setting. For uncompensated Baro-VNAV systems, LNAV/VNAV NA below -17°C (2°F) or above 35°C (95°F). DME/DME RNP-0.3 NA. When local altimeter setting not received, use Grayling altimeter setting and increase all DA 71 feet and all MDA 80 feet. Increase LNAV/VNAV all Cats visibility 1/8 mile and Circling Cats C and D visibility 1/4 mile. Inoperative table does not apply to LNAV Cats A and B. For inoperative MALSR increase LNAV Cats C and D visibility to 1%. When using Grayling altimeter setting increase LNAV Cats C and D visibility to 1%.

MALSR

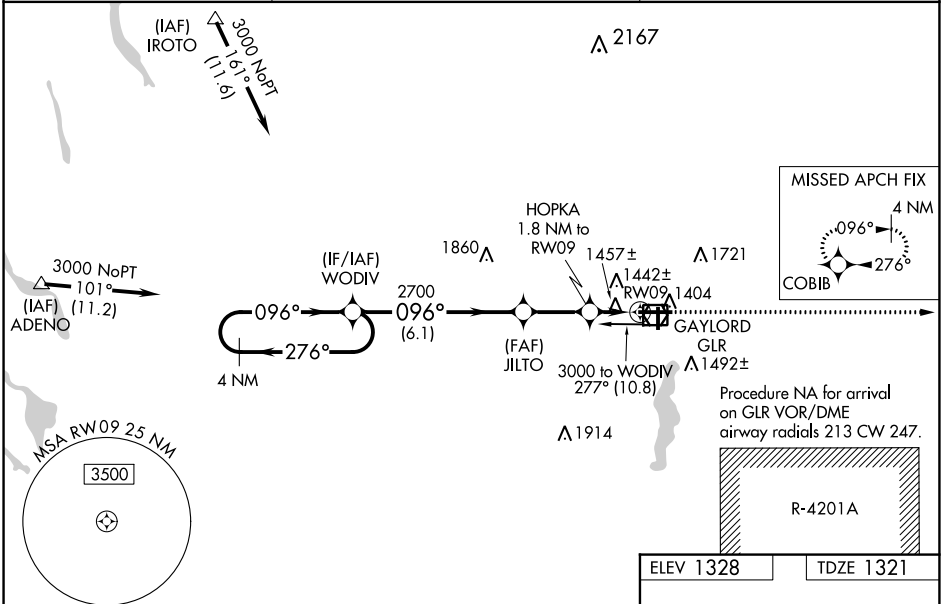


**MISSED APPROACH:**  
Climb to 3100 direct COBIB and hold.

ASOS  
**118.375**

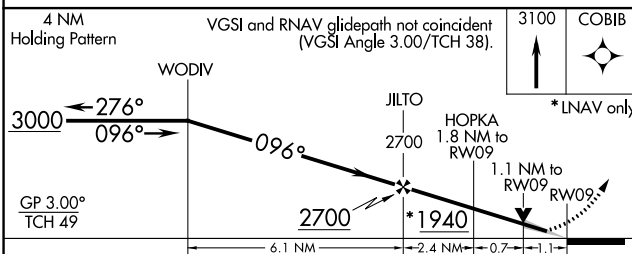
MINNEAPOLIS CENTER  
**134.6 354.05**

UNICOM  
**122.8 (CTAF)**

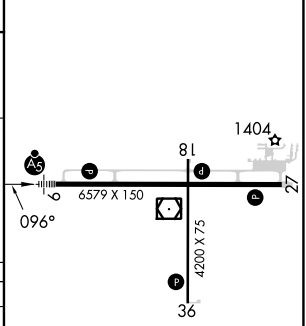


EC-1, 30 NOV 2023 to 28 DEC 2023

EC-1, 30 NOV 2023 to 28 DEC 2023



ELEV 1328	TDZE 1321
-----------	-----------



CATEGORY	A	B	C	D
LPV DA		1571-1	250 (300-1)	
LNAV/VNAV DA		1732-1	411 (500-1)	
LNAV MDA		1720-1	399 (400-1)	
CIRCLING	1840-1 512 (600-1)	1940-1 612 (700-1)	2040-2 712 (800-2)	2080-2½ 752 (800-2½)

REIL Rwy 18, 27 and 36  
MIRL Rwy 18-36  
HIRL Rwy 9-27