

VOR/DME GLR 109.2 Chan 29	APP CRS 269°	Rwy Idg TDZE Apt Elev	6579 1328 1328
---	------------------------	-----------------------------	---

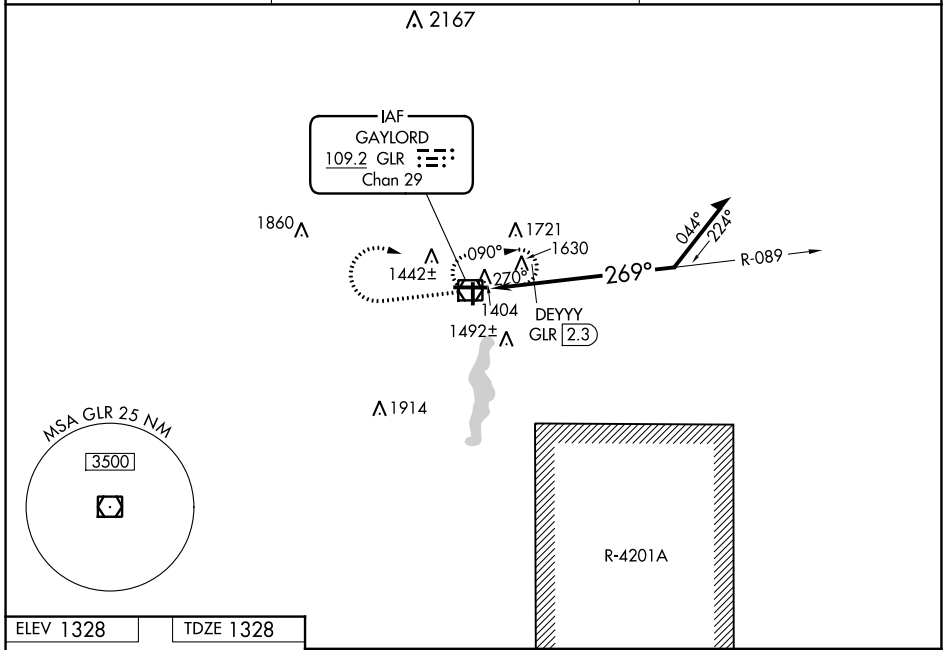
VOR RWY 27

GAYLORD RGNL (GLR)

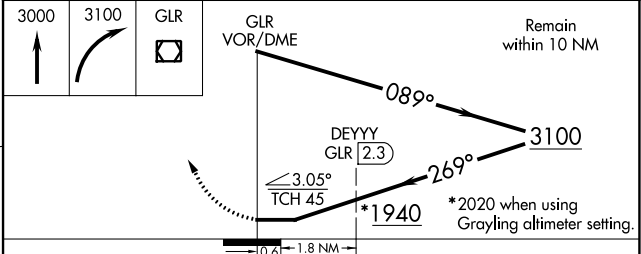
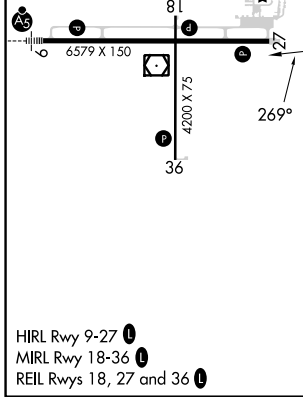
⚠ Circling Rwy 18, 36 NA at night. Rwy 27 helicopter visibility reduction below 3/4 SM NA. When local altimeter setting not received, use Grayling altimeter setting and increase all MDA 80 feet. Increase S-27 and Circling Cat C/D visibility 1/4 mile. Increase DEYYY FIX minimums S-27 and Circling Cat C/D visibility 1/4 mile.

MISSED APPROACH:
Climb to 3000 then climbing right turn to 3100 direct GLR VOR/DME and hold.

ASOS 118.375	MINNEAPOLIS CENTER 134.6 354.05	UNICOM 122.8 (CTAF)
------------------------	---	-------------------------------



ELEV 1328	TDZE 1328
-----------	-----------



CATEGORY	A	B	C	D
S-27	1940-1	612 (700-1)	1940-1 3/4	612 (700-1 3/4)
CIRCLING	1940-1	612 (700-1)	2040-2 712 (800-2)	2080-2 1/2 752 (800-2 1/2)
DEYYY FIX MINIMUMS				
S-27	1880-1	552 (600-1)	1880-1 5/8	552 (600-1 5/8)
CIRCLING	1880-1 552 (600-1)	1940-1 612 (700-1)	2040-2 712 (800-2)	2080-2 1/2 752 (800-2 1/2)

EC-1, 30 NOV 2023 to 28 DEC 2023

EC-1, 30 NOV 2023 to 28 DEC 2023