

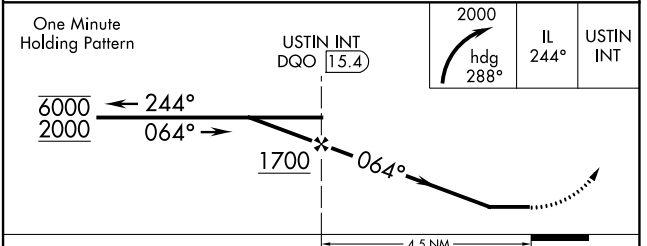
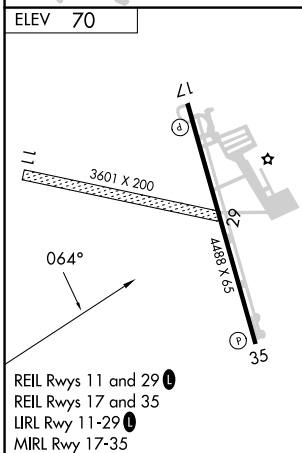
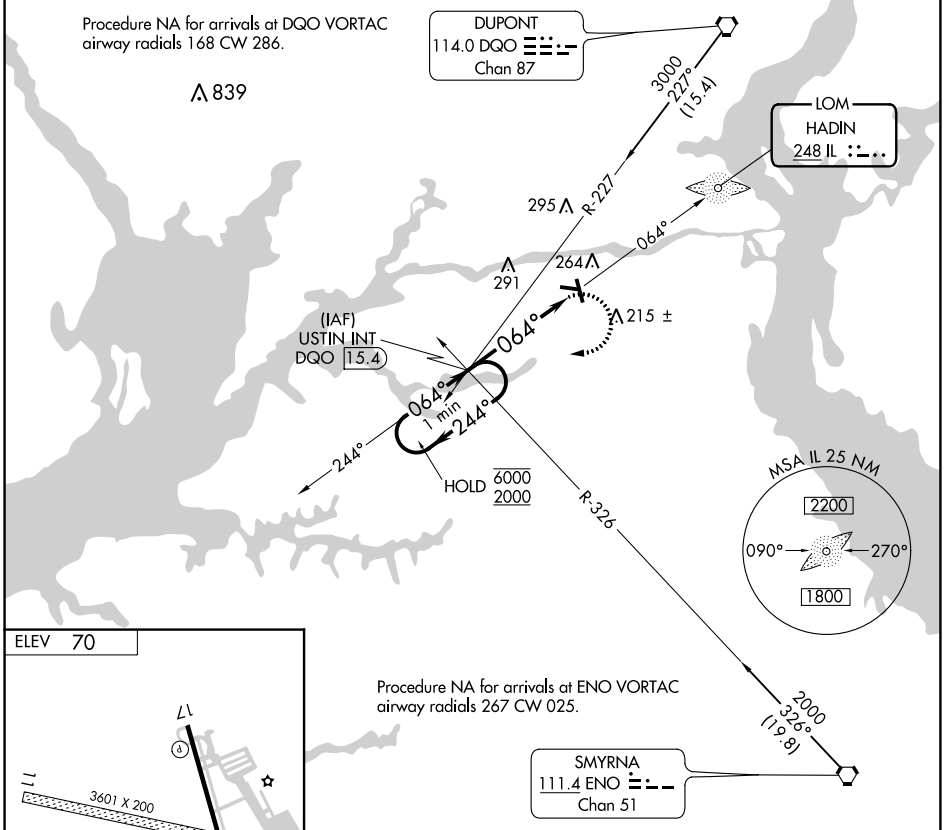
LOM IL <b>248</b>	APP CRS <b>064°</b>	Rwy Idg TDZE Apt Elev	<b>N/A</b> <b>N/A</b> <b>70</b>
----------------------	------------------------	-----------------------------	---------------------------------------

**NDB-A**  
SUMMIT (E.V.Y)

**⚠** Circling NA to Rws 11 and 29. Circling Rwy 17 NA at night. When local altimeter setting not received, use Wilmington altimeter setting and increase all MDAs 40 feet.

**⚠** MISSED APPROACH: Climbing right turn to 2000 on heading 288° and 244° bearing from HADIN LOM to USTIN INT/DQO 15.4 DME and hold, continue climb-in-hold to 2000.

AWOS-3 <b>132.325</b>	PHILADELPHIA APP CON <b>118.35 323.1</b>	UNICOM <b>122.725</b> (CTAF)	<b>123.5</b> <b>0</b>
--------------------------	---	---------------------------------	-----------------------



FAF to MAP 4.5 NM					
Knots	60	90	120	150	180
Min:Sec	4:30	3:00	2:15	1:48	1:30
CATEGORY	A	B	C	D	
CIRCLING	660-1 590 (600-1)	700-1 630 (700-1)	700-1¾ 630 (700-1¾)	700-2 630 (700-2)	

NE-3, 30 NOV 2023 to 28 DEC 2023

NE-3, 30 NOV 2023 to 28 DEC 2023