

WAAS CH 49002 W17A	APP CRS 175°	Rwy Idg TDZE Apt Elev	4488 70 70
--	------------------------	-----------------------------	---------------------------------------

RNAV (GPS) RWY 17

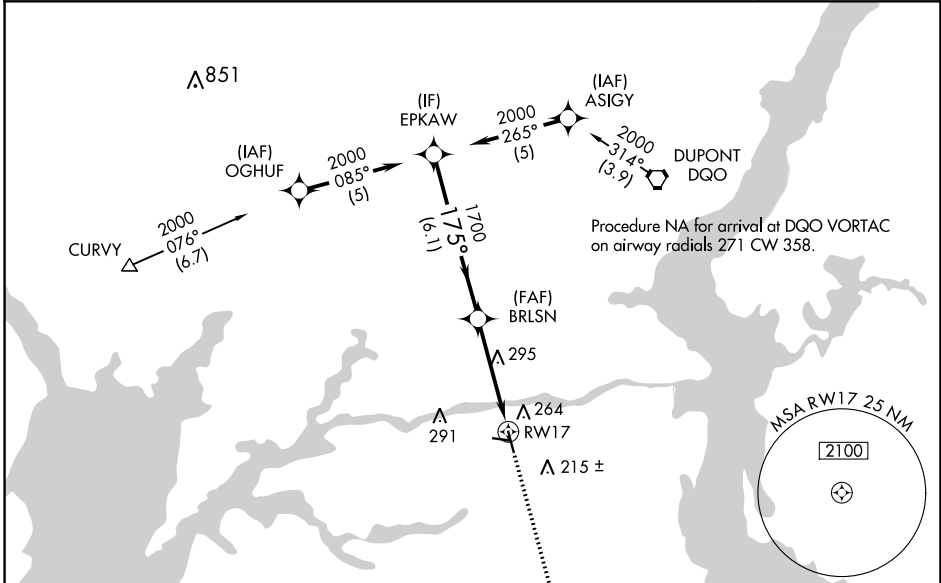
SUMMIT (EVY)

RNP APCH - GPS.

▼ Procedure NA at night. Rwy 17 helicopter visibility reduction below 1 SM NA.
 ▲ For uncompensated Baro-VNAV systems, LNAV/VNAV NA below -15°C or above 54°C.

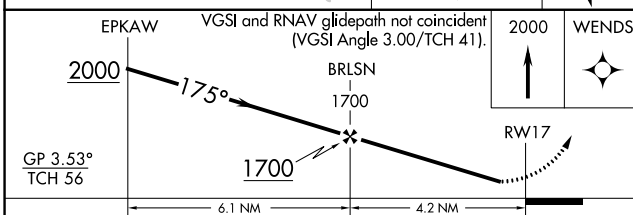
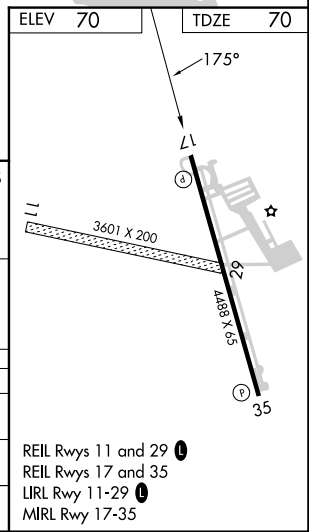
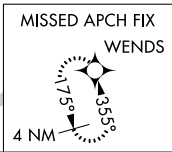
MISSED APPROACH: Climb to 2000 direct WENDS and hold.

AWOS-3 132,325	PHILADELPHIA APP CON 118,35 323.1	UNICOM 122,725 (CTAF)	123.5
--------------------------	---	---------------------------------	--------------



NE-3, 30 NOV 2023 to 28 DEC 2023

NE-3, 30 NOV 2023 to 28 DEC 2023



CATEGORY	A	B	C	D
LPV DA	541-1 ³ / ₈	471 (500-1 ³ / ₈)		NA
LNAV/VNAV DA	619-1 ⁵ / ₈	549 (600-1 ⁵ / ₈)		NA
LNAV MDA	560-1	490 (500-1)	560-1 ³ / ₈ 490 (500-1 ³ / ₈)	NA

REIL Rwy 11 and 29

REIL Rwy 17 and 35

LRL Rwy 11-29

MRL Rwy 17-35