

APP CRS	Rwy Idg	4488
335°	TDZE	70
	Apt Elev	70

RNAV (GPS) Y RWY 35

SUMMIT (EVY)

RNP APCH - GPS.

MISSED APPROACH: Climbing left turn to 2000 direct WENDS and hold.

⚠ Rwy 35 helicopter visibility reduction below 3/4 SM NA.

AWOS-3
132.325

PHILADELPHIA APP CON
118.35 323.1

UNICOM
122.725 (CTAF)

123.5 0

⚠ 839

⚠ 295

⚠ 291

⚠ 264

(MAP) CEXEL

⚠ 215 ±

Final approach course offset 20°.

179 ±

HIRSI

1.6 NM to CEXEL

(FAF) REULE

1700

335°

(IF) WYNOS

2000

(9.5)

WENDS

4 NM

175°

355°

2000

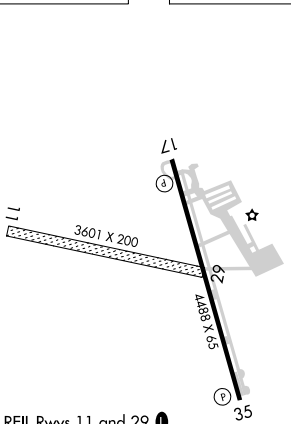
(9.5)

(IF) SMYRNA

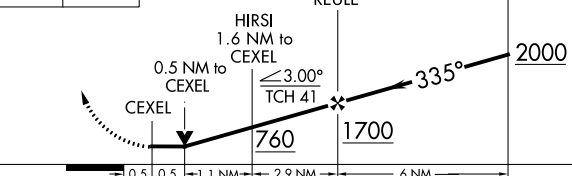
ENO

Procedure NA for arrival on ENO VORTAC airway radials 271 CW 063.

ELEV 70	TDZE 70
---------	---------



REIL Rwy 11 and 29 **0**
 REIL Rwy 17 and 35 **0**
 LIRL Rwy 11-29 **0**
 MIRL Rwy 17-35



CATEGORY	A	B	C	D
LNAV MDA	440-1 370 (400-1)			

NE-3, 30 NOV 2023 to 28 DEC 2023

NE-3, 30 NOV 2023 to 28 DEC 2023