

WAAS CH <b>56234</b> <b>W18A</b>	APP CRS <b>184°</b>	Rwy Idg <b>3800</b> TDZE <b>835</b> Apt Elev <b>835</b>
--	------------------------	---

# RNAV (GPS) RWY 18

DUPONT/LAPEER (D95)

**⚠** DME/DME RNP-0.3 NA. Helicopter visibility reduction below 3/4 SM NA. When local altimeter setting not received, use Flint altimeter setting and increase all MDAs 60 feet and increase LP Cat C visibility 1/8 mile, LNAV Cat C and Circling Cat C visibility 1/4 mile. Circling NA to Rwy 9 and 27.

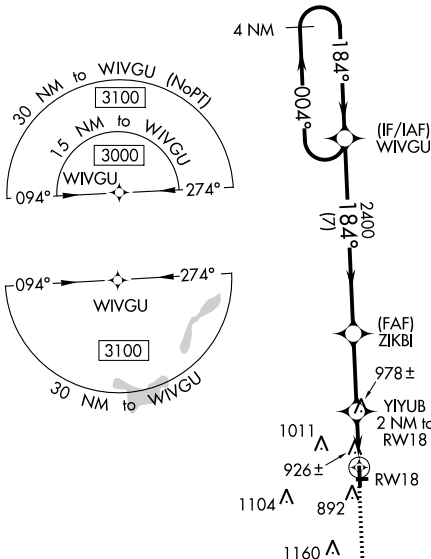
**MISSED APPROACH:**  
Climb to 3000 direct ZUSDI and hold.

AWOS-3P  
**134.050**

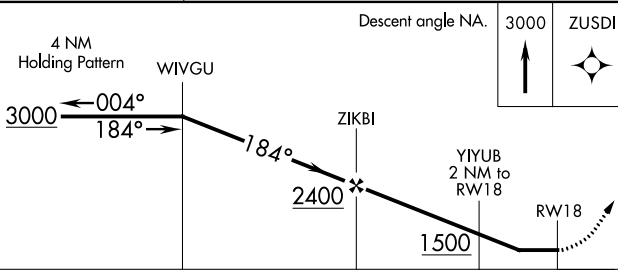
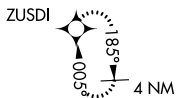
GREAT LAKES APP CON ★  
**118.8 257.9**

UNICOM  
**123.0 (CTAF) ①**

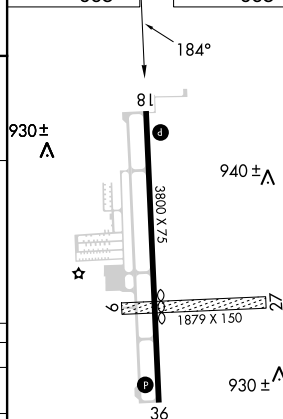
△ 2013



MISSED APCH FIX



ELEV 835 TDZE 835



CATEGORY	A	B	C	D
LP MDA	1180-1 345 (400-1)			NA
LNAV MDA	1240-1	405 (500-1)	1240-1 1/8 405 (500-1 1/8)	NA
<b>C</b> CIRCLING	1300-1 465 (500-1)	1380-1 545 (600-1)	1460-1 3/4 625 (700-1 3/4)	NA

MIRL Rwy 18-36 ①  
REIL Rwy 18 and 36 ①