

WAAS CH 70704 W32A	APP CRS 318°	Rwy Idg TDZE Apt Elev	5425 20 20
--	------------------------	-----------------------------	---------------------------------------

RNAV (GPS) RWY 32

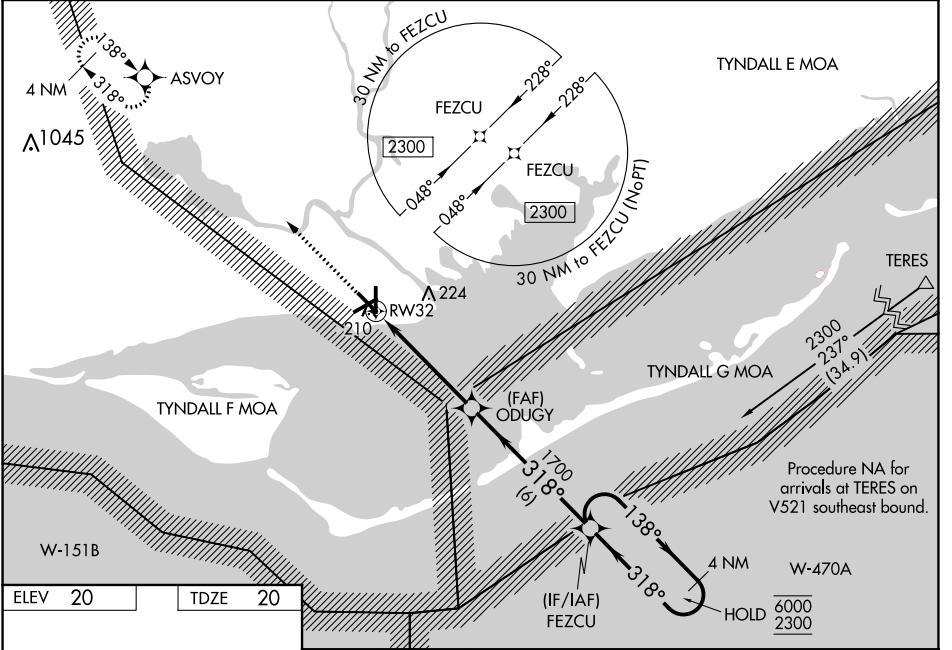
APALACHICOLA RGNL-CLEVE RANDOLPH FLD (AAF)

RNP APCH - GPS.

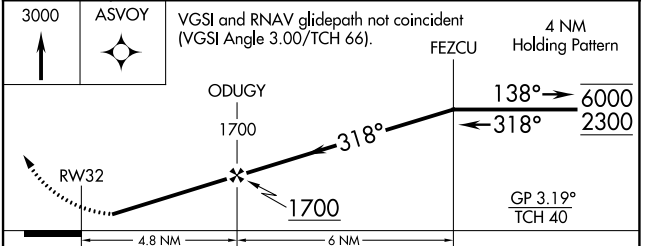
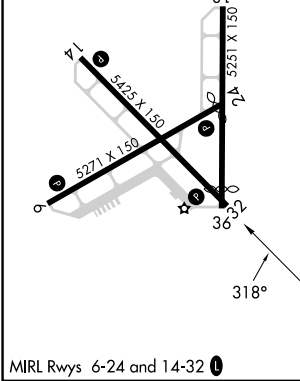
⚠ Rwy 32 helicopter visibility reduction below 1 SM NA. Baro-VNAV NA when using Northwest Florida Beaches Intl altimeter setting. For uncompensated Baro-VNAV systems, LNAV/VNAV NA below -15°C or above 54°C. Straight-in Rwy 32 NA at night, Circling Rwy 6, 18, 24, 32 NA at night. When local altimeter setting not received, use Northwest Florida Beaches Intl altimeter setting and increase LPV DA to 480 feet and all visibilities $\frac{3}{8}$ SM. Increase LNAV/VNAV DA to 527 feet and all visibilities $\frac{3}{8}$ SM. Increase all MDAs 140 feet and LNAV visibility Cat C/D $\frac{3}{8}$ SM, and Circling visibility Cat C/D $\frac{1}{2}$ SM.

MISSED APPROACH: Climb to 3000 direct ASVOY and hold, continue climb-in-hold to 3000.

ASOS 119.925	TYNDALL APP CON * 124.15	UNICOM 122.8 (CTAF)
------------------------	------------------------------------	-------------------------------



ELEV 20	TDZE 20
---------	---------



CATEGORY	A	B	C	D
LPV DA	349-1 $\frac{1}{8}$ 329 (400-1 $\frac{1}{8}$)			
LNAV/VNAV DA	396-1 376 (400-1)			
LNAV MDA	460-1	440 (500-1)	460-1 $\frac{1}{4}$	440 (500-1 $\frac{1}{4}$)
C CIRCLING	520-1	500 (500-1)	680-1 $\frac{3}{4}$ 660 (700-1 $\frac{3}{4}$)	680-2 660 (700-2)

RNAV (GPS) RWY 32

SE-3, 30 NOV 2023 to 28 DEC 2023

SE-3, 30 NOV 2023 to 28 DEC 2023