

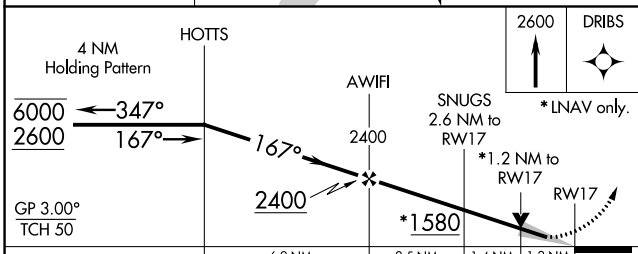
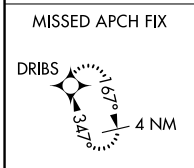
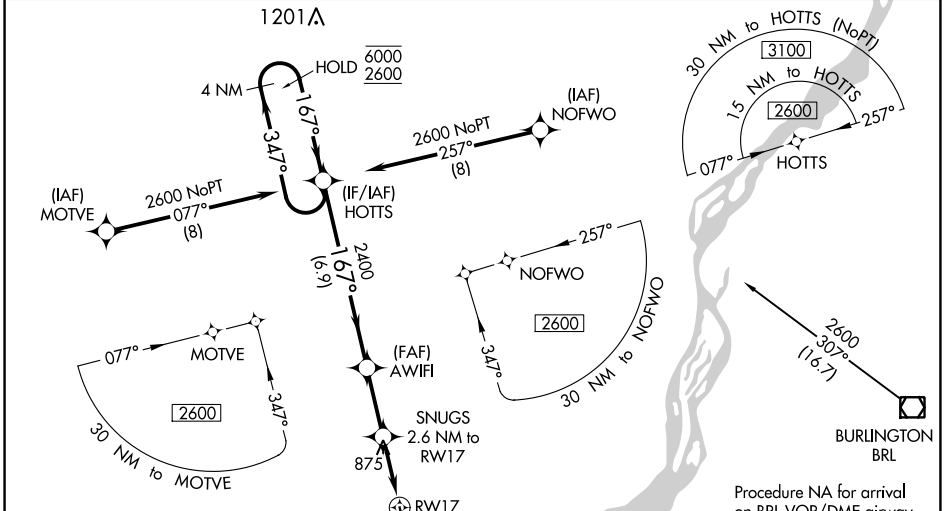
WAAS CH <b>82641</b> <b>W17A</b>	APP CRS <b>167°</b>	Rwy Idg TDZE Apt Elev	<b>4000</b> <b>722</b> <b>722</b>
--	------------------------	-----------------------------	---

# RNAV (GPS) RWY 17

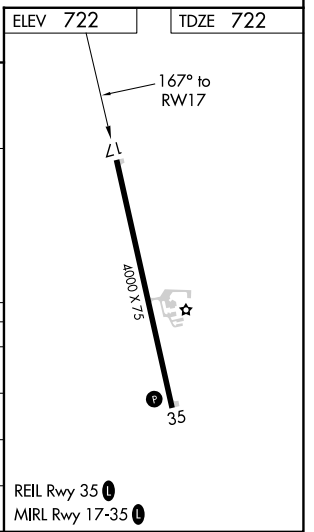
FORT MADISON MUNI (F'SW)

RNP APCH. ▼ For uncompensated Baro-VNAV systems, LNAV/VNAV NA below -16°C or above 54°C. ▲	MISSED APPROACH: Climb to 2600 direct DRIBS and hold.
--	---

AWOS-3 <b>120.925</b>	CHICAGO CENTER <b>135.6 316.1</b>	UNICOM <b>122.8 (CTAF) 0</b>
--------------------------	--------------------------------------	---------------------------------



CATEGORY	A	B	C	D
LPV DA		972-1	250 (300-1)	
LNAV/VNAV DA		972-1	250 (300-1)	
LNAV MDA	1140-1	418 (500-1)	1140-1½	418 (500-1½)
<b>C</b> CIRCLING	1200-1	478 (500-1)	1220-1½	1500-2½
			498 (500-1½)	778 (800-2½)



NC-3, 30 NOV 2023 to 28 DEC 2023

NC-3, 30 NOV 2023 to 28 DEC 2023