

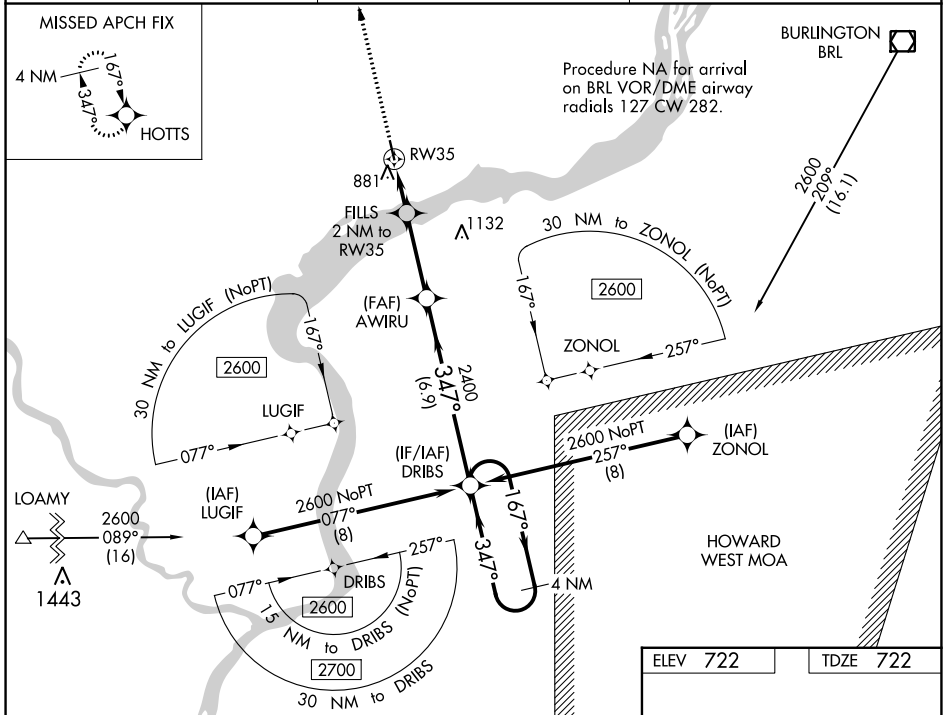
WAAS CH <b>70741</b> <b>W35A</b>	APP CRS <b>347°</b>	Rwy Idg TDZE <b>722</b> Apt Elev <b>722</b>	<b>4000</b>
--	------------------------	---	-------------

# RNAV (GPS) RWY 35

FORT MADISON MUNI (F'SW)

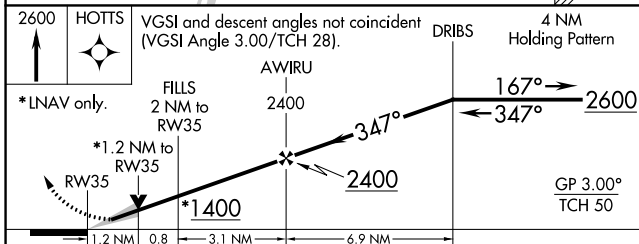
RNP APCH.	MISSED APPROACH: Climb to 2600 direct HOTTs and hold.
For uncompensated Baro-VNAV systems, LNAV/VNAV NA below -16°C (4°F) or above 54°C (130°F).	

AWOS-3 <b>120.925</b>	CHICAGO CENTER <b>135.6 316.1</b>	UNICOM <b>122.8 (CTAF)</b>
--------------------------	--------------------------------------	-------------------------------



NC-3, 30 NOV 2023 to 28 DEC 2023

NC-3, 30 NOV 2023 to 28 DEC 2023



CATEGORY	A	B	C	D
LPV DA	972-1 250 (300-1)			
LNAV/VNAV DA	1158-1¼ 436 (500-1¼)			
LNAV MDA	1140-1 418 (500-1)	1140-1½ 418 (500-1½)		
CIRCLING	1200-1 478 (500-1)	1220-1½ 498 (500-1½)	1500-2½ 778 (800-2½)	

