

FORT DRUM, NEW YORK

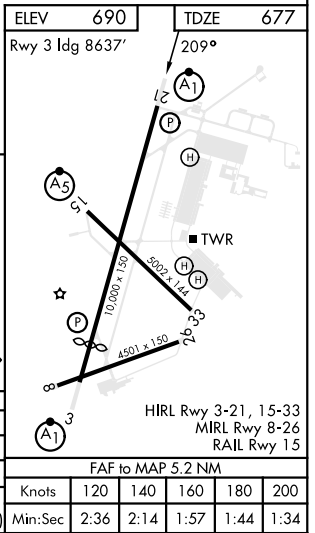
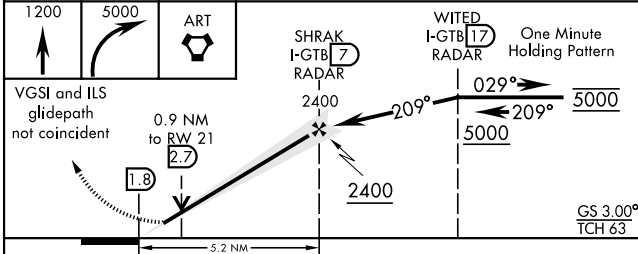
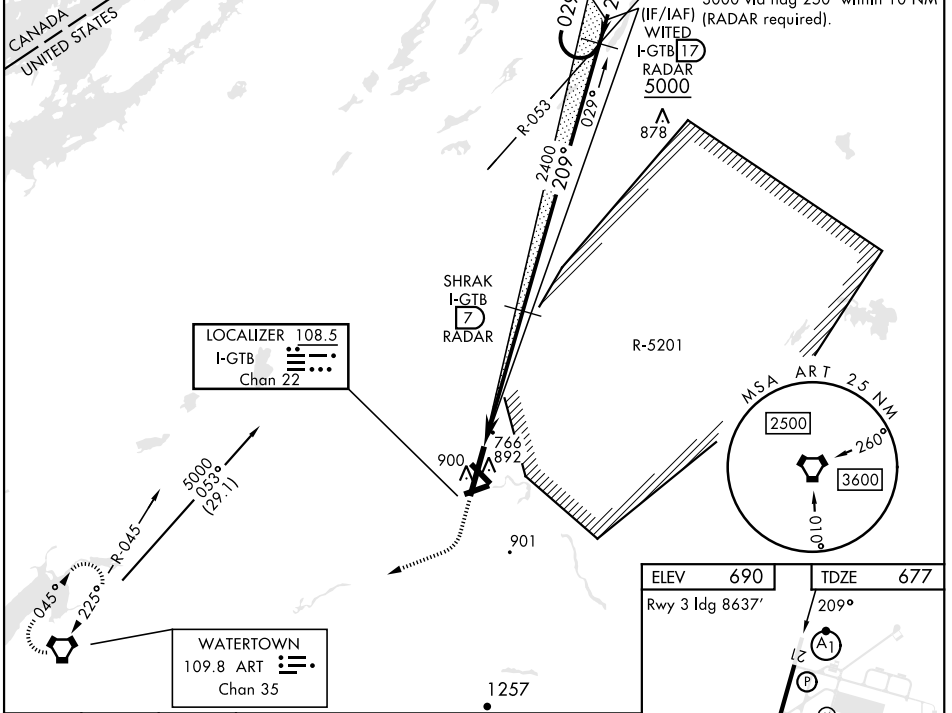
ILS or LOC RWY 21

LOC/DME I-GTB 108.5 Chan 22	APCH CRS 209°	Rwy ldg 10,000 TDZE 677 Arpt Elev 690	AL-5754 [USA]	WHEELER-SACK AAF (KGTB)
---	-------------------------	--	---------------	-------------------------

DME or RADAR required	ALSIF-1 	MISSED APPROACH: Climb to 1200, then climbing right turn to 5000 direct ART VORTAC and hold. Continue climb-in-hold to 5000.
* When ALS inop, increase vis to 3/4 mile. ** When ALS inop, increase CAT ABC vis to 1 mile, CAT DE vis to 1 1/4 miles.		

ATIS 119.525	APP CON 124.875 307.125	TOWER 118.75 290.25	GND CON 121.9 229.8	CLNC DEL 121.9	ASR/PAR
------------------------	-----------------------------------	-------------------------------	-------------------------------	--------------------------	---------

*** Circling NA E of Rwy 21 and 33.
 Circling NA for CAT BCD to Rwy 8.
 Circling NA for CAT E to Rwy 8-26 and 15-33.



CATEGORY	A	B	C	D	E
S-ILS 21 *		877-1/2	200	(200-1/2)	
S-LOC 21 **	1040-1/2	363 (400-1/2)	1040-3/4	363 (400-3/4)	
CIRCLING ***	1200-1	1220-1 1/2	530 (600-1 1/2)	1380-2 1/4	1640-3
	510 (600-1)			690 (700-2 1/4)	950 (1000-3)

FORT DRUM, NEW YORK 44° 03'N-75° 43'W WHEELER-SACK AAF (KGTB)

Amtd 3 20APR23

ILS or LOC RWY 21

NE-2, 30 NOV 2023 to 28 DEC 2023

NE-2, 30 NOV 2023 to 28 DEC 2023