

RNAV (GPS) RWY 33

APCH CRS 327°
 Rwy ldg 5002
 TDZE 690
 Arprt Elev 690

AL-5754 (USA)

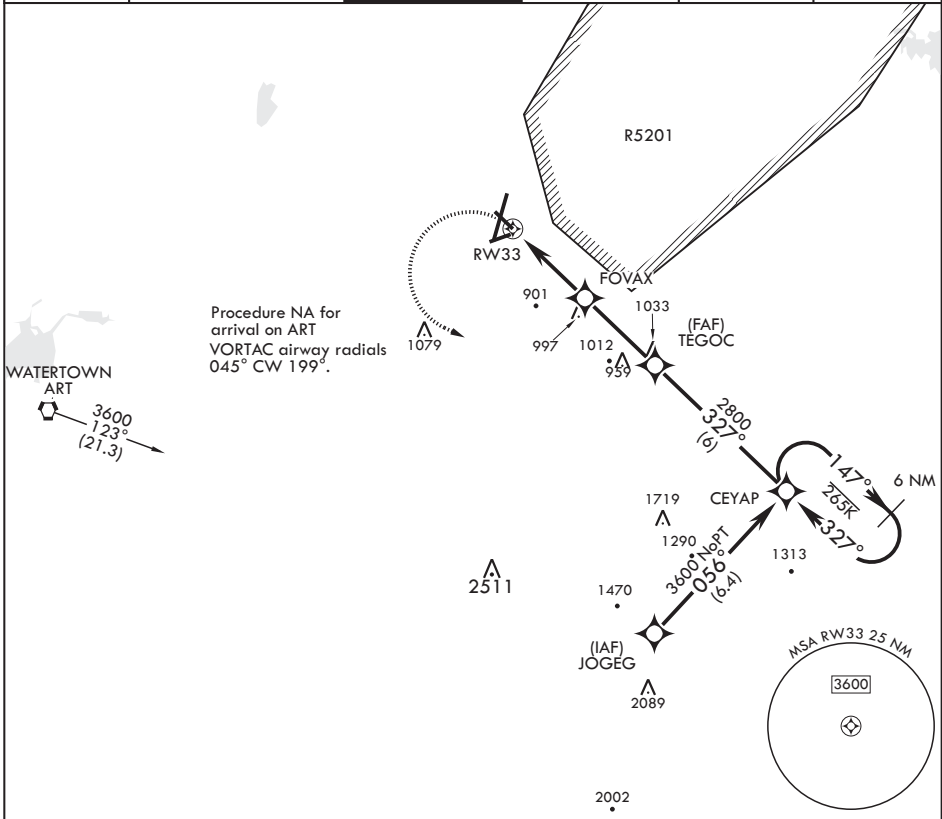
WHEELER SACK AAF (KGTB)

RNP APCH - GPS

MISSED APPROACH: Climbing left turn to 3600 direct CEYAP and hold.

* LNAV visibility reduction by helicopters NA.
 ** Circling NA for CAT BCD to Rwy 8. Circling NA E of Rwy 21 and 33.

ATIS 119.525	APP CON/DEP CON 124.875 307.125	TOWER 118.75 290.25	GND CON 121.9 229.8	CLNC DEL 121.9	ASR/PAR
-----------------	------------------------------------	------------------------	------------------------	-------------------	---------



3600	CEYAP	ELEV 690	TDZE 690	
CATEGORY	A	B	C	D
LNAV MDA*	1200-1 510 (600-1)	1240-1 510 (600-1)	1200-1½ 510 (600-1½)	1460-2½ 510 (600-1½)
CIRCLING**	1200-1 510 (600-1)	1240-1 550 (600-1)	1280-1½ 590 (600-1½)	1460-2½ 770 (800-2½)

HIRL Rwy 3-21, 15-33
 MIRL Rwy 8-26
 RAIL Rwy 15

RNAV (GPS) RWY 33

NE-2, 30 NOV 2023 to 28 DEC 2023

NE-2, 30 NOV 2023 to 28 DEC 2023