

LOC I-UGZ 111.9	APP CRS 227°	Rwy Idg TDZE Apt Elev	5501 134 134
---------------------------	------------------------	-----------------------------	---

ILS or LOC RWY 23

WAYNE EXEC JETPORT (GWW)

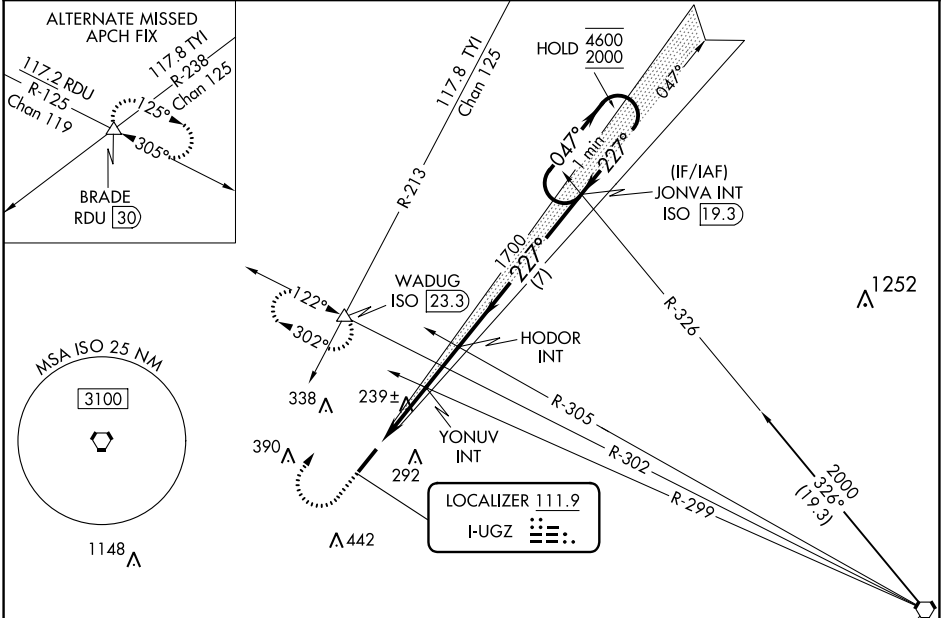
DME or RADAR required.

⚠ When local altimeter setting not received, use Smithfield altimeter setting and increase DA to 388 and all MDAs 60 feet, increase S-LOC Cats C/D visibility ¼ SM, Circling Cats C/D ½ SM. Inop table does not apply to S-ILS 23.

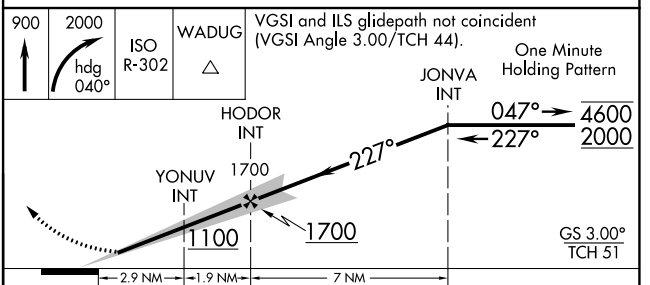
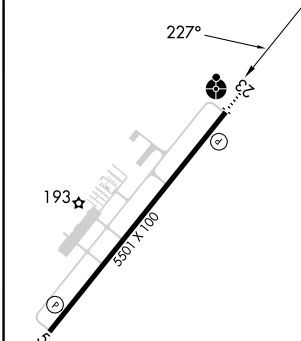
ODALS

MISSED APPROACH: Climb to 900 then climbing right turn to 2000 on heading 040° and on ISO VORTAC R-302 to WADUG INT/ISO 23.3 DME and hold.

AWOS-3P 118.975	SEYMOUR JOHNSON APP CON ★ 121.175 290.9	UNICOM 122.975 (CTAF) 0
---------------------------	---	-----------------------------------



ELEV 134	TDZE 134
----------	----------



CATEGORY	A	B	C	D
S-ILS 23	334-¾ 200 (200-¾)			
S-LOC 23	500-¾ 366 (400-¾)	500-1 366 (400-1)		
CIRCLING	580-1 446 (500-1)	640-1 506 (600-1)	760-1¾ 626 (700-1¾)	760-2 626 (700-2)

SE-2, 30 NOV 2023 to 28 DEC 2023

SE-2, 30 NOV 2023 to 28 DEC 2023