

| | | |
|--|------------------------|---|
| WAAS CH 61017 W02A | APP CRS 015° | Rwy Idg 5500 TDZE 978 Apt Elev 984 |
|--|------------------------|---|

RNAV (GPS) RWY 2

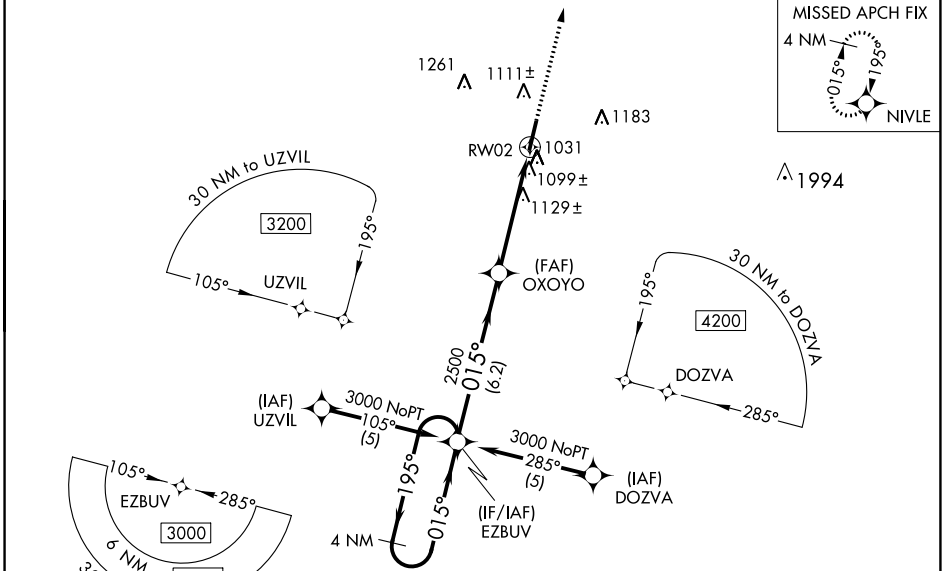
FAYETTEVILLE MUNI (FYM)

RNP APCH - GPS.

Baro-VNAV and VDP NA when using Huntsville Exec Tom Sharp Jr fld altimeter setting. For uncompensated Baro-VNAV systems, LNAV/VNAV NA below -16°C (4°F) or above 46°C (114°F). Rwy 2 helicopter visibility reduction below ¼ SM NA. When local altimeter setting not received use Huntsville Exec Tom Sharp Jr fld altimeter setting and increase LPV DA to 1341 feet and all visibilities ¼ SM; LNAV/VNAV DA to 1519 feet and all visibilities ½ SM; increase all MDAs 120 feet and LNAV Cat C and Circling Cat D visibility ¼ SM, LNAV Cat D and Circling Cat C visibility ½ SM.

MISSED APPROACH: Climb to 3000 direct NIVLE and hold.

| | | | |
|--------------------------|--|----------------------------------|---------------------------------|
| AWOS-3 135.275 | HUNTSVILLE APP CON * 125.6 354.1 | CLNC DEL (GCO) 121.725 | UNICOM 122.8 (CTAF) 0 |
|--------------------------|--|----------------------------------|---------------------------------|

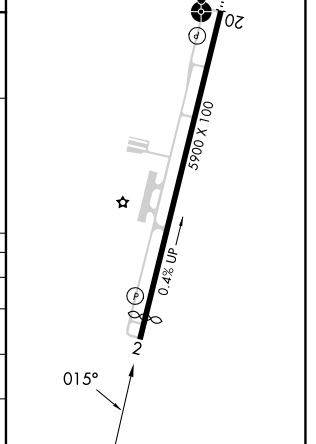
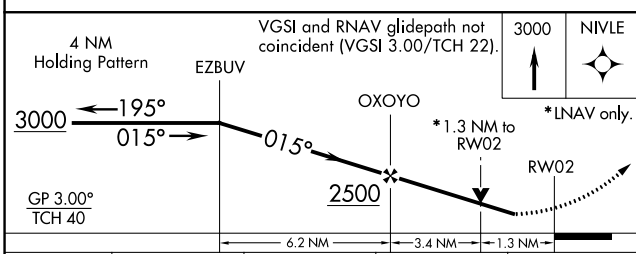


SE-1, 30 NOV 2023 to 28 DEC 2023

SE-1, 30 NOV 2023 to 28 DEC 2023

| | |
|----------|----------|
| ELEV 984 | TDZE 978 |
|----------|----------|

MIRL Rwy 2-20
REIL Rwys 2 and 20



| CATEGORY | A | B | C | D |
|--------------|-----------------------|-----------------------|-------------------------|-----------------------|
| LPV DA | | 1228-1 | 250 (300-1) | |
| LNAV/VNAV DA | | 1406-1½ | 428 (500-1½) | |
| LNAV MDA | 1380-1 | 402 (400-1) | 1380-1¼ | 402 (400-1¼) |
| CIRCLING | 1420-1 436 (500-1) | 1540-1 556 (600-1) | 1580-1½ 596 (600-1½) | 1580-2 596 (600-2) |