

| | | | |
|--|------------------------|-----------------------------|---|
| WAAS CH 99510 W10A | APP CRS 102° | Rwy Idg TDZE Apt Elev | 5506 1014 1014 |
|--|------------------------|-----------------------------|---|

RNAV (GPS) RWY 10

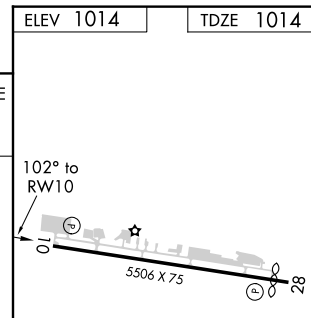
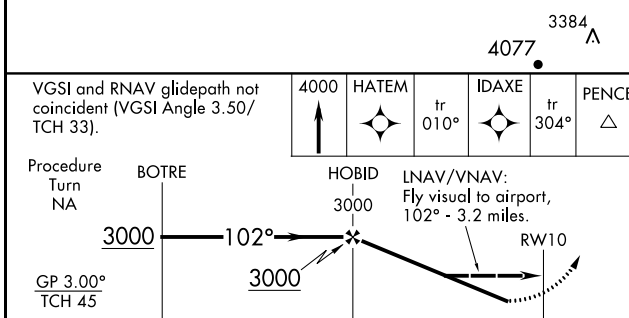
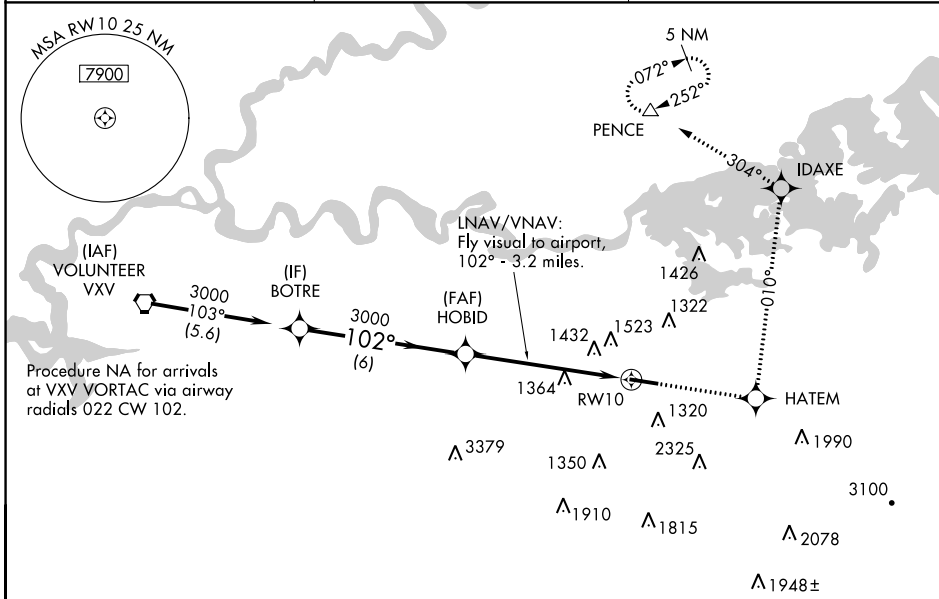
GATLINBURG-PIGEON FORGE (GKT)

RNP APCH - GPS.

▽ LNAV/VNAV NA when using Mc Ghee Tyson altimeter setting. For uncompensated Baro-VNAV systems, LNAV/VNAV NA below -17°C or above 47°C. Helicopter visibility reduction below 3/4 SM NA. When local altimeter setting not received, use Mc Ghee Tyson altimeter setting; increase LPV DA to 1425 feet, and all visibilities 1/2 SM; increase all MDAs 60 feet and Circling visibility Cat A 1/2 SM. Circling to Rwy 28 NA at night. Procedure NA at night.

MISSED APPROACH: Climb to 4000 direct HATEM and via 010° track to IDAXE and via 304° track to PENCE and hold.

| | | |
|--------------------------|---|---------------------------------|
| AWOS-3 126.875 | KNOXVILLE APP CON 132.8 360.8 | UNICOM 123.0 (CTAF) 0 |
|--------------------------|---|---------------------------------|



| CATEGORY | A | B | C | D |
|---------------|-----------------------|-------------------------|-------------------------|-------------------------|
| LPV DA | 1371-1¼ | | 357 (400-1¼) | |
| LNAV/ VNAV DA | 2013-2 | 999 (1000-2) | 2013-3 | 999 (1000-3) |
| LNAV MDA | 1800-1 786 (800-1) | 1800-1¼ 786 (800-1¼) | 1800-2¼ 786 (800-2¼) | 1800-2½ 786 (800-2½) |
| CIRCLING | 1800-1 786 (800-1) | 1880-1¼ 866 (900-1¼) | 2040-3 1026 (1100-3) | 2680-3 1666 (1700-3) |

REIL Rwy 10 and 28
MIRL Rwy 10-28 0

SE-1, 30 NOV 2023 to 28 DEC 2023

SE-1, 30 NOV 2023 to 28 DEC 2023