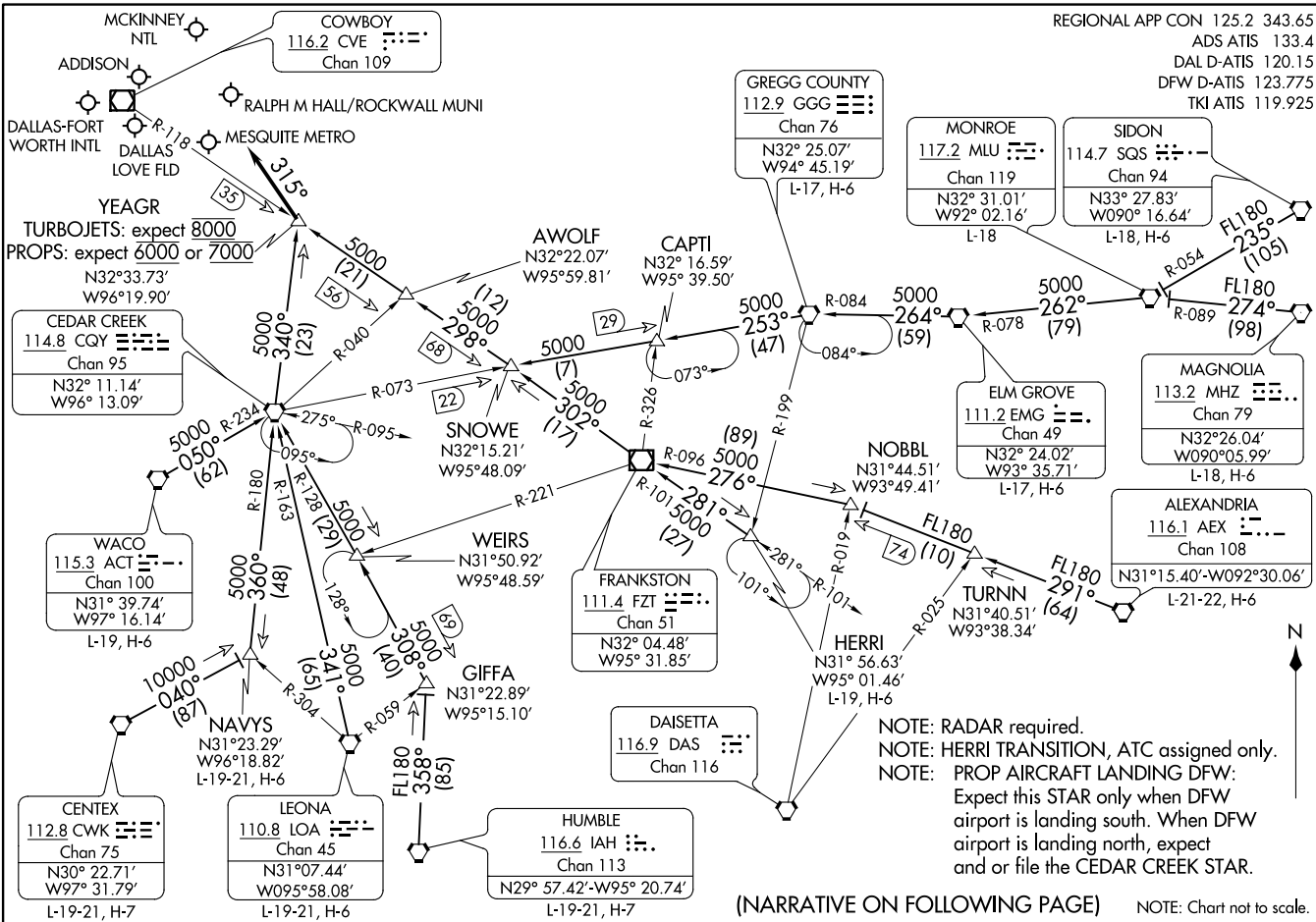


YEAGR.YEAGR4) 21MAY20

YEAGR FOUR ARRIVAL

DALLAS-FORT WORTH, TEXAS



REGIONAL APP CON 125.2 343.65
 ADS ATIS 133.4
 DAL D-ATIS 120.15
 DFW D-ATIS 123.775
 TKI ATIS 119.925

YEAGR.YEAGR4) 23054

DALLAS-FORT WORTH, TEXAS

AL-6039 (FAA)

(NARRATIVE ON FOLLOWING PAGE)

NOTE: Chart not to scale.

YEAGR FOUR ARRIVAL

DALLAS-FORT WORTH, TEXAS

ARRIVAL ROUTE DESCRIPTION

ALEXANDRIA TRANSITION (AEX.YEAGR4): From over AEX VORTAC on AEX R-291 to NOBBL, then on FZT R-096 to FZT VOR/DME, then on FZT R-302 to SNOWE, then on CVE R-118 to YEAGR. Thence. . . .

CENTEX TRANSITION (CWK.YEAGR4): From over CWK VORTAC on CWK R-040 to NAVYS, then on CQY R-180 to CQY VORTAC, then on CQY R-340 to YEAGR. Thence. . . .

ELM GROVE TRANSITION (EMG.YEAGR4): From over EMG VORTAC on EMG R-264 and GGG R-084 to GGG VORTAC, then on GGG R-253 and CQY R-073 to CAPTI, then on CQY R-073 to SNOWE, then on CVE R-118 to YEAGR. Thence. . . .

GREGG COUNTY TRANSITION (GGG.YEAGR4): From over GGG VORTAC on GGG R-253 and CQY R-073 to CAPTI, then on CQY R-073 to SNOWE, then on CVE R-118 to YEAGR. Thence. . . .

GIFFA TRANSITION (GIFFA.YEAGR4): From over GIFFA on CQY R-128 to CQY VORTAC, then on CQY R-340 to YEAGR. Thence. . . .

HERRI TRANSITION (HERRI.YEAGR4): From over HERRI on FZT R-101 to FZT VOR/DME, then on FZT R-302 to SNOWE, then on CVE R-118 to YEAGR. Thence. . . .

HUMBLE TRANSITION (IAH.YEAGR4): From over IAH VORTAC on IAH R-358 to GIFFA, then on CQY R-128 to CQY VORTAC, then on CQY R-340 to YEAGR. Thence. . . .

LEONA TRANSITION (LOA.YEAGR4): From over LOA VORTAC on LOA R-341 and CQY R-163 to CQY VORTAC, then on CQY R-340 to YEAGR. Thence. . . .

MAGNOLIA TRANSITION (MHZ.YEAGR4): From over MHZ VORTAC on MHZ R-274 and MLU R-089 to MLU VORTAC, then on MLU R-262 and EMG R-078 to EMG VORTAC, then on EMG R-264 and GGG R-084 to GGG VORTAC, then on GGG R-253 and CQY R-073 to CAPTI, then on CQY R-073 to SNOWE, then on CVE R-118 to YEAGR. Thence. . . .

MONROE TRANSITION (MLU.YEAGR4): From over MLU VORTAC on MLU R-262 and EMG R-078 to EMG VORTAC, then on EMG R-264 and GGG R-084 to GGG VORTAC, then on GGG R-253 and CQY R-073 to CAPTI, then on CQY R-073 to SNOWE, then on CVE R-118 to YEAGR. Thence. . . .

NAVYS TRANSITION (NAVYS.YEAGR4): From over NAVYS on CQY R-180 to CQY VORTAC, then on CQY R-340 to YEAGR. Thence. . . .

SIDON TRANSITION (SQS.YEAGR4): From over SQS VORTAC on SQS R-235 and MLU R-054 to MLU VORTAC, then on MLU R-262 and EMG R-078 to EMG VORTAC, then on EMG R-264 and GGG R-084 to GGG VORTAC, then on GGG R-253 and CQY R-073 to CAPTI, then on CQY R-073 to SNOWE, then on CVE R-118 to YEAGR. Thence. . . .

WACO TRANSITION (ACT.YEAGR4): From over ACT VORTAC on ACT R-050 and CQY R-234 to CQY VORTAC, then on CQY R-340 to YEAGR. Thence. . . .

. . . from over YEAGR, depart heading 315° or as assigned by ATC.
Expect RADAR vectors to final.

SC-2, 30 NOV 2023 to 28 DEC 2023

SC-2, 30 NOV 2023 to 28 DEC 2023

YEAGR FOUR ARRIVAL

DALLAS-FORT WORTH, TEXAS