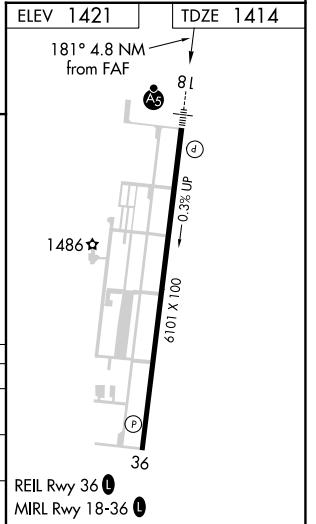
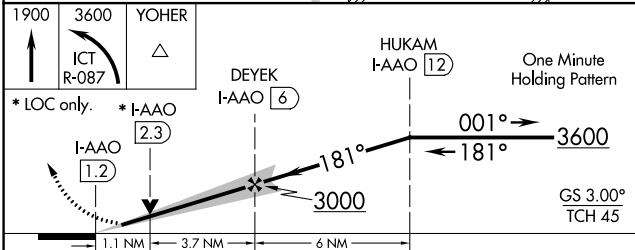
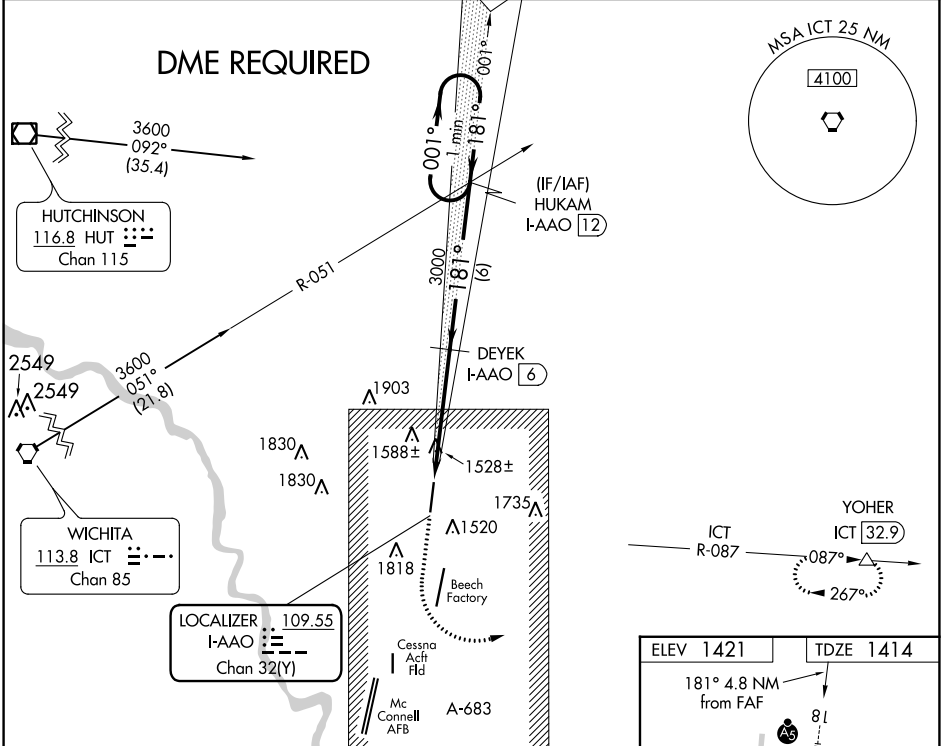


LOC/DME I-AAO <b>109.55</b> Chan 32 (Y)	APP CRS <b>181°</b>	Rwy Idg TDZE Apt Elev	<b>6101</b> <b>1414</b> <b>1421</b>
---	------------------------	-----------------------------	---

**ILS or LOC RWY 18**  
COLONEL JAMES JABARA (A.A.O)

<p>DME required.</p>	<p>MALSR</p>	<p>MISSED APPROACH: Climb to 1900 then climbing left turn to 3600 on ICT VORTAC R-087° to YOHER/ICT 32.9 DME and hold.</p>	
ASOS <b>134.025</b>	WICHITA APP CON <b>134.8 269.1</b>	CLNC DEL <b>125.0</b>	UNICOM <b>122.7 (CTAF) 0</b>



CATEGORY	A	B	C	D
S-ILS 18	1614-1/2		200 (200-1/2)	
S-LOC 18	1800-1/2	386 (400-1/2)	1800-5/8 386 (400-3/8)	1800-3/4 386 (400-3/4)
CIRCLING	1880-1 459 (500-1)	1940-1 519 (600-1)	2120-2 699 (700-2)	2220-2-1/2 799 (800-2-1/2)

NC-2, 30 NOV 2023 to 28 DEC 2023

NC-2, 30 NOV 2023 to 28 DEC 2023