

WAAS CH <b>86208</b> <b>W36A</b>	APP CRS <b>001°</b>	Rwy Idg <b>6101</b> TDZE <b>1421</b> Apt Elev <b>1421</b>
--	------------------------	---

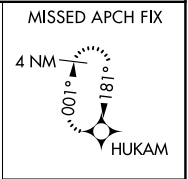
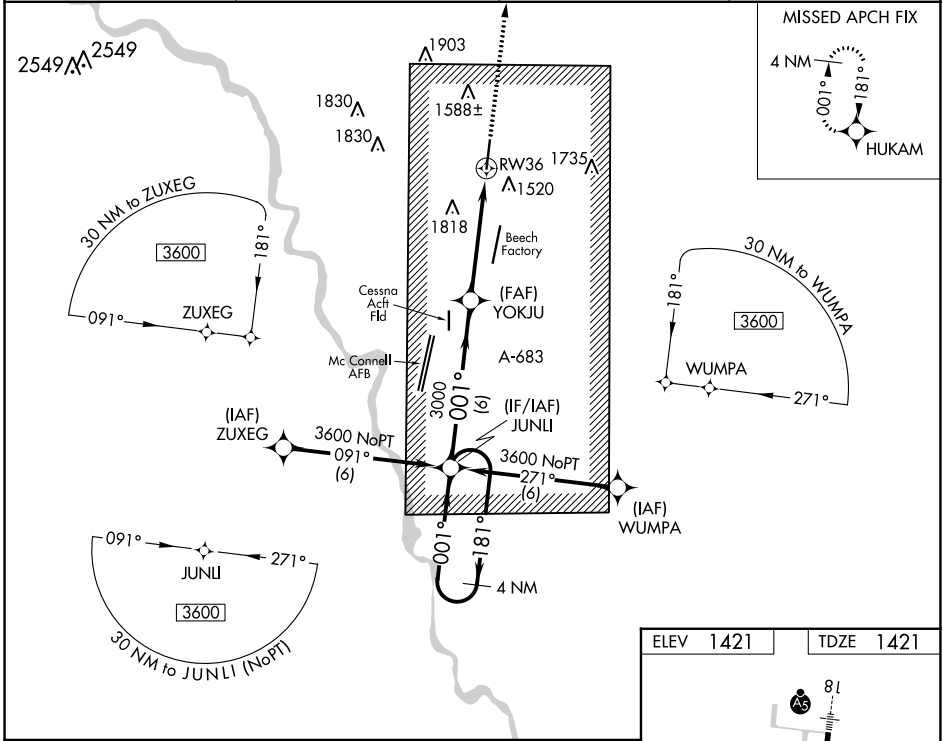
# RNAV (GPS) RWY 36

COLONEL JAMES JABARA (A.A.O)

**⚠** DME/DME RNP-0.3 NA. Visibility reduction by helicopters NA. When local altimeter setting not received, use Wichita Dwight D Eisenhower Ntl altimeter setting: increase LPV DA to 1780 and all LPV visibilities ¼ SM; increase all MDAs 40 feet; increase LNAV Cats C and D visibilities ½ SM; increase Circling Cat D visibility ¼ SM. VDP NA with Wichita Dwight D Eisenhower Ntl altimeter setting.

**MISSED APPROACH:** Climb to 3600 direct HUKAM and hold.

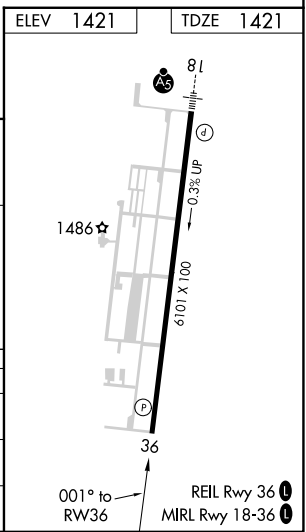
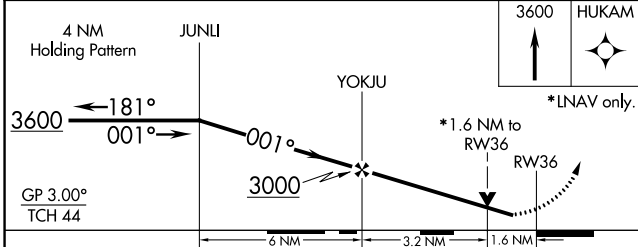
ASOS <b>134.025</b>	WICHITA APP CON <b>134.8 269.1</b>	CLNC DEL <b>125.0</b>	UNICOM <b>122.7 (CTAF) ①</b>
------------------------	---------------------------------------	--------------------------	---------------------------------



NC-2, 30 NOV 2023 to 28 DEC 2023

NC-2, 30 NOV 2023 to 28 DEC 2023

ELEV 1421	TDZE 1421
-----------	-----------



CATEGORY	A	B	C	D
LPV DA	1740-1 319 (400-1)			
LNAV MDA	1960-1	539 (600-1)	1960-1½ 539 (600-1½)	1960-1¾ 539 (600-1¾)
CIRCLING	1960-1	539 (600-1)	2120-2 699 (700-2)	2220-2½ 799 (800-2½)