

GARLAND FOUR DEPARTURE  
(GARL4.TT) 29DEC22

RALEIGH M HALL/ROCKWALL MUNI (F46)  
ROCKWALL, TEXAS

CTAF  
122.8  
REGIONAL DEP CON  
125.2 343.65

RADAR and DME required.

TAKEOFF MINIMUMS  
Rwys 17, 35: Standard.

NOTE: SOLDO Transition: ATC assigned.

(NARRATIVE ON FOLLOWING PAGE)

MAVERICK  
113.1 TTT  
Chan 78  
N32°52.15'-W97°02.43'

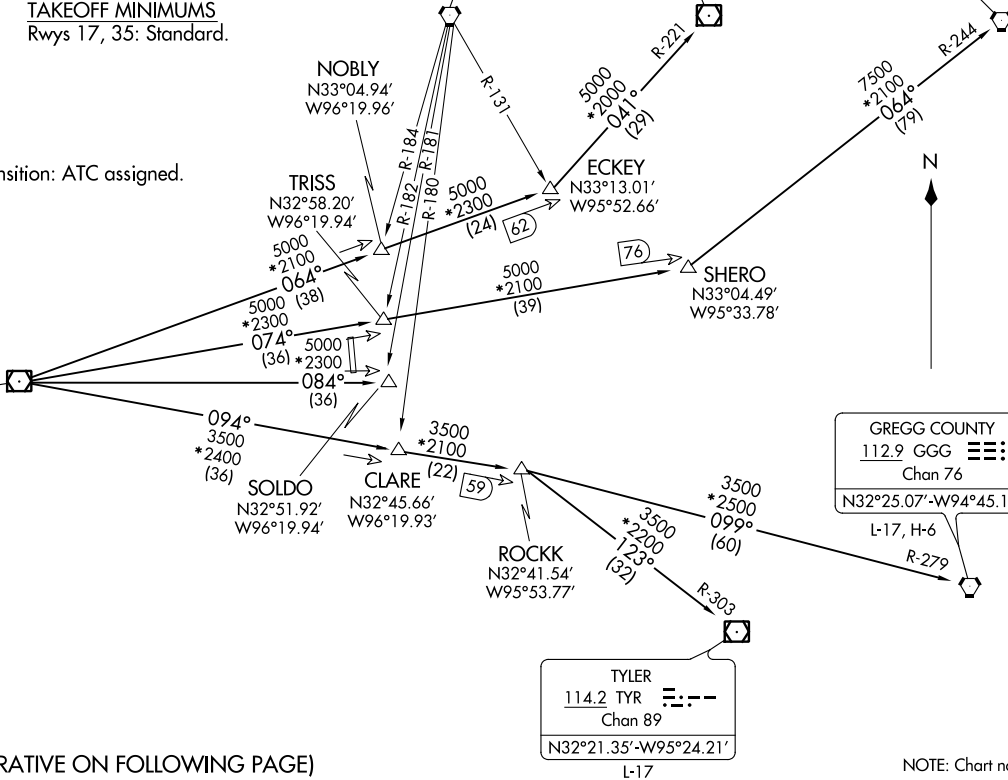
BONHAM  
114.6 BYP  
Chan 93

PARIS  
113.6 PRX  
Chan 83  
N33°32.54'-W95°26.90'  
L-17

TEXARKANA  
116.3 TXK  
Chan 110  
N33°30.83'-W94°04.39'  
L-17, H-6

GREGG COUNTY  
112.9 GGG  
Chan 76  
N32°25.07'-W94°45.19'  
L-17, H-6

TYLER  
114.2 TYR  
Chan 89  
N32°21.35'-W95°24.21'  
L-17



(GARL4.TT) 22363  
GARLAND FOUR DEPARTURE

AL-6323 (FAA)  
RALEIGH M HALL/ROCKWALL MUNI (F46)  
ROCKWALL, TEXAS

NOTE: Chart not to scale.

# GARLAND FOUR DEPARTURE



## DEPARTURE ROUTE DESCRIPTION

When entering controlled airspace, fly assigned heading and altitude, for vector to appropriate route.

GREGG COUNTY TRANSITION (GARL4.GGG): From over TTT VOR/DME on TTT R-094 to ROCKK, then on GGG R-279 to GGG VORTAC.

PARIS TRANSITION (GARL4.PRX): From over TTT VOR/DME on TTT R-064 to ECKEY, then on PRX R-221 to PRX VOR/DME.

SOLDO TRANSITION (GARL4.SOLDO): From over TTT VOR/DME on TTT R-084 to SOLDO.

TEXARKANA TRANSITION (GARL4.TXK): From over TTT VOR/DME on TTT R-074 to SHERO, then on TXK R-244 to TXK VORTAC.

TYLER TRANSITION (GARL4.TYR): From over TTT VOR/DME on TTT R-094 to ROCKK, then on TYR R-303 to TYR VOR/DME.

SC-2, 30 NOV 2023 to 28 DEC 2023

SC-2, 30 NOV 2023 to 28 DEC 2023