

APP CRS 347°	Rwy Idg 3084
	TDZE 574
	Apt Elev 574

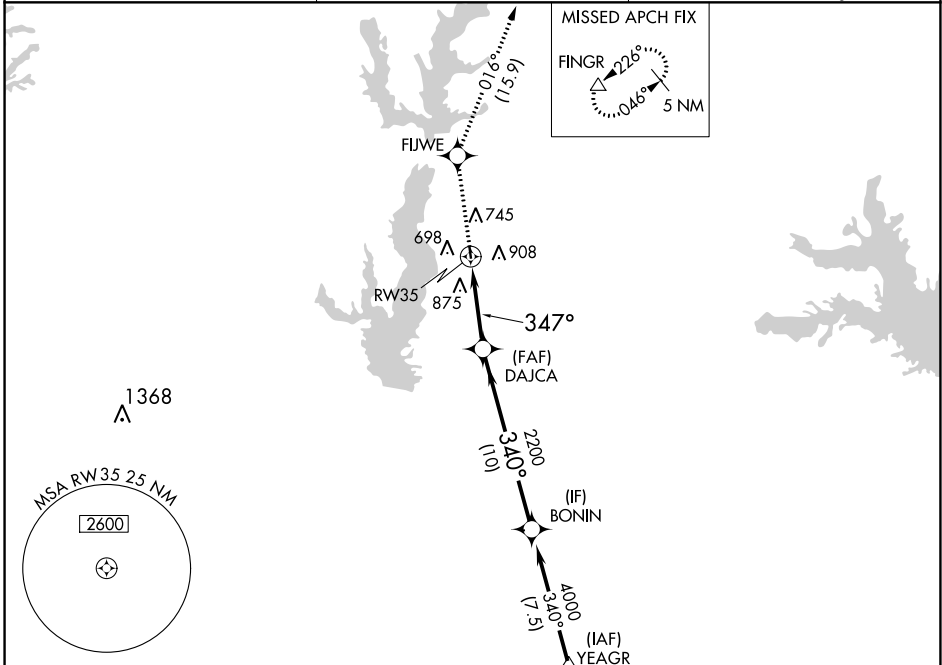
RNAV (GPS) RWY 35

RALPH M HALL/ROCKWALL MUNI (F46)

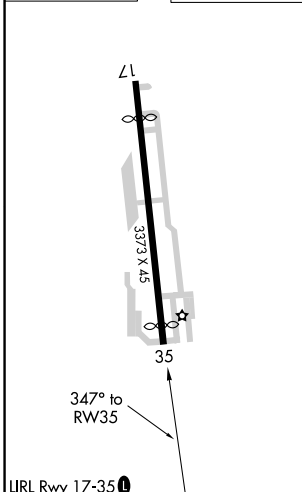
⚠ DME/DME RNP-0.3 NA. When local altimeter setting not received, use Dallas Love Fld altimeter setting and increase all MDA 80 feet.
⚠ Helicopter visibility reduction below 1 SM NA. Procedure NA at night.

MISSED APPROACH: Climb to 5000 direct FIJWE and on track 016° to FINGR and hold.

AWOS-3PT 121.25	REGIONAL APP CON 124.3 282.275	UNICOM 122.8 (CTAF) ①
---------------------------	--	---------------------------------

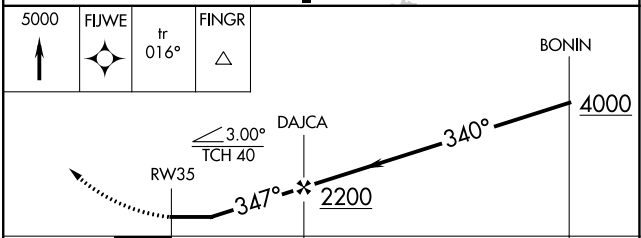


ELEV 574	TDZE 574
----------	----------



ROCKWALL, TEXAS
 Orig-C 30APR15

Procedure NA for arrival on CQY VORTAC airway radials 263 CW 040.



CATEGORY	A	B	C	D
LNAV MDA	1200-1	626 (700-1)	NA	
CIRCLING	1280-1	706 (800-1)	NA	

SC-2, 30 NOV 2023 to 28 DEC 2023

SC-2, 30 NOV 2023 to 28 DEC 2023