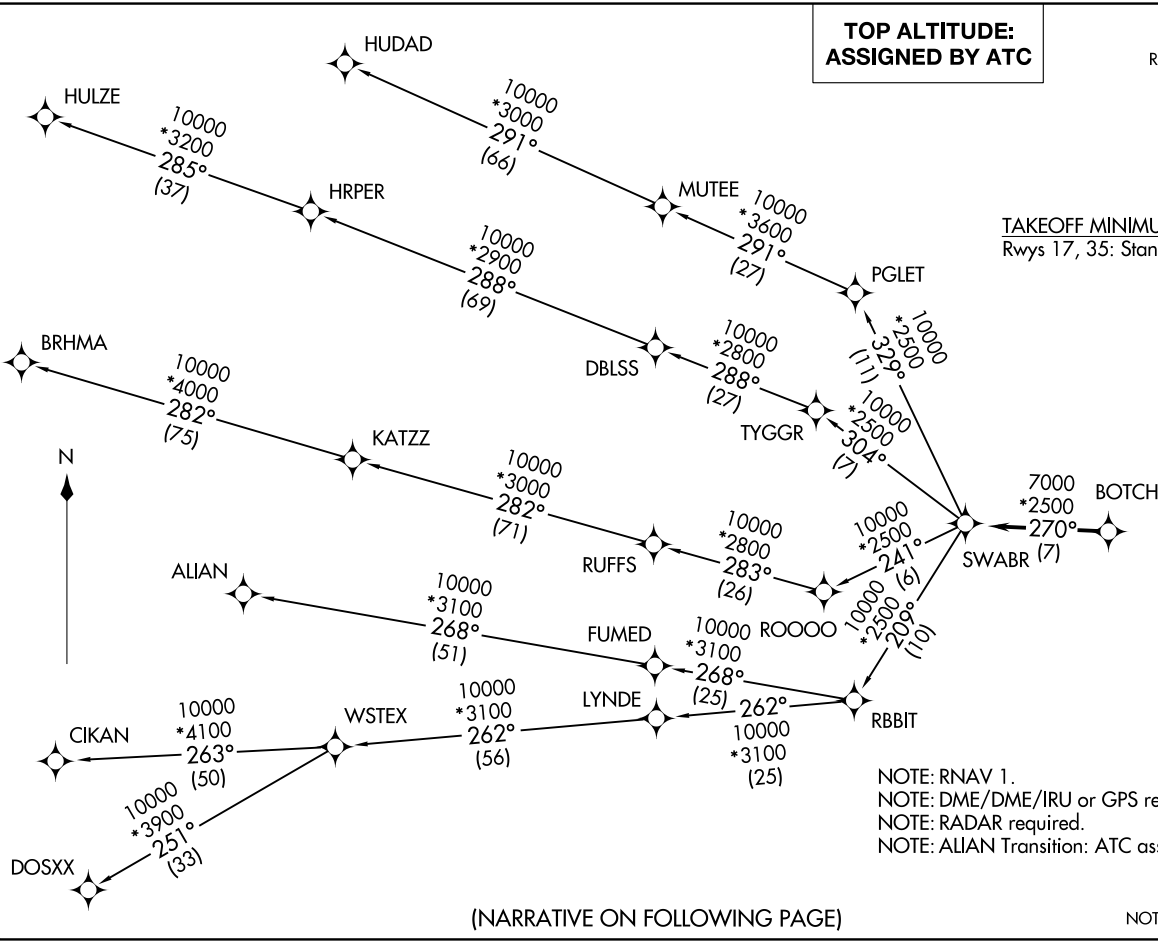


CTAF
 122.8
 REGIONAL DEP CON
 124.3 282.275

**TOP ALTITUDE:
 ASSIGNED BY ATC**

TAKEOFF MINIMUMS
 Rwy's 17, 35: Standard.



NOTE: RNAV 1.
 NOTE: DME/DME/IRU or GPS required.
 NOTE: RADAR required.
 NOTE: ALIAN Transition: ATC assigned only.

(NARRATIVE ON FOLLOWING PAGE)

NOTE: Chart not to scale.

SWABR ONE DEPARTURE (RNAV)



DEPARTURE ROUTE DESCRIPTION

When entering controlled airspace, fly heading assigned by ATC, expect vectors to BOTCH, then on track 270° to SWABR, then on assigned transition. Maintain ATC assigned altitude, expect filed altitude 10 minutes after departure.

ALIAN TRANSITION (SWABR1.ALIAN)

BRHMA TRANSITION (SWABR1.BRHMA)

CIKAN TRANSITION (SWABR1.CIKAN)

DOSXX TRANSITION (SWABR1.DOSXX)

HUDAD TRANSITION (SWABR1.HUDAD)

HULZE TRANSITION (SWABR1.HULZE)

WSTEX TRANSITION (SWABR1.WSTEX)

SC-2, 30 NOV 2023 to 28 DEC 2023

SC-2, 30 NOV 2023 to 28 DEC 2023