

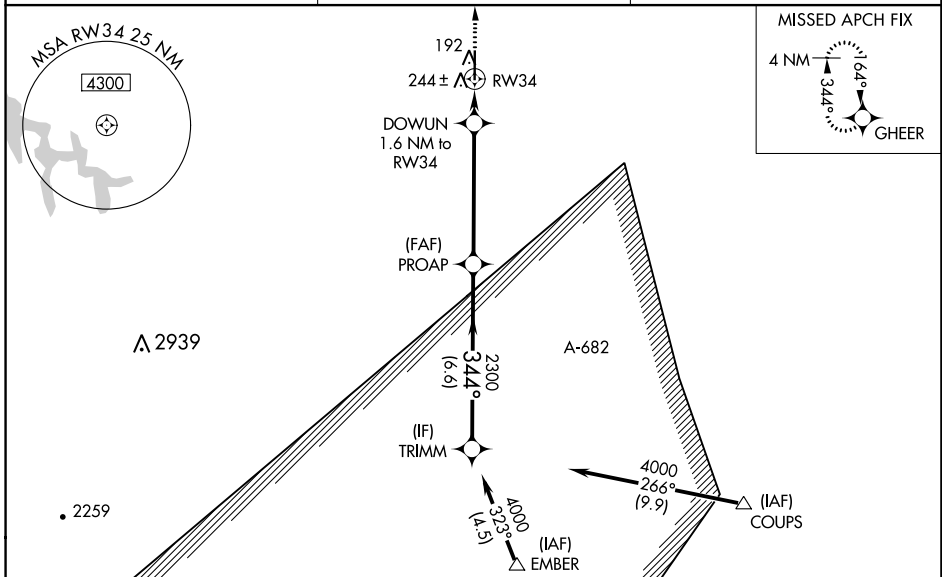
WAAS CH <b>58319</b> <b>W34A</b>	APP CRS <b>344°</b>	Rwy Idg TDZE Apt Elev	<b>6000</b> <b>100</b> <b>100</b>
--	------------------------	-----------------------------	---

# RNAV (GPS) RWY 34

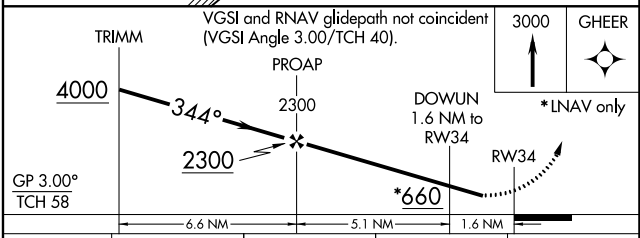
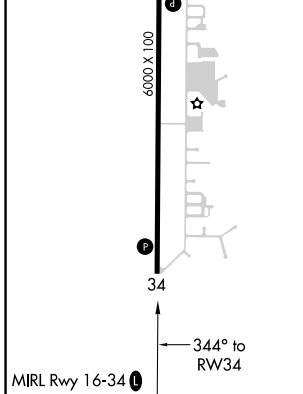
YOLO COUNTY (DWA)

RNP APCH.	<p>When local altimeter setting not received, use Travis AFB altimeter setting and increase all DA 50 feet and all MDA 60 feet, and increase LPV visibility all Cats ½ mile, LNAV/VNAV visibility all Cats ¼ mile, and LNAV Cat C and D visibility ¼ mile. For uncompensated Baro-VNAV systems, LNAV/VNAV NA below -15°C (5°F) or above 42°C (107°F). Baro-VNAV NA when using Travis AFB altimeter setting.</p>	<p>MISSED APPROACH: Climb to 3000 direct GHEER and hold.</p>
-----------	---	--

AWOS-3P <b>125.775</b>	TRAVIS APP CON <b>126.6 281.45</b>	UNICOM <b>123.0 (CTAF)</b>
---------------------------	---------------------------------------	-------------------------------



ELEV 100	TDZE 100
----------	----------



CATEGORY	A	B	C	D
LPV DA		415-1	315 (400-1)	
LNAV/VNAV DA		425-1	325 (400-1)	
LNAV MDA	500-1	400 (400-1)	500-1½	400 (400-1½)