

WAAS CH <b>73022</b> W <b>32A</b>	APP CRS <b>323°</b>	Rwy Idg <b>4600</b> TDZE <b>1145</b> Apt Elev <b>1145</b>
---	------------------------	---

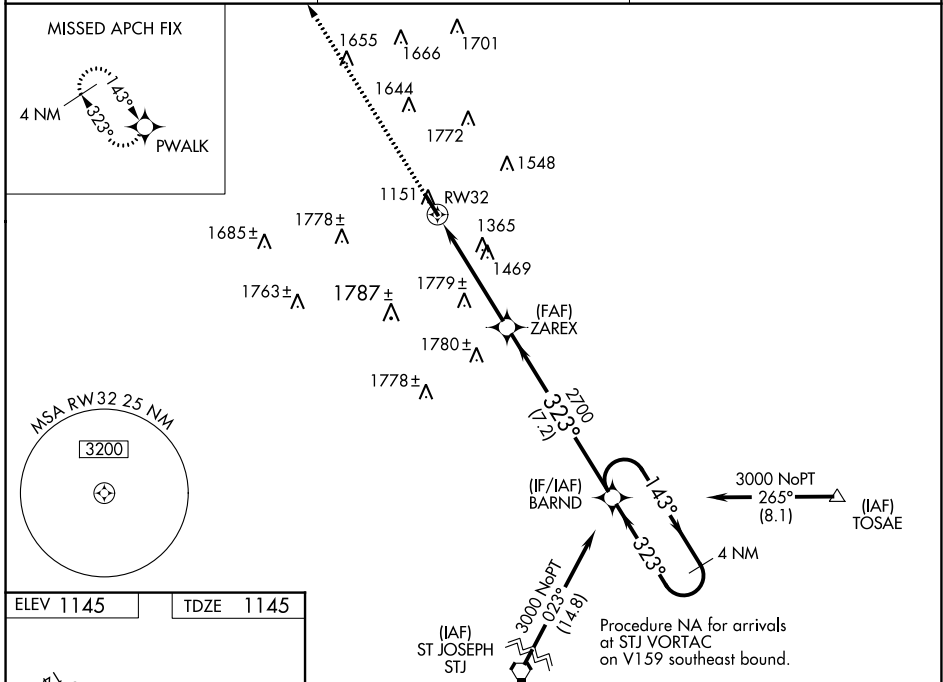
# RNAV (GPS) RWY 32

NORTHWEST MISSOURI RGNL (EVU)

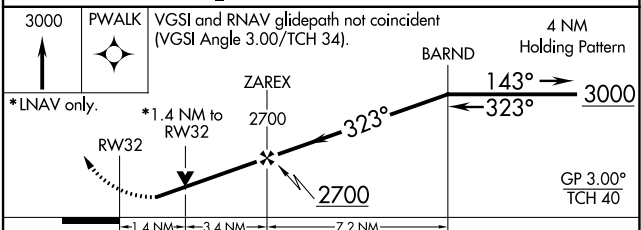
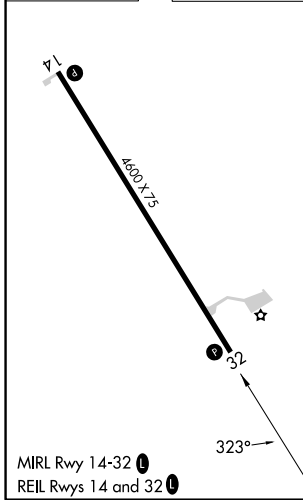
**NA** Baro-VNAV NA when using St Joseph altimeter setting. For uncompensated Baro-VNAV systems, LNAV/VNAV NA below -17°C (2°F) or above 54°C (130°F). DME/DME RNP-0.3 NA. Helicopter visibility reduction below 3/4 SM NA. When local altimeter setting not received, use St Joseph altimeter setting: increase all DAs to 1520 feet and all visibilities 3/8 SM; increase all MDAs 140 feet and LNAV visibility Cat C 3/8 SM. VDP NA when using St Joseph altimeter setting. Circling NA east of Rwy 14-32.

**MISSED APPROACH:**  
Climb to 3000 direct PWALK and hold.

AWOS-3PT <b>118.225</b>	MINNEAPOLIS CENTER <b>119.6 290.4</b>	UNICOM <b>122.8 (CTAF) 1</b>
----------------------------	--	---------------------------------



ELEV 1145	TDZE 1145
-----------	-----------



CATEGORY	A	B	C	D
LPV DA	1395-7/8	250 (300-7/8)		NA
LNAV/VNAV DA	1395-7/8	250 (300-7/8)		NA
LNAV MDA	1620-1	475 (500-1)	1620-1 3/8 475 (500-1 3/8)	NA
CIRCLING	1620-1	475 (500-1)	2120-3 975 (1000-3)	NA

NC-3, 30 NOV 2023 to 28 DEC 2023

NC-3, 30 NOV 2023 to 28 DEC 2023