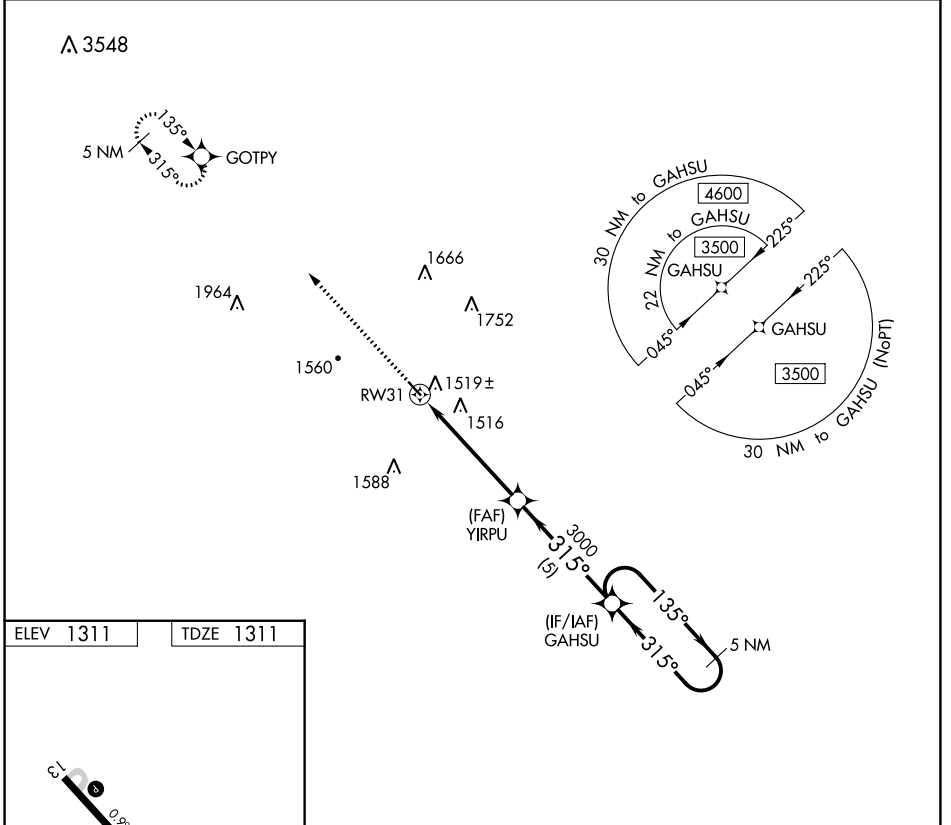


APP CRS	Rwy Idg	3634
315°	TDZE	1311
	Apt Elev	1311

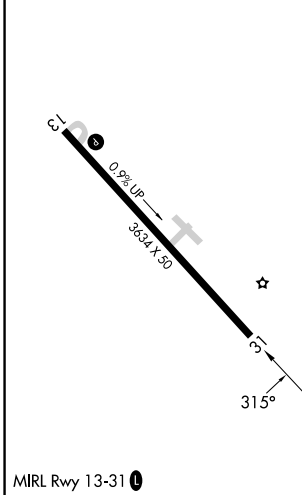
RNAV (GPS) RWY 31

AVA BILL MARTIN MEML (AOV)

RNP APCH.		MISSED APPROACH: Climb to 4600 direct GOTPY and hold, continue climb-in-hold to 4600.
<p>⚠ Procedure NA at night. Rwy 31 helicopter visibility reduction below 1 SM NA.</p> <p>⚠ NA Use Branson altimeter setting, if not received use Springfield Branson Natl altimeter setting and increase all MDA 20 feet.</p>		
BBG AWOS-3 124.625	SPRINGFIELD APP CON 126.35	UNICOM 122.7 (CTAF) 0



ELEV 1311	TDZE 1311
-----------	-----------



4600	GOTPY	Visual Segment - Obstacles.		GAHSU	5 NM Holding Pattern
↑	⬠	YIRPU			
		RW31	3000	315°	135° → 3500
		5.2 NM	5 NM	← 315°	
CATEGORY	A	B	C	D	
LNAV MDA	1860-1	549 (600-1)			NA

NC-3, 30 NOV 2023 to 28 DEC 2023

NC-3, 30 NOV 2023 to 28 DEC 2023