

IZZ0 SEVEN DEPARTURE (RNAV)

AL-6646 (FAA)

PHOENIX DEER VALLEY (DVT)
PHOENIX, ARIZONA

SW-4, 30 NOV 2023 to 28 DEC 2023

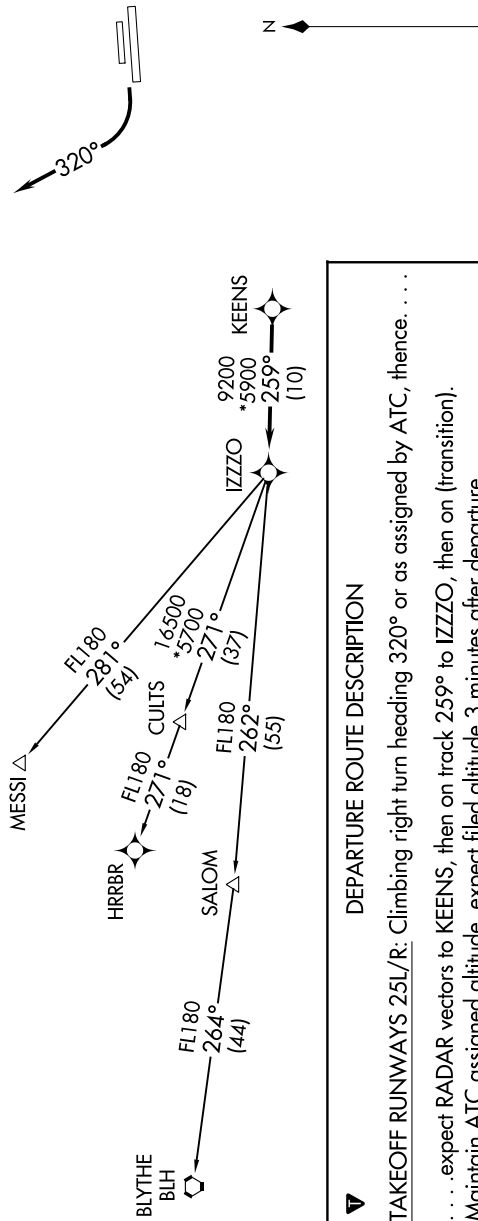
TOP ALTITUDE: ASSIGNED BY ATC

ATIS 126.5
 CLNC DEL 123.9
 GND CON 121.8
 DEER VALLEY TOWER* 118.4 (Rwy 7R-25L)
 120.2 (Rwy 7L-25R)
 PHOENIX DEP CON 120.7 239.0

NOTE: RNAV 1.
 NOTE: Turbojets and turboprops only.
 NOTE: RADAR required.
 NOTE: GPS required.
 NOTE: Aircraft requesting FL220 and below must file BLYTHE TRANSITION.
 NOTE: Turbojets landing LAX, file MESSI TRANSITION.
 NOTE: Aircraft landing other than LAX and turboprops landing at LAX: Requesting FL240 and above, file HRRBR TRANSITION.
 NOTE: Aircraft departing KGEU and KGYR ATC assigned only.

TAKEOFF MINIMUMS

Rwys 7L/R: NA - Obstacles.
 Rwys 25L/R: Standard with minimum climb of 370' per NM to 4600.



NOTE: Chart not to scale.

DEPARTURE ROUTE DESCRIPTION

TAKEOFF RUNWAYS 25L/R: Climbing right turn heading 320° or as assigned by ATC, thence
 expect RADAR vectors to KEENS, then on track 259° to IZZO, then on (transition).
 Maintain ATC assigned altitude, expect filed altitude 3 minutes after departure.

- BLYTHE TRANSITION (IZZ07.BLH)
- HRRBR TRANSITION (IZZ07.HRRBR)
- MESSI TRANSITION (IZZ07.MESSI)

IZZ0 SEVEN DEPARTURE (RNAV)

SW-4, 30 NOV 2023 to 28 DEC 2023