

WAAS CH <b>90117</b> <b>W25A</b>	APP CRS <b>254°</b>	Rwy Idg TDZE Apt Elev	<b>7281</b> <b>1475</b> <b>1478</b>
--	------------------------	-----------------------------	---

# RNAV (GPS) RWY 25L

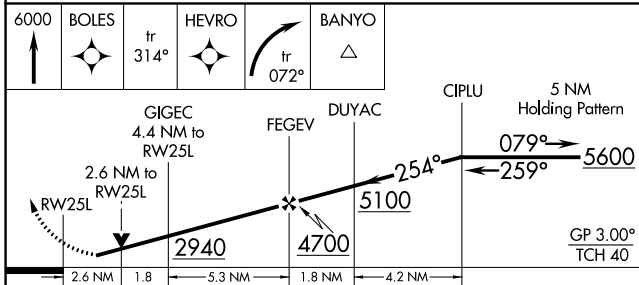
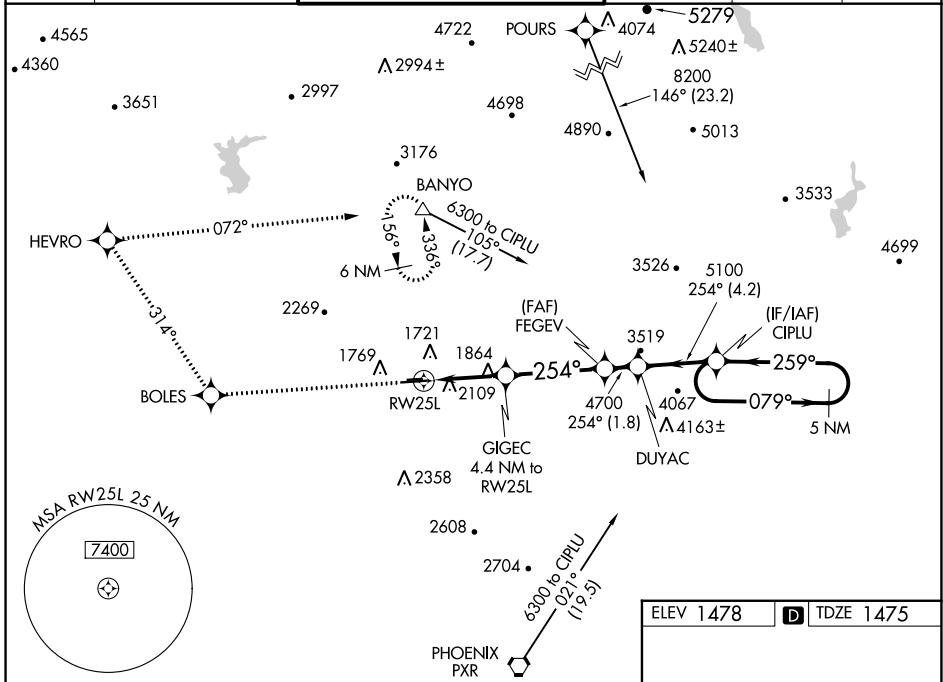
PHOENIX DEER VALLEY (DVT)

RNP APCH - GPS.

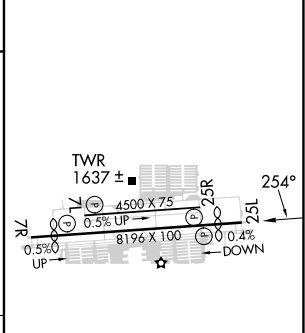
⚠ When VGSI inop, Circling to Rwy 25R NA at night. Circling NA north of Rwy 7R-25L at night. When local altimeter setting not received, use Scottsdale altimeter setting; increase LPV all Cats DA to 1877 feet and LPV all Cats visibility 1/8 SM. Increase all MDA 40 feet and Circling Cats B visibility 1/4 SM. Rwy 25L helicopter visibility reduction below 3/4 SM NA. VDP NA when using Scottsdale altimeter setting.

MISSED APPROACH: Climb to 6000 direct BOLES and on track 314° to HEVRO and right turn on track 072° to BANYO and hold.

ATIS <b>126.5</b>	PHOENIX APP CON <b>120.7 239.0</b>	DEER VALLEY TOWER * <b>118.4</b> (070°-250°) (CTAF) <b>120.2</b> (251°-069°)	GND CON <b>121.8</b>	CLNC DEL <b>123.9</b>	UNICOM <b>122.95</b>
----------------------	---------------------------------------	--	-------------------------	--------------------------	-------------------------



ELEV 1478	TDZE 1475
-----------	-----------



CATEGORY	A	B	C	D
LPV DA	1850-1 1/4 375 (400-1 1/4)			
LNAV MDA	2360-1 1/4 885 (900-1 1/4)	2360-2 3/4 885 (900-2 3/4)	2360-3 885 (900-3)	
CIRCLING	2400-1 1/4 922 (1000-1 1/4)	2420-1 1/4 942 (1000-1 1/4)	2580-3 1102 (1200-3)	2700-3 1222 (1300-3)

MIRL Rwy 7L-25R and 7R-25L  
REIL Rwy 7L, 7R, 25L, and 25R

SW-4, 30 NOV 2023 to 28 DEC 2023

SW-4, 30 NOV 2023 to 28 DEC 2023