

APP CRS	Rwy Idg	N/A
254°	TDZE	N/A
	Apt Elev	1478

RNAV (GPS)-B

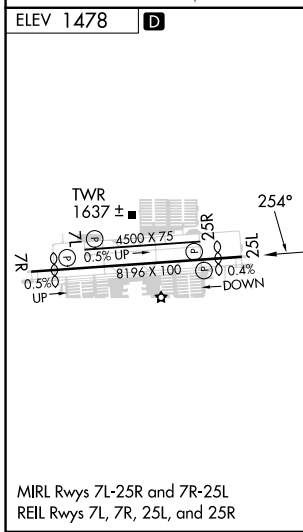
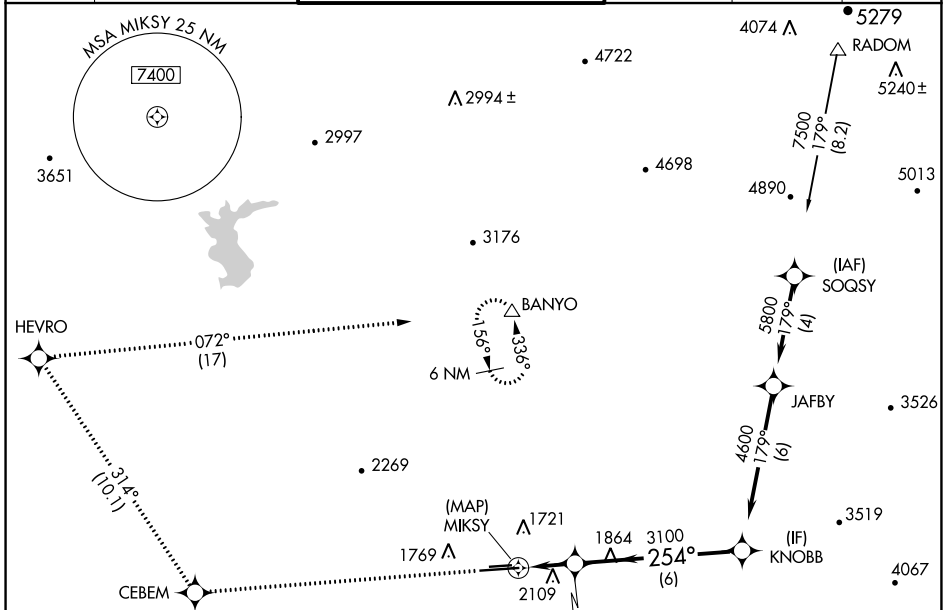
PHOENIX DEER VALLEY (DVT)

RNP APCH - GPS.

⚠ When VGSI inop, Circling to Rwy 25R NA at night. Circling not authorized at night north of Rwy 7R-25L. When local altimeter setting not received, use Scottsdale altimeter setting and increase all MDAs 40 feet and Circling Cat B visibility ¼ SM.

MISSED APPROACH: Climb to 6000 direct CEBEM and on track 314° to HEVRO and right turn on track 072° to BANYO and hold.

ATIS	PHOENIX APP CON	DEER VALLEY TOWER ★	GND CON	CLNC DEL	UNICOM
126.5	120.7 239.0	118.4 (070°-250°) (CTAF) 120.2 (251°-069°)	121.8	123.9	122.95



ELEV 1478	D	6000	CEBEM	tr 314°	HEVRO	tr 072°	BANYO	KNOBB
		JERGI			MIKSY		4600	
		TCH 40		254°		3100		Procedure Turn NA
		2 NM		6 NM				
CATEGORY	A	B	C	D				
CIRCLING	2400-1¼ 922 (1000-1¼)	2420-1¼ 942 (1000-1¼)	2580-3 1102 (1200-3)	NA				

SW-4, 30 NOV 2023 to 28 DEC 2023

SW-4, 30 NOV 2023 to 28 DEC 2023