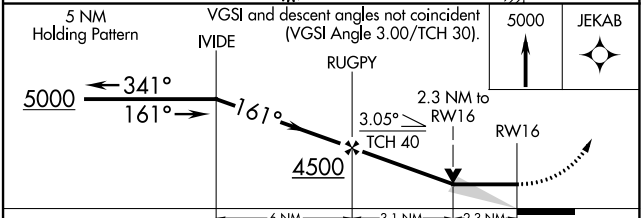
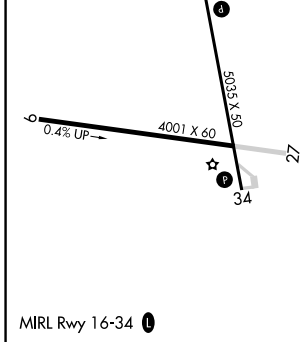
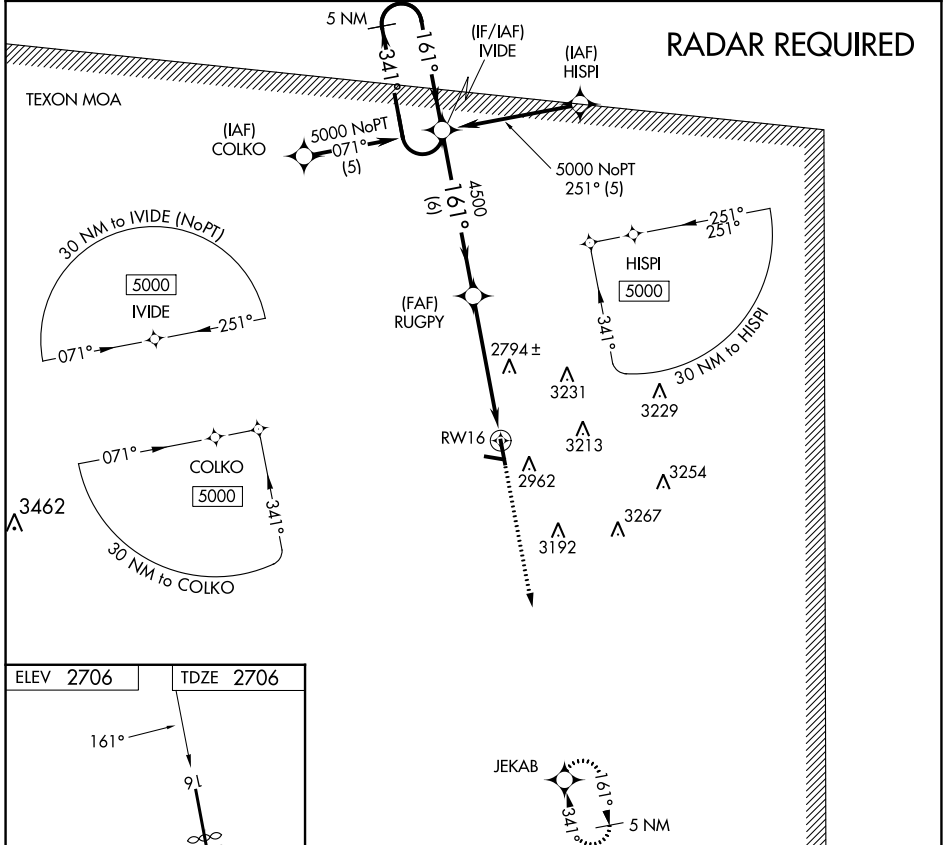


APP CRS	Rwy Idg	<b>4030</b>
<b>161°</b>	TDZE	<b>2706</b>
	Apt Elev	<b>2706</b>

# RNAV (GPS) RWY 16

REAGAN COUNTY (E41)

RNP APCH		MISSED APPROACH: Climb to 5000 direct JEKAB and hold.	
<p>▼ When local altimeter not received, use San Angelo altimeter setting. Circling NA east of Rwy 16-34.</p>			
AWOS-3PT	FORT WORTH CENTER	CTAF	
<b>118.4</b>	<b>126.15 322.55</b>	<b>122.9</b>	



CATEGORY	A	B	C	D
LNAV MDA	3460-1 754 (800-1)	3460-1¼ 754 (800-1¼)	3460-2¼ 754 (800-2¼)	NA
CIRCLING	3460-1 754 (800-1)	3460-1¼ 754 (800-1¼)	3460-2¼ 754 (800-2¼)	NA

SC-3, 30 NOV 2023 to 28 DEC 2023

SC-3, 30 NOV 2023 to 28 DEC 2023