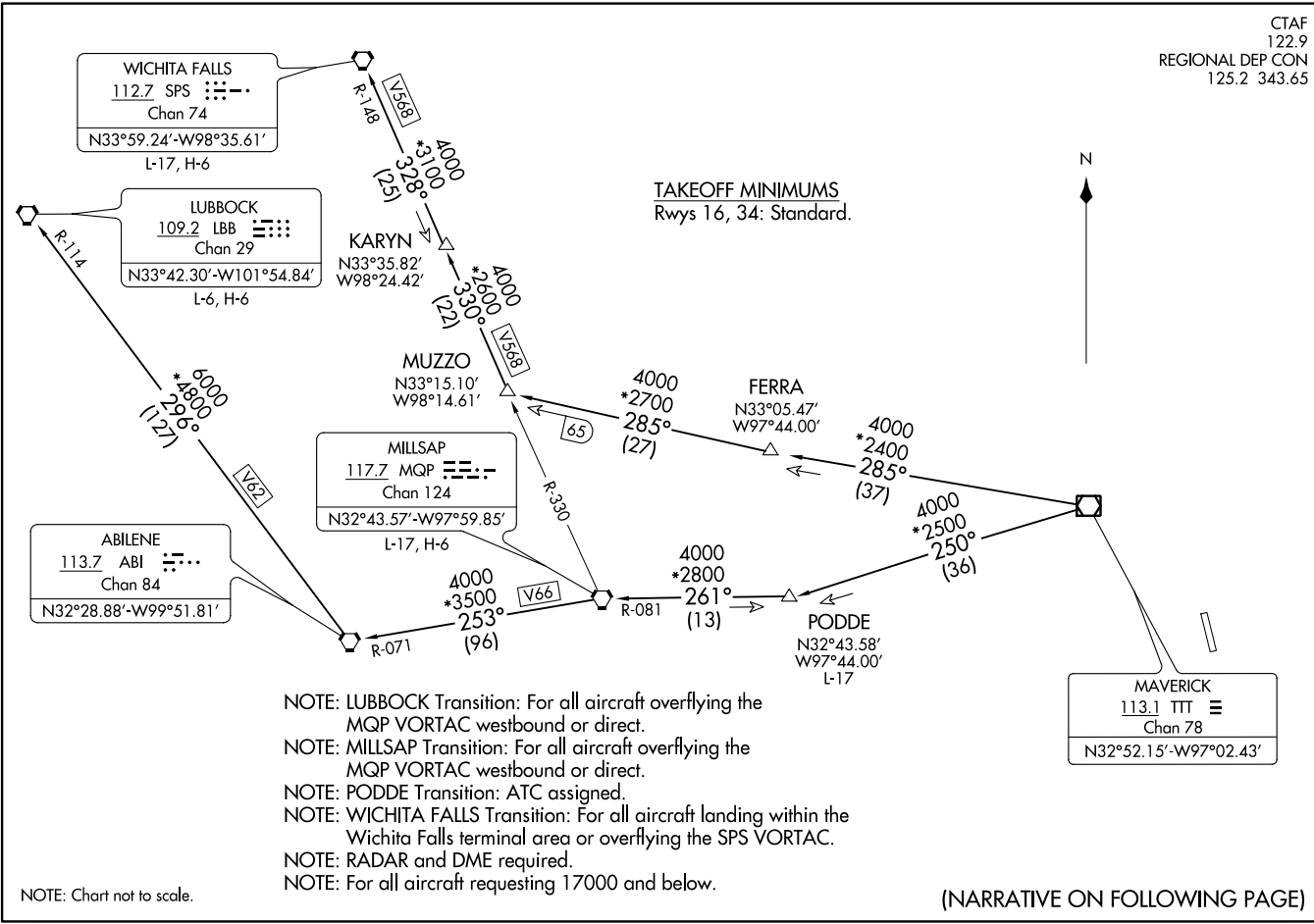


CTAF  
122.9  
REGIONAL DEP CON  
125.2 343.65

KINGDOM THREE DEPARTURE



TAKEOFF MINIMUMS  
Rwys 16, 34: Standard.

- NOTE: LUBBOCK Transition: For all aircraft overflying the MQP VORTAC westbound or direct.
- NOTE: MILLSAP Transition: For all aircraft overflying the MQP VORTAC westbound or direct.
- NOTE: PODDE Transition: ATC assigned.
- NOTE: WICHITA FALLS Transition: For all aircraft landing within the Wichita Falls terminal area or overflying the SPS VORTAC.
- NOTE: RADAR and DME required.
- NOTE: For all aircraft requesting 17000 and below.

NOTE: Chart not to scale.

(NARRATIVE ON FOLLOWING PAGE)

KINGDOM THREE DEPARTURE  
(KING3.TTT) 24MAR22

# KINGDOM THREE DEPARTURE



## DEPARTURE ROUTE DESCRIPTION

Fly assigned heading and altitude, expect vector to appropriate route.

LUBBOCK TRANSITION (KING3.LBB): From over TTT VOR/DME on TTT R-250 to PODDE, then on MQP R-081 to MQP VORTAC, then on MQP R-253 and ABI R-071 to ABI VORTAC, then on ABI R-296 and LBB R-114 to LBB VORTAC.

MILLSAP TRANSITION (KING3.MQP): From over TTT VOR/DME on TTT R-250 to PODDE, then on MQP R-081 to MQP VORTAC.

PODDE TRANSITION (KING3.PODDE): From over TTT VOR/DME on TTT R-250 to PODDE.

WICHITA FALLS TRANSITION (KING3.SPS): From over TTT VOR/DME on TTT R-285 to MUZZO, then on MQP R-330 and SPS R-148 to KARYN, then on SPS R-148 to SPS VORTAC.

SC-2, 30 NOV 2023 to 28 DEC 2023

SC-2, 30 NOV 2023 to 28 DEC 2023