

GARLAND FOUR DEPARTURE
(GARL4.TT) 29DEC22

FORT WORTH, TEXAS
FORT WORTH SPINKS (FWS)

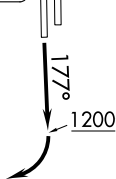
ATIS
120.025
GND CON
119.475
SPINKS TOWER *
124.625 (CTAF)
REGIONAL DEP CON
135.975 379.9

RADAR and DME required.

TAKEOFF MINIMUMS
Rwys 18L, 36R: NA-Environmental.
Rwys 18R, 36L: Standard.

NOTE: SOLDO Transition: ATC assigned.

MAVERICK
113.1 TTT
Chan 78
N32°52.15'-W97°02.43'



BONHAM
114.6 BYP
Chan 93

PARIS
113.6 PRX
Chan 83
N33°32.54'-W95°26.90'

TEXARKANA
116.3 TXK
Chan 110
N33°30.83'-W94°04.39'

NOBLY
N33°04.94'
W96°19.96'

TRISS
N32°58.20'
W96°19.94'

5000 *2100
064°
5000 *2300
074° (38)

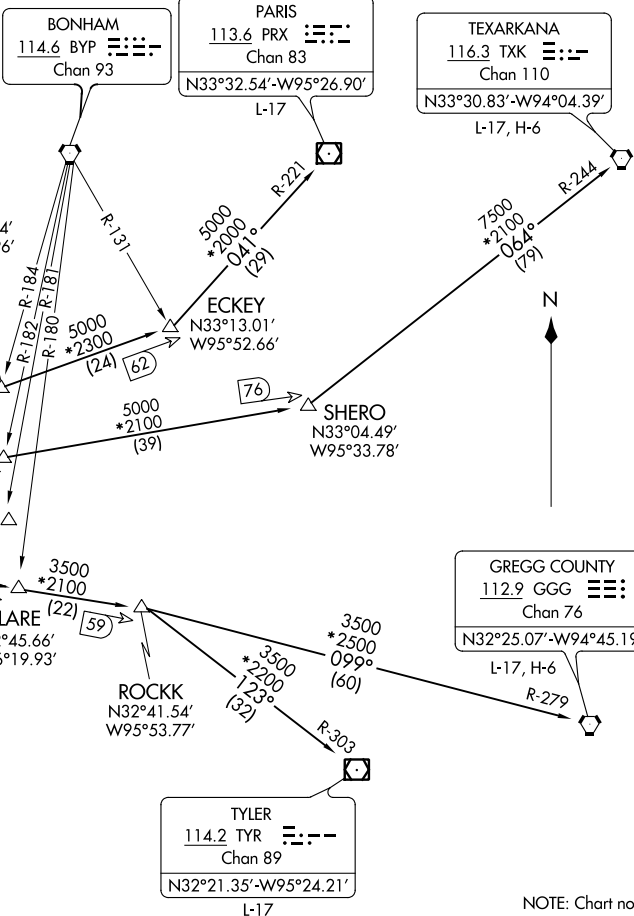
5000 *2300
084° (36)

SOLDO
N32°51.92'
W96°19.94'

CLARE
N32°45.66'
W96°19.93'

ROCK
N32°41.54'
W95°53.77'

TYLER
114.2 TYR
Chan 89
N32°21.35'-W95°24.21'



(NARRATIVE ON FOLLOWING PAGE)

NOTE: Chart not to scale.

(GARL4.TT) 22363
GARLAND FOUR DEPARTURE

FORT WORTH SPINKS (FWS)
FORT WORTH, TEXAS

AL-6917 (FAA)

GARLAND FOUR DEPARTURE



DEPARTURE ROUTE DESCRIPTION

TAKEOFF RUNWAY 18R: Climb on heading 177° to 1200 before turning right.

When entering controlled airspace, fly assigned heading and altitude, for vector to appropriate route.

GREGG COUNTY TRANSITION (GARL4.GGG): From over TTT VOR/DME on TTT R-094 to ROCKK, then on GGG R-279 to GGG VORTAC.

PARIS TRANSITION (GARL4.PRX): From over TTT VOR/DME on TTT R-064 to ECKEY, then on PRX R-221 to PRX VOR/DME.

SOLDO TRANSITION (GARL4.SOLDO): From over TTT VOR/DME on TTT R-084 to SOLDO.

TEXARKANA TRANSITION (GARL4.TXK): From over TTT VOR/DME on TTT R-074 to SHERO, then on TXK R-244 to TXK VORTAC.

TYLER TRANSITION (GARL4.TYR): From over TTT VOR/DME on TTT R-094 to ROCKK, then on TYR R-303 to TYR VOR/DME.

SC-2, 30 NOV 2023 to 28 DEC 2023

SC-2, 30 NOV 2023 to 28 DEC 2023