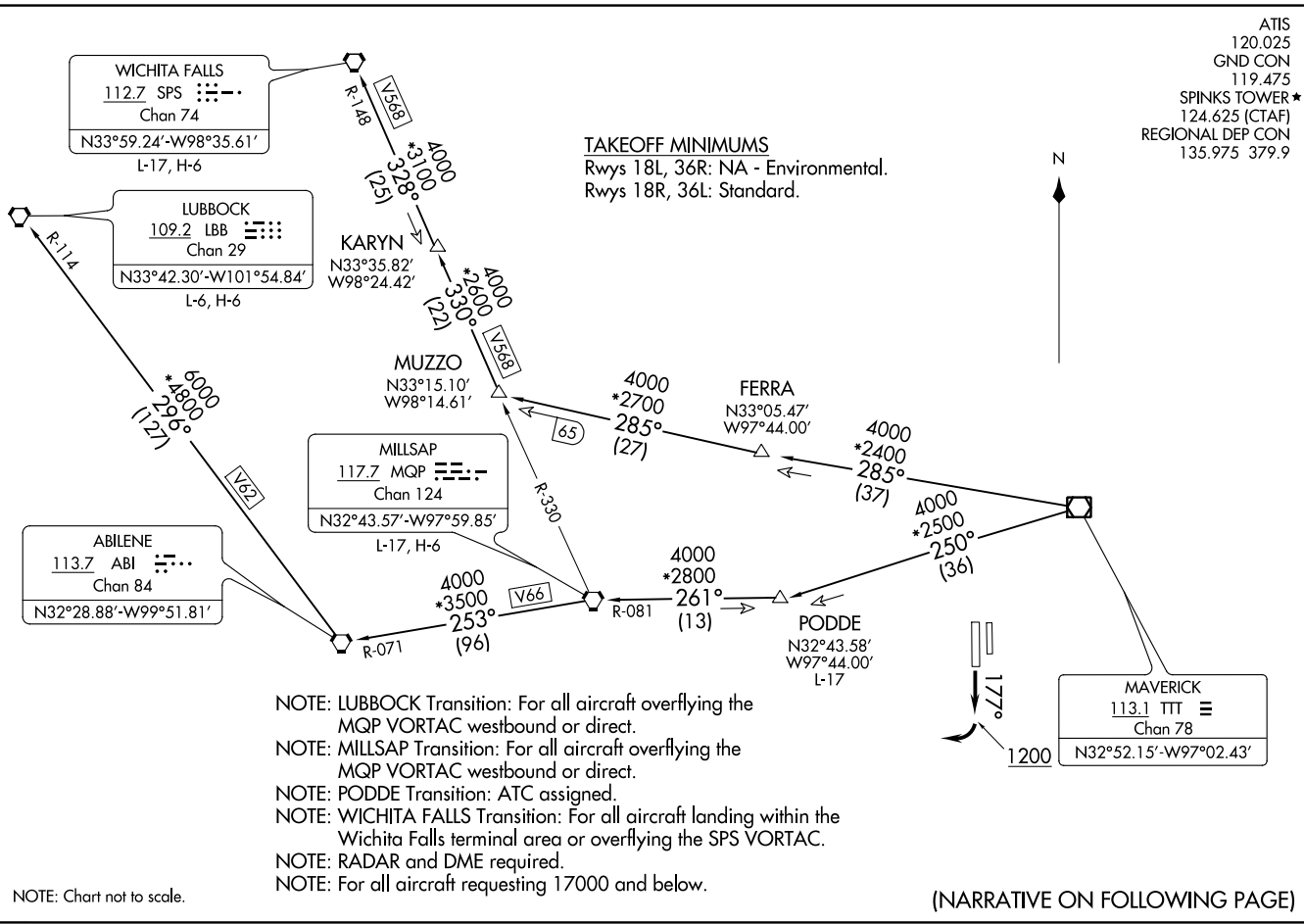


KINGDOM THREE DEPARTURE  
(KING3.TTT) 24MAR22

FORT WORTH, TEXAS  
FORT WORTH SPINKS (F'W'S)



ATIS  
120.025  
GND CON  
119.475  
SPINKS TOWER\*  
124.625 (CTAF)  
REGIONAL DEP CON  
135.975 379.9

(KING3.TTT) 22083  
KINGDOM THREE DEPARTURE

FORT WORTH SPINKS (F'W'S)  
FORT WORTH, TEXAS

AL-6917 (FAA)

(NARRATIVE ON FOLLOWING PAGE)

# KINGDOM THREE DEPARTURE



## DEPARTURE ROUTE DESCRIPTION

TAKEOFF RUNWAY 18R: Climb on heading 177° to 1 200 before turning right, thence. . . .

. . . . fly assigned heading and altitude, for vector to appropriate route.

LUBBOCK TRANSITION (KING3.LBB): From over TTT VOR/DME on TTT R-250 to PODDE, then on MQP R-081 to MQP VORTAC, then on MQP R-253 and ABI R-071 to ABI VORTAC, then on ABI R-296 and LBB R-114 to LBB VORTAC.

MILLSAP TRANSITION (KING3.MQP): From over TTT VOR/DME on TTT R-250 to PODDE, then on MQP R-081 to MQP VORTAC.

PODDE TRANSITION (KING3.PODDE): From over TTT VOR/DME on TTT R-250 to PODDE.

WICHITA FALLS TRANSITION (KING3.SPS): From over TTT VOR/DME on TTT R-285 to MUZZO, then on MQP R-330 and SPS R-148 to KARYN, then on SPS R-148 to SPS VORTAC.

SC-2, 30 NOV 2023 to 28 DEC 2023

SC-2, 30 NOV 2023 to 28 DEC 2023