

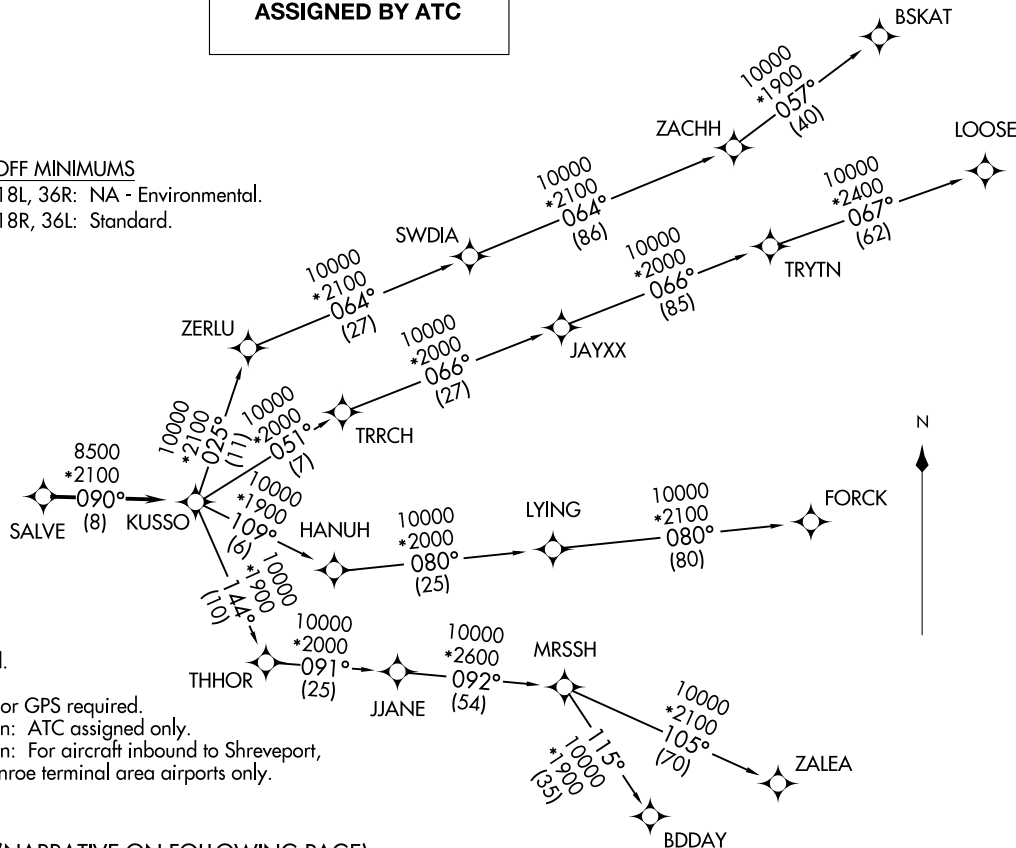
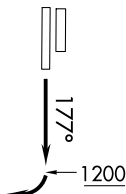
**TOP ALTITUDE:  
ASSIGNED BY ATC**

ATIS  
120.025  
GND CON  
119.475  
SPINKS TOWER \*  
124.625 (CTAF)  
REGIONAL DEP CON  
135.975 379.9

TAKEOFF MINIMUMS  
Rwys 18L, 36R: NA - Environmental.  
Rwys 18R, 36L: Standard.

KUSSO ONE DEPARTURE (RNAV)  
(KUSSO1 .KUSSO) 24MAR22

(KUSSO1 .KUSSO) 22083  
KUSSO ONE DEPARTURE (RNAV)



- NOTE: RADAR required.
- NOTE: RNAV 1.
- NOTE: DME/DME/IRU or GPS required.
- NOTE: BDDAY Transition: ATC assigned only.
- NOTE: MRSSH Transition: For aircraft inbound to Shreveport, Jackson and Monroe terminal area airports only.

(NARRATIVE ON FOLLOWING PAGE)

NOTE: Chart not to scale.

AL-6917 (FAA)

FORT WORTH SPINKS (FWS)  
FORT WORTH, TEXAS

FORT WORTH, TEXAS  
FORT WORTH SPINKS (FWS)

# KUSSO ONE DEPARTURE (RNAV)



## DEPARTURE ROUTE DESCRIPTION

TAKEOFF RUNWAY 18R: Climb on heading 177° to 1200 before turning right.

When entering controlled airspace, fly heading assigned by ATC, expect vector to SALVE, then on track 090° to KUSSO, then on assigned transition. Maintain ATC assigned altitude, expect filed altitude 10 minutes after departure.

BDDAY TRANSITION (KUSSO1.BDDAY)

BSKAT TRANSITION (KUSSO1.BSKAT)

FORCK TRANSITION (KUSSO1.FORCK)

LOOSE TRANSITION (KUSSO1.LOOSE)

MRSSH TRANSITION (KUSSO1.MRSSH)

ZALEA TRANSITION (KUSSO1.ZALEA)

SC-2, 30 NOV 2023 to 28 DEC 2023

SC-2, 30 NOV 2023 to 28 DEC 2023