

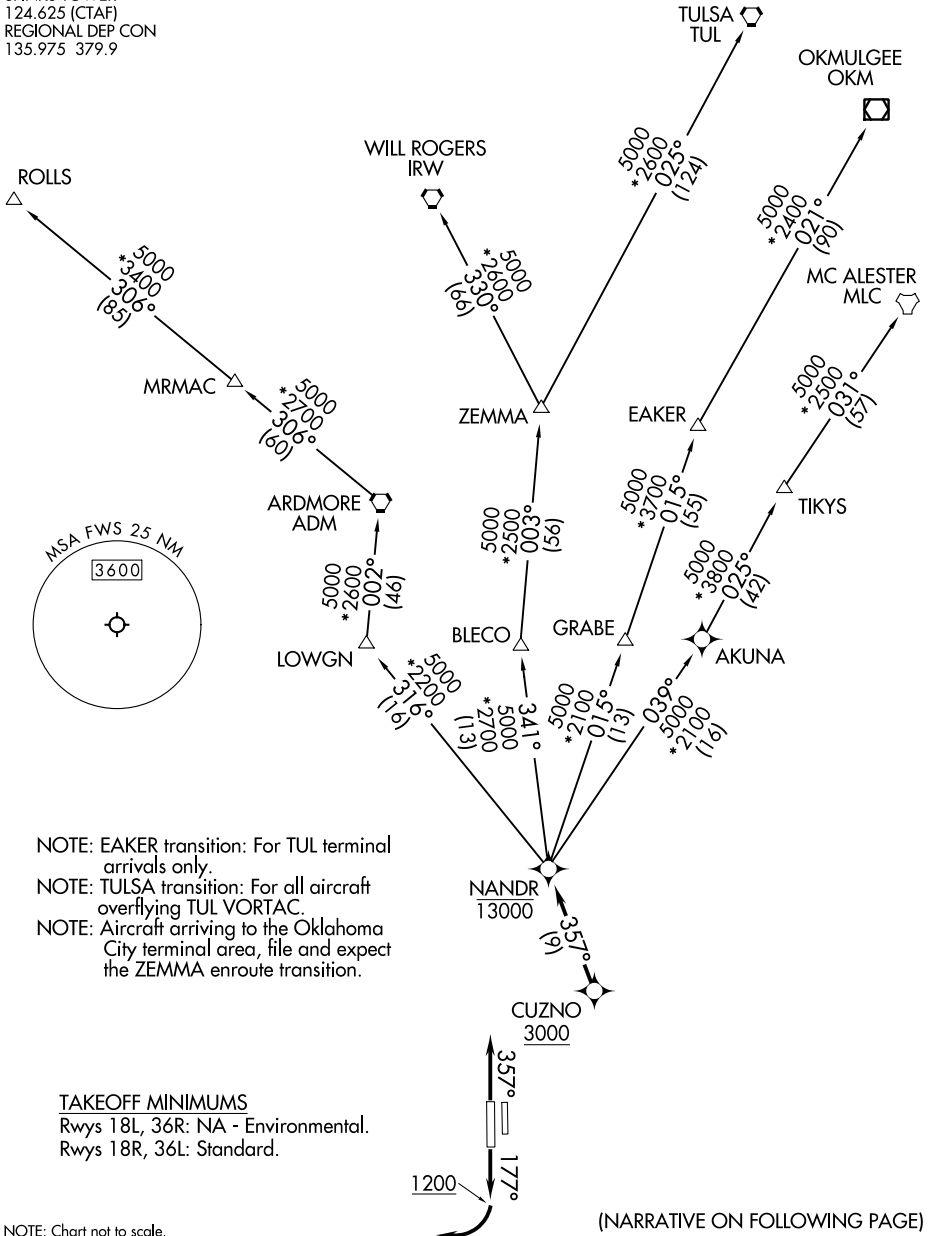
# NANDR TWO DEPARTURE (RNAV)

ATIS  
120.025  
GND CON  
119.475  
SPINKS TOWER ★  
124.625 (CTAF)  
REGIONAL DEP CON  
135.975 379.9

RNAV 1 - DME/DME/IRU or GPS.

RADAR required.

**TOP ALTITUDE:  
ASSIGNED BY ATC**



SC-2, 30 NOV 2023 to 28 DEC 2023

SC-2, 30 NOV 2023 to 28 DEC 2023

# NANDR TWO DEPARTURE (RNAV)



DEPARTURE ROUTE DESCRIPTION

TAKEOFF RUNWAY 18R: Climb on heading 177° to 1200 before turning right or as assigned by ATC, thence...

TAKEOFF RUNWAY 36L: Climb on heading 357° or as assigned by ATC, thence...

. . . . expect RADAR vectors to cross CUZNO at or above 3000, then on track 357° to cross NANDR at or below 13000, then on assigned transition.

EAKER TRANSITION (NANDR2.EAKER)

MC ALESTER TRANSITION (NANDR2.MLC)

OKMULGEE TRANSITION (NANDR2.OKM)

ROLLS TRANSITION (NANDR2.ROLLS)

TULSA TRANSITION (NANDR2.TUL)

WILL ROGERS TRANSITION (NANDR2.IRW)

ZEMMA TRANSITION (NANDR2.ZEMMA)

SC-2, 30 NOV 2023 to 28 DEC 2023

SC-2, 30 NOV 2023 to 28 DEC 2023