

WAAS CH 62899 W18A	APP CRS 177°	Rwy Idg TDZE 700 Apt Elev 700
--	------------------------	---

RNAV (GPS) RWY 18R

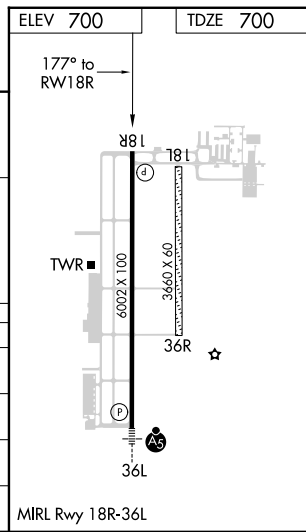
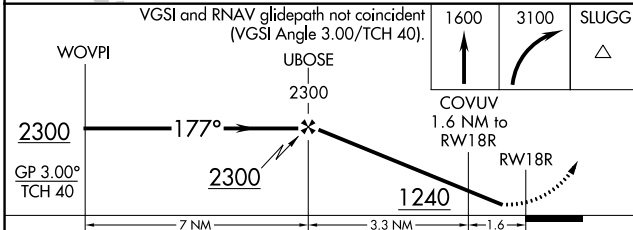
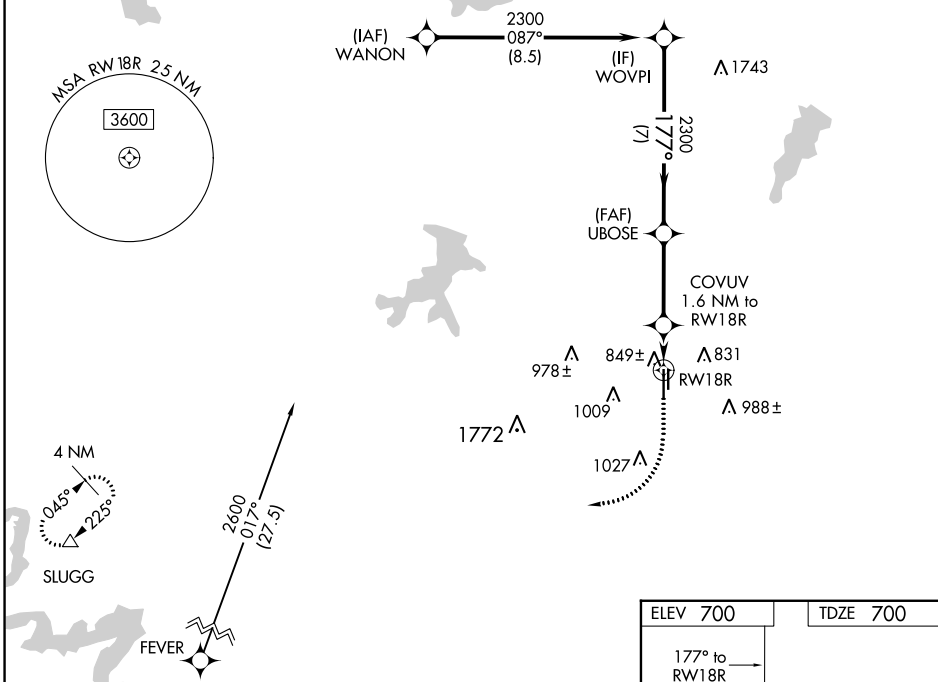
FORT WORTH SPINKS (FWS)

RNP APCH-GPS.

⚠ Circling NA west of Rwy 18R-36L. Rwy 18R helicopter visibility reduction below $\frac{3}{4}$ NA. For uncompensated Baro-VNAV systems, LNAV/VNAV NA below -16°C or above 54°C.

MISSED APPROACH: Climb to 1600 then climbing right turn to 3100 direct SLUGG and hold.

ATIS 120.025	REGIONAL APP CON 135.975 379.9	SPINKS TOWER ★ 124.625 (CTAF) 0	GND CON 119.475	UNICOM 122.7
------------------------	--	--	---------------------------	------------------------



CATEGORY	A	B	C	D
LPV DA	950- $\frac{3}{4}$		250 (300- $\frac{3}{4}$)	
LNAV/VNAV DA	1030-1		330 (400-1)	
LNAV MDA	1100-1 400 (400-1)		1100-1 $\frac{1}{8}$ 400 (400-1 $\frac{1}{8}$)	
CIRCLING	1200-1 500 (500-1)		1340-1 $\frac{3}{4}$ 640 (700-1 $\frac{3}{4}$) 1340-2 640 (700-2)	

SC-2, 30 NOV 2023 to 28 DEC 2023

SC-2, 30 NOV 2023 to 28 DEC 2023