

SASIE SEVEN ARRIVAL  
(SASIE: SASIE7) 29DEC22

(SASIE: SASIE7) 22363  
SASIE SEVEN ARRIVAL

AL-6918 (FAA)

DALLAS-FORT WORTH, TEXAS

REGIONAL APP CON  
124.3 282.275  
ADS ATIS  
133.4  
AFW ATIS  
126.925  
FTW ATIS  
120.7  
FWS ATIS  
120.025  
KNFW ATIS\*  
351.675

ARDMORE  
116.7 ADM  
Chan 114  
N34°12.70'  
W97°10.09'  
L-17, H-6

TULSA  
114.4 TUL  
Chan 91  
N36°11.78'  
W95°47.29'  
L-15, H-6

FORT SMITH  
110.4 FSM  
Chan 41  
N35°23.30'-W94°16.29'  
L-16, H-6

LITTLE ROCK  
113.9 LIT  
Chan 86  
N34°40.66'-W92°10.83'  
L-18, H-6

RICH MOUNTAIN  
113.5 PGO  
Chan 82

MEEOW  
N34°19.09'  
W93°31.42'

GREGG COUNTY  
112.9 GGG  
Chan 76

TEXARKANA  
116.3 TXK  
Chan 110  
N33°30.83'  
W94°04.39'  
L-17, H-6

EL DORADO  
115.5 ELD  
Chan 102

PARIS  
113.6 PRX  
Chan 83  
N33°32.54'  
W95°26.90'  
L-17

MONTE  
N33°32.41'  
W95°53.71'

BONHAM  
114.6 BYP  
Chan 93  
N33°32.25'  
W96°14.05'  
L-17, H-6

RANGER  
115.7 FUZ  
Chan 104

DENTON  
ENTERPRISE

DECATUR  
MUNI

PEROT FLD/FORT  
WORTH ALLIANCE

FORT WORTH MEACHAM INTL

FORT WORTH NAS JBR (CARSWELL FLD)

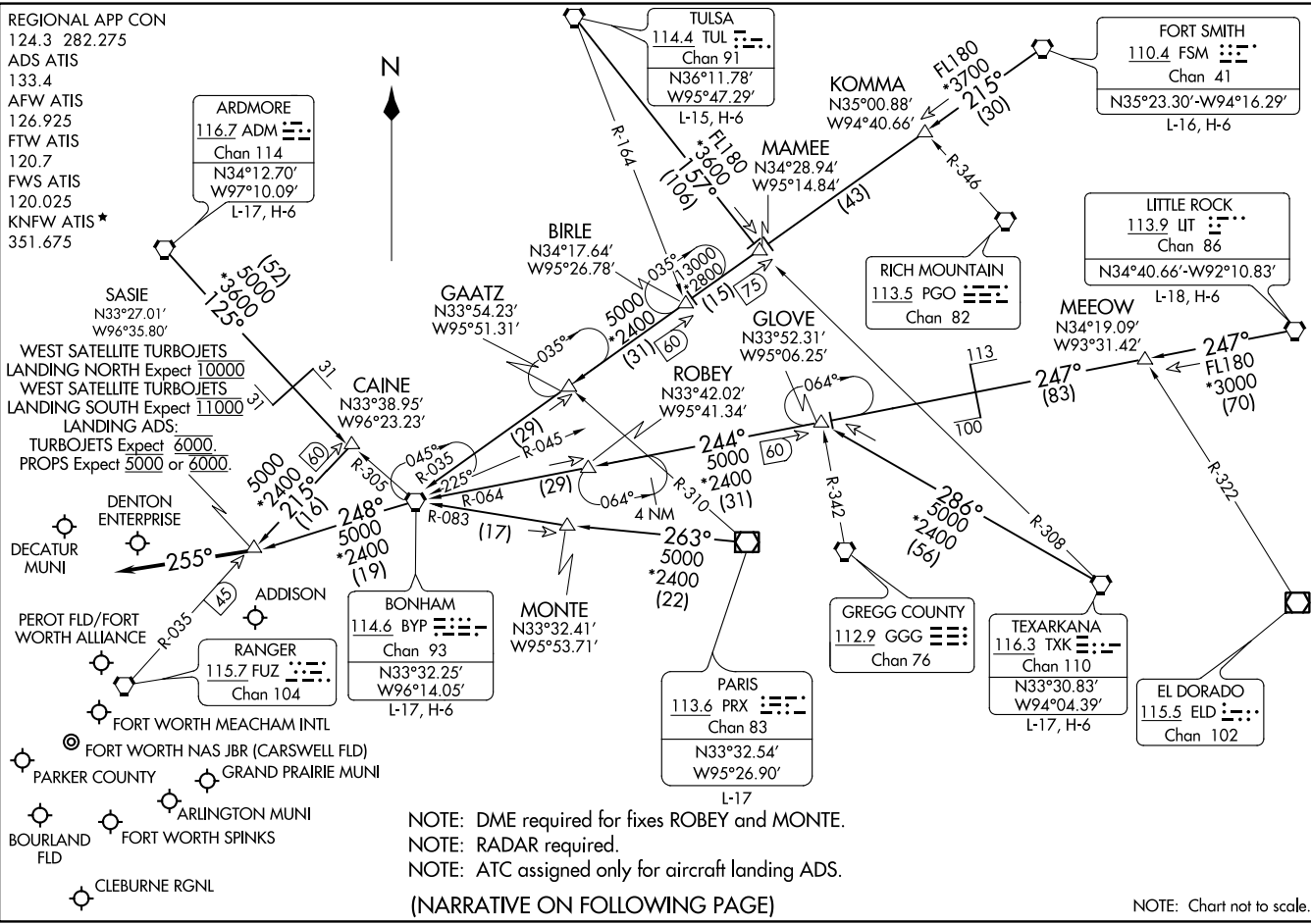
PARKER COUNTY

ARLINGTON MUNI

BOURLAND  
FLD

FORT WORTH SPINKS

CLEBURNE RGNL



NOTE: DME required for fixes ROBEY and MONTE.  
NOTE: RADAR required.  
NOTE: ATC assigned only for aircraft landing ADS.

(NARRATIVE ON FOLLOWING PAGE)

NOTE: Chart not to scale.

DALLAS-FORT WORTH, TEXAS

ARRIVAL ROUTE DESCRIPTION

ARDMORE TRANSITION (ADM.SASIE7): From over ADM VORTAC on ADM R-125 and BYP R-305 to CAINE, then on FUZ R-035 to SASIE. Thence . . . .

BONHAM TRANSITION (BYP.SASIE7): From over BYP VORTAC on BYP R-248 to SASIE. Thence . . . .

CAINE TRANSITION (CAINE.SASIE7): From over CAINE on FUZ VORTAC R-035 to SASIE. Thence . . . .

FORT SMITH TRANSITION (FSM.SASIE7): From over FSM VORTAC on FSM R-215 to MAMEE, then on BYP R-035 to BYP VORTAC, then on BYP R-248 to SASIE. Thence . . . .

LITTLE ROCK TRANSITION (LIT.SASIE7): From over LIT VORTAC on LIT R-247 to MEEOW, then on LIT R-247 and BYP R-064 to GLOVE, then on BYP R-064 to BYP VORTAC, then on BYP R-248 to SASIE. Thence . . . .

PARIS TRANSITION (PRX.SASIE7): From over PRX VOR/DME on PRX R-263 and BYP R-083 to MONTE, then on BYP R-083 to BYP VORTAC, then on BYP R-248 to SASIE. Thence . . . .

TEXARKANA TRANSITION (TXK.SASIE7): From over TXK VORTAC on TXK R-286 to GLOVE, then on BYP R-064 to BYP VORTAC, then on BYP R-248 to SASIE. Thence . . . .

TULSA TRANSITION (TUL.SASIE7): From over TUL VORTAC on TUL R-157 to MAMEE, then on BYP R-035 to BYP VORTAC, then on BYP R-248 to SASIE. Thence . . . .

. . . . from SASIE, then on heading 255° or as assigned by ATC. Expect RADAR vectors to final approach course.

SC-2, 30 NOV 2023 to 28 DEC 2023

SC-2, 30 NOV 2023 to 28 DEC 2023