

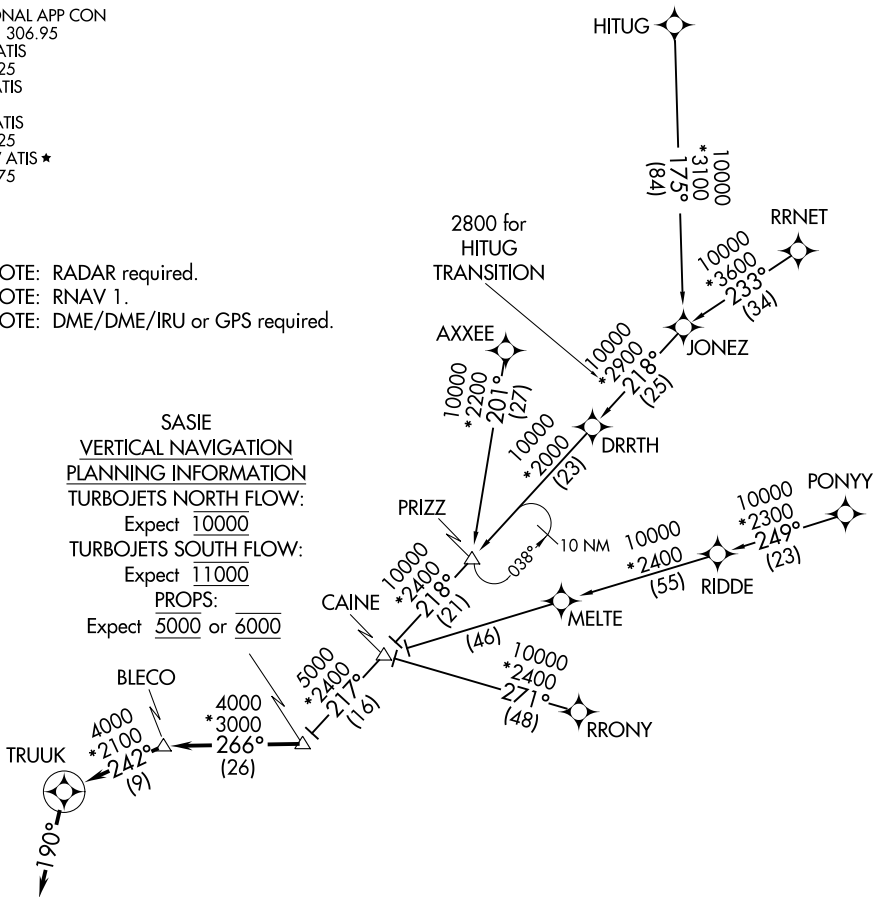
TRUUK TWO ARRIVAL (RNAV)

DALLAS-FORT WORTH, TEXAS

REGIONAL APP CON
 118.1 306.95
 AFW ATIS
 126.925
 FTW ATIS
 120.7
 FWS ATIS
 120.025
 KNFW ATIS ★
 351.675

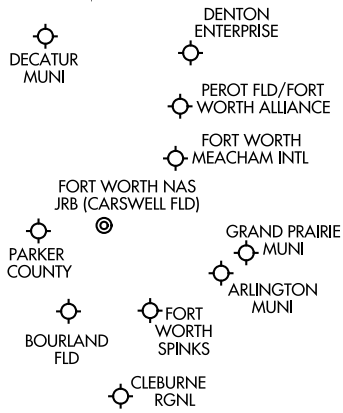
NOTE: RADAR required.
 NOTE: RNAV 1.
 NOTE: DME/DME/IRU or GPS required.

SASIE
VERTICAL NAVIGATION
PLANNING INFORMATION
 TURBOJETS NORTH FLOW:
 Expect 10000
 TURBOJETS SOUTH FLOW:
 Expect 11000
 PROPS:
 Expect 5000 or 6000



SC-2, 30 NOV 2023 to 28 DEC 2023

SC-2, 30 NOV 2023 to 28 DEC 2023



NOTE: Chart not to scale.

ARRIVAL ROUTE DESCRIPTION

AXXEE TRANSITION (AXXEE.TRUUK2): (For aircraft filing FL230 and below).

HITUG TRANSITION (HITUG.TRUUK2)

PONYNY TRANSITION (PONYNY.TRUUK2)

RRNET TRANSITION (RRNET.TRUUK2)

RRONY TRANSITION (RRONY.TRUUK2): (For aircraft filing FL230 and below).

From SASIE on track 266° to BLECO, then on track 242° to TRUUK, then on track 190°. Expect RADAR vectors to final approach course.

TRUUK TWO ARRIVAL (RNAV)

DALLAS-FORT WORTH, TEXAS