

VOR/DME FAY	APP CRS	Rwy Idg	5006
114.85	152°	TDZE	132
Chan 95(Y)		Apt Elev	132

VOR/DME RWY 15

CURTIS L BROWN JR FLD (EYF)

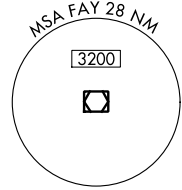
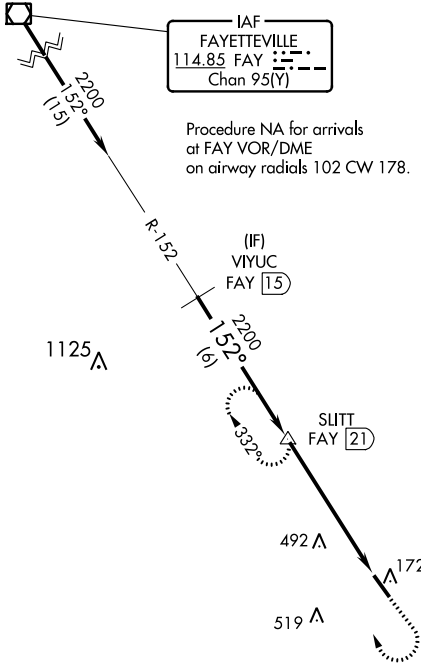
▼ Visibility reduction by helicopters NA. When local altimeter setting not received, use Fayetteville altimeter setting; increase all MDA 80 feet and increase S-15 Cats C and D and Circling Cat C and D visibility ¼ SM.

MISSED APPROACH: Climb to 1000 then climbing right turn to 2200 on FAY R-152 to SLITT/21 DME and hold.

AWOS-3P
119.475

FAYETTEVILLE APP CON
133.0 290.25

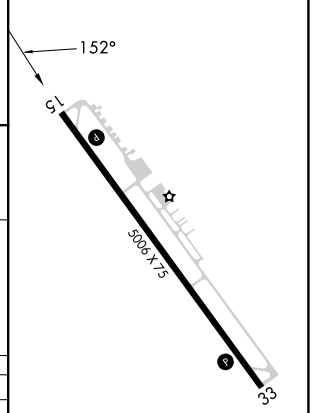
UNICOM
122.8 (CTAF) ①



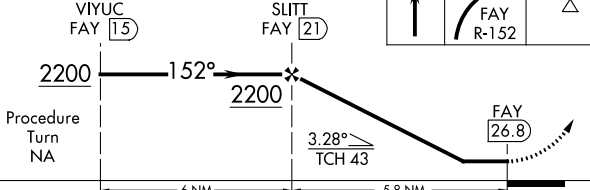
SE-2, 30 NOV 2023 to 28 DEC 2023

SE-2, 30 NOV 2023 to 28 DEC 2023

ELEV 132	TDZE 132
----------	----------



VGSI and RNAV glidepath not coincident (VGSI Angle 3.00/TCH 32).



CATEGORY	A	B	C	D
S-15	760-1 628 (700-1)	760-1¼ 628 (700-1¼)	760-1¾ 628 (700-1¾)	760-2 628 (700-2)
CIRCLING	760-1 628 (700-1)	760-1¼ 628 (700-1¼)	880-2¼ 748 (800-2¼)	880-2½ 748 (800-2½)

REIL Rwy 15 and 33 ①
MIRL Rwy 15-33 ①