

WAAS CH 52102 W17A	APP CRS 172°	Rwy Idg 3532 TDZE 861 Apt Elev 861
--	------------------------	---

RNAV (GPS) RWY 17

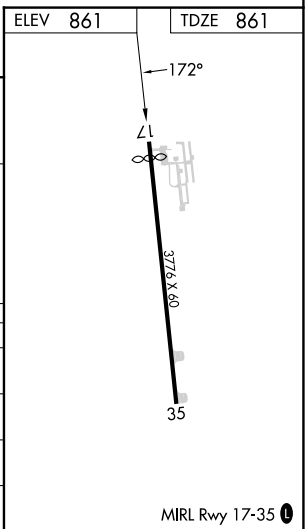
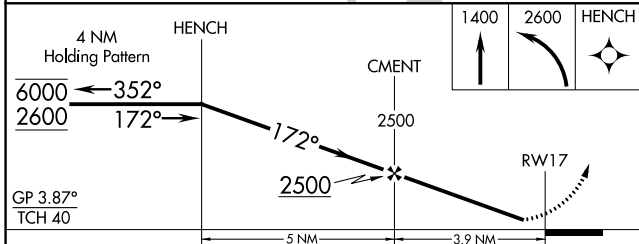
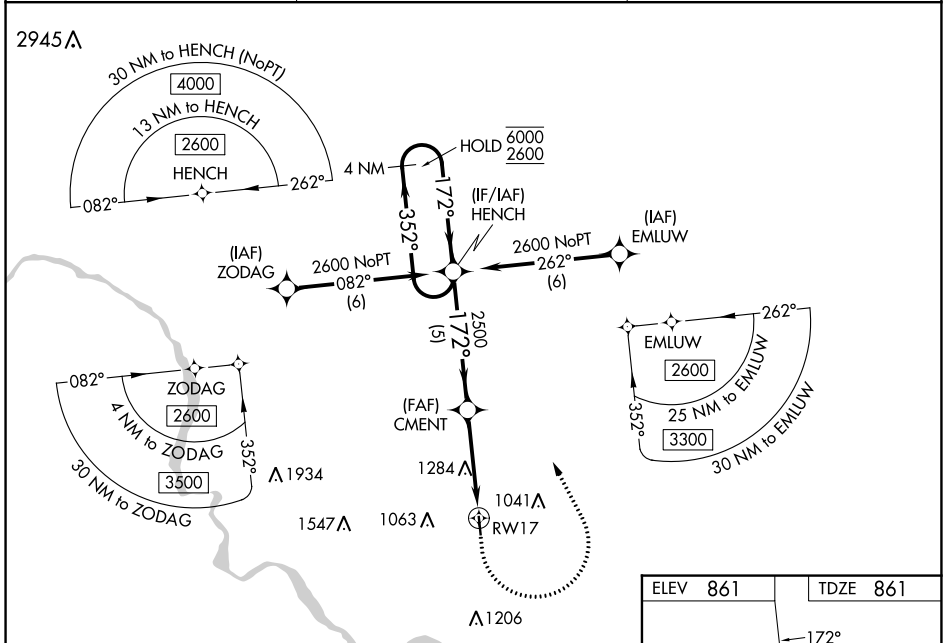
MARION (C17)

RNP APCH - GPS.

NA Baro-VNAV NA. Straight-in Rwy 17, NA at night. Circling NA for Cat B west of Rwy 17/35. Use The Eastern Iowa altimeter setting; when not received, use Monticello Rgnl altimeter setting; increase LPV DA to 1162; increase LNAV/VNAV DA to 1670; increase all MDAs 40 feet. For uncompensated Baro-VNAV system, LNAV/VNAV NA below -6°C or above 54°C. Rwy 17, helicopter visibility reduction below 1 SM NA.

MISSED APPROACH: Climb to 1400 then climbing left turn to 2600 direct HENCH and hold.

CID ASOS 124.15	CEDAR RAPIDS APP CON * 134.05 266.8	UNICOM 122.7 (CTAF) 0
---------------------------	---	---------------------------------



CATEGORY	A	B	C	D
LPV DA	1140-1	279 (300-1)		NA
LNAV/VNAV DA	1648-2½	787 (800-2½)		NA
LNAV MDA	1560-1	699 (700-1)		NA
CIRCLING	1560-1 699 (700-1)	1620-1 759 (800-1)		NA

NC-3, 30 NOV 2023 to 28 DEC 2023

NC-3, 30 NOV 2023 to 28 DEC 2023