

| | | |
|--|------------------------|---|
| WAAS CH 98719 W35A | APP CRS 352° | Rwy Idg TDZE 861 Apt Elev 861 |
|--|------------------------|---|

RNAV (GPS) RWY 35

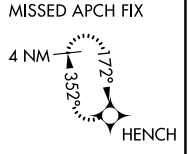
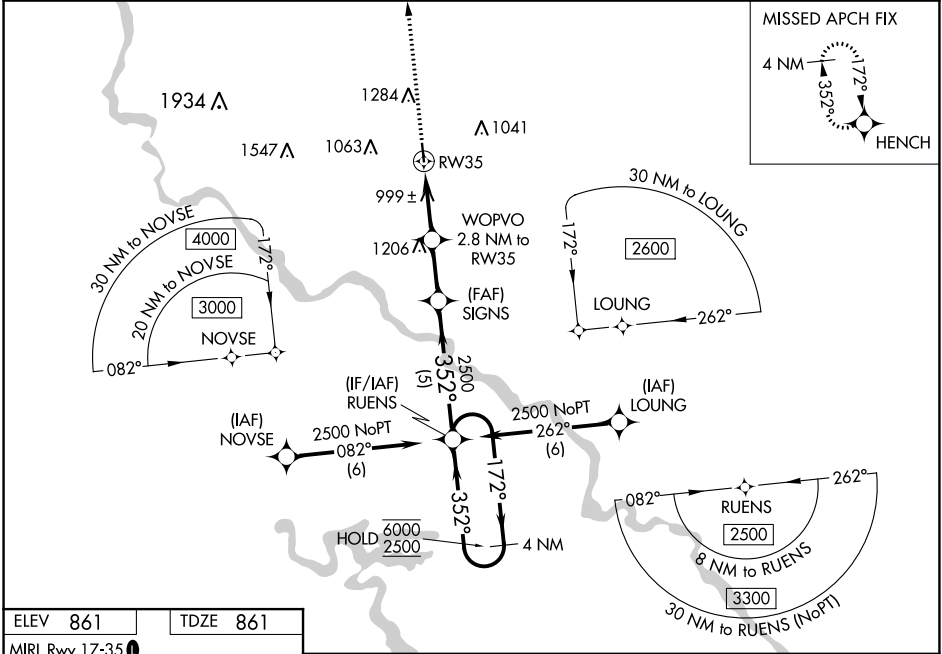
MARION (C17)

RNP APCH - GPS.

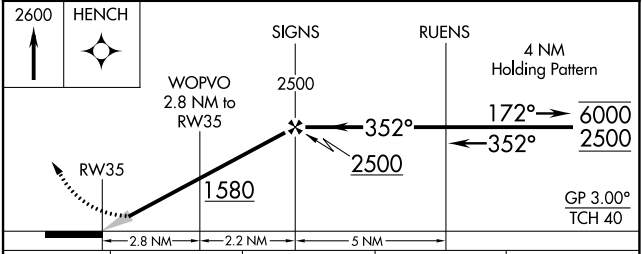
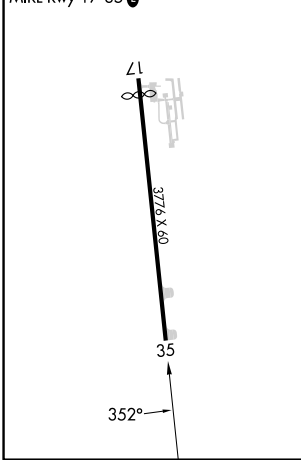
NA Baro-VNAV NA. Circling Rwy 17, NA at night. Circling NA for Cat B west of Rwy 17/35. Use The Eastern Iowa altimeter setting; when not received, use Monticello Rgnl altimeter setting; increase LPV DA to 1133; increase LNAV/VNAV DA to 1162; increase all MDAs 40 feet. For uncompensated Baro-VNAV system, LNAV/VNAV NA below -6°C or above 54°C.

MISSED APPROACH: Climb to 2600 direct HENCH and hold.

| | | |
|---------------------------|---|---------------------------------|
| CID ASOS 124.15 | CEDAR RAPIDS APP CON * 134.05 266.8 | UNICOM 122.7 (CTAF) 0 |
|---------------------------|---|---------------------------------|



| | |
|----------|----------|
| ELEV 861 | TDZE 861 |
|----------|----------|



| CATEGORY | A | B | C | D |
|--------------|-----------------------|-----------------------|---|----|
| LPV DA | 1111-1 | 250 (300-1) | | NA |
| LNAV/VNAV DA | 1140-1 | 279 (300-1) | | NA |
| LNAV MDA | 1280-1 | 419 (500-1) | | NA |
| CIRCLING | 1280-1 419 (500-1) | 1340-1 479 (500-1) | | NA |

NC-3, 30 NOV 2023 to 28 DEC 2023

NC-3, 30 NOV 2023 to 28 DEC 2023