

WAAS CH <b>82132</b> <b>W17A</b>	APP CRS <b>172°</b>	Rwy Idg TDZE Apt Elev	<b>5800</b> <b>1234</b> <b>1234</b>
--	------------------------	-----------------------------	---

# RNAV (GPS) RWY 17

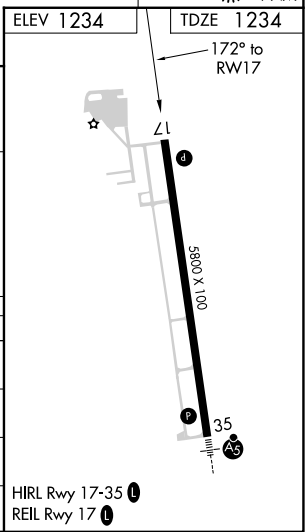
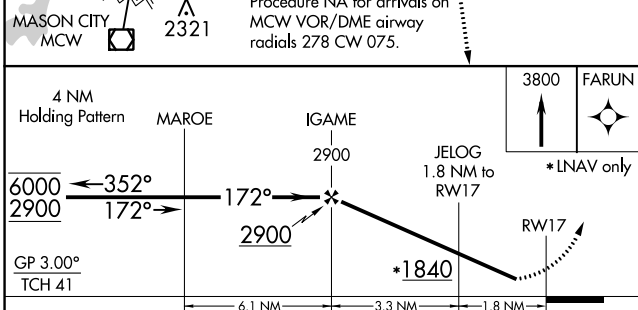
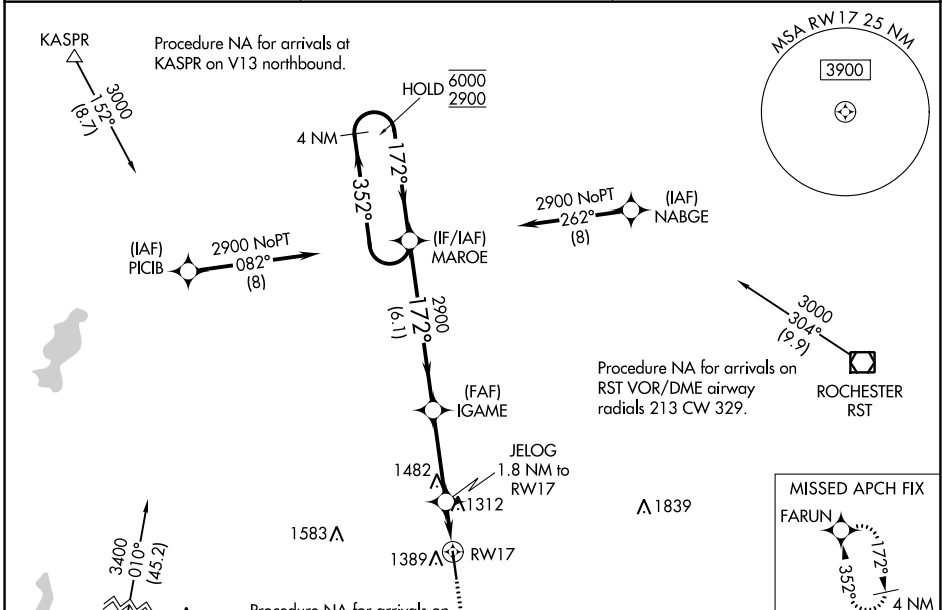
AUSTIN MUNI (AUM)

RNP APCH.

**▼**  
**▲** Rwy 17 helicopter visibility reduction below 3/4 SM NA.  
For uncompensated Baro-VNAV systems, LNAV/VNAV NA below -17°C or above 54°C.

MISSED APPROACH:  
Climb to 3800 direct FARUN and hold.

AWOS-3 <b>119.025</b>	ROCHESTER APP CON* <b>119.8 251.125</b>	UNICOM <b>122.7</b> (CTAF) <b>📴</b>
--------------------------	--	--



CATEGORY	A	B	C	D
LPV DA		1484-1	250 (300-1)	
LNAV/VNAV DA		1505-1	271 (300-1)	
LNAV MDA		1580-1	346 (400-1)	
<b>C</b> CIRCLING	1700-1	466 (500-1)	1800-1½ 566 (600-1½)	1880-2 646 (700-2)

NC-1, 22 FEB 2024 to 21 MAR 2024

NC-1, 22 FEB 2024 to 21 MAR 2024