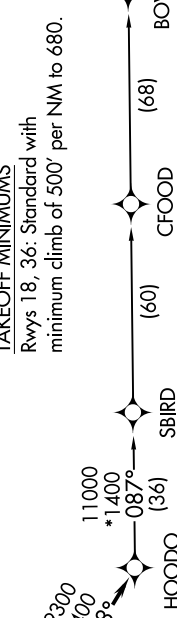
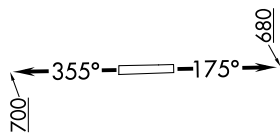


**TOP ALTITUDE:  
ASSIGNED BY ATC**

- NOTE: RNAV 1.
- NOTE: RADAR required.
- NOTE: ATC assigned only.
- NOTE: DME/DME/IRU or GPS required.
- NOTE: For non-GPS equipped aircraft, LCH, ILA, TBD, and LEV DME's must be operational.

ATIS 119.525  
CLNC DEL 132.075  
GND CON 132.075  
EXECUTIVE TOWER \* 122.975 (CTAF)  
HOUSTON DEP CON 123.8 257.7



**TAKEOFF MINIMUMS**  
Rwys 18, 36: Standard with minimum climb of 500' per NM to 680.

NOTE: Chart not to scale.

**DEPARTURE ROUTE DESCRIPTION**

**TAKEOFF RUNWAY 18:** Climb on heading 175° to 680, for RADAR vectors to VUH VOR/DME, thence . . . .  
**TAKEOFF RUNWAY 36:** Climb on heading 355° to 700, for RADAR vectors to VUH VOR/DME, thence . . . .

. . . . on track 118° to HOODO, then on (transition). Maintain ATC assigned altitude.  
Expect filed altitude 10 minutes after departure.

- BOWFN TRANSITION (HOODO7.BOWFN)
- CFOOD TRANSITION (HOODO7.CFOOD)
- HARVEY TRANSITION (HOODO7.HRV)
- LEEVILLE TRANSITION (HOODO7.LEV)
- SBIRD TRANSITION (HOODO7.SBIRD)